



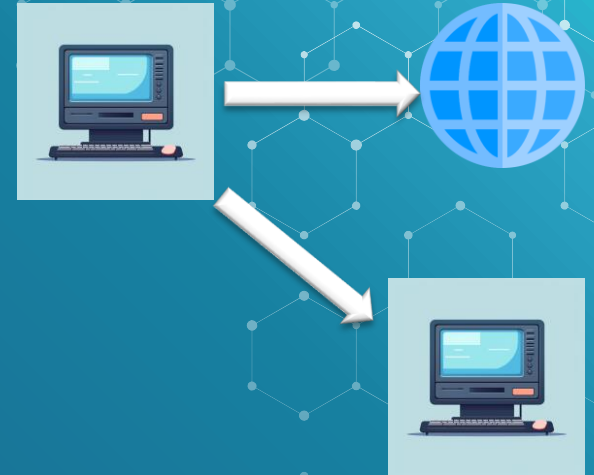
Routes

<https://t.me/learningnets>



Routes

- ◆ Routes define paths for outbound traffic
- ◆ For example, how to manage the output of a virtual machine to the internet or other destinations
- ◆ They fall into two categories:
 - ◇ Generated by the system
 - ◇ Custom.





Routes

- ◆ In a VPC network, a route consists of a single destination prefix in CIDR format and a next hop.
- ◆ When a packet is sent, Google Cloud delivers the packet to the next hop in the route if the packet's destination address is within the route's destination range.

Routes

- ◆ Each VPC is created with 2 specific paths
 - ◇ The default route defines a path for traffic leaving the VPC network. Allows VMs to access the Internet.
 - ◇ A subnet route for each of the IP ranges associated with a subnet. Subnet routes define routes for traffic to reach VMs used by subnets