

Call Control Discovery over Service Advertisement Framework (CCD/SAF)

« Automated Alternate Routing (AAR) (</workbook/view/ccie-collaboration/task/automated-alternate-routing-aar-MzA1NQ%3D%3D>)
| Call Control Discovery over Service Advertisement Framework (CCD/SAF) - BLOCKING (</workbook/view/ccie-collaboration/task/call-control-discovery-over-service-advertisement-framework-ccd-saf-blocking-MzA1Nw%3D%3D>) »

Last updated: November 13, 2017

CONTENTS >

Task

- Dynamically propagate 4 digit DNs which start from 20XX and 30XX along with their alternate PSTN aliases between HQ and SB clusters respectively.
- Use R1 as your SAF Forwarder between clusters. Do not delete your previous "XXXX" route pattern which was used in the earlier task with CUBE.

Configuration: [Click to collapse](#)

R1

```
service-routing xcmp listen ipv4 port 5050  
client username admin password ccie21282
```

Publisher – HQ

Advance Features > SAF Security Profile

SAF Security Profile Configuration

Save

Status

Status: Ready

SAF Security Profile Info

Name* R1

Description

User Name* admin

User Password*

Save

SAF Forwarder Configuration

Save

Status
i Status: Ready

SAF Forwarder Info

Name*

Description

Client Label*

SAF Security Profile*

SAF Forwarder Address*

SAF Forwarder Port*

Enable TCP Keep Alive

[Hide Advanced](#)

SAF Reconnect Interval*

SAF Notifications Window Size*

SAF Reconnect Interval*

SAF Notifications Window Size*

Available Cisco Unified Communications Managers

Selected Cisco Unified Communications Managers

- CM_11.100.64.12
- CM_clus1-ucm-pub

Save

Call Routing > Call Control Discovery > Hosted DN Group

Hosted DN Group Configuration

Save

Status
i Status: Ready

Hosted DN Group Info

Name*

Description

PSTN Failover Strip Digits

PSTN Failover Prepend Digits

Use HostedDN as PSTN Failover

Save

Call Routing > Call Control Discovery > Hosted DN Pattern

Hosted DN Pattern Configuration

Save
 Delete
 Copy
 Add New

Status

Status: Ready

Hosted DN Pattern Info

Hosted Pattern*

Description

Hosted DN Group*

PSTN Failover Strip Digits

PSTN Failover Prepend Digits

Use HostedDN as PSTN Failover

*- indicates required item.

Device > Trunk > Add New

Trunk Configuration

Next

Status

Status: Ready

Trunk Information

Trunk Type*

Device Protocol*

Trunk Service Type*

Trunk Configuration

Save

Status: Ready

Device Information

Product:	SIP Trunk
Device Protocol:	SIP
Trunk Service Type	Call Control Discovery
Device Name*	<input type="text" value="hq-ccd"/>

PSTN Access

Inbound Calls

Significant Digits*

SIP Information

MTP Preferred Originating Codec*

BLF Presence Group*

SIP Trunk Security Profile*

Rerouting Calling Search Space

Out-Of-Dialog Refer Calling Search Space

SUBSCRIBE Calling Search Space

SIP Profile*

DTMF Signaling Method*

Call Routing > Call Control Discovery > Advertising Service

CCD Advertising Service Configuration

Save
 Delete
 Copy
 Reset
 Add New

Status

Add successful

CCD Advertising Service Info

Name*

Description

SAF SIP Trunk

SAF H323 Trunk

HostedDN Group*

Activated Feature

```

R1# sh service-routing xmcp clients
Service-Routing XMCP Clients
Codes: A - Authenticated, T - TCP

  Handle   Address                Port  Keepalive
AT 2      11.100.64.11           48023 29/30
Client name: UCM/CM_clus1-ucm-pub/NodeId=1/9.1.1.20000-5
AT 3      11.100.64.12           60373 15/30
Client name: UCM/CM_11.100.64.12/NodeId=2/9.1.1.20000-5
R1#
    
```

Call Routing > Call Control Discovery > Requesting Service

CCD Requesting Service Configuration

Save

Status

Status: Ready

CCD Requesting Service Info

Name*

Description

Route Partition

Learned Pattern Prefix

PSTN Prefix

Available SAF Trunks

Selected SAF Trunks

Activated Feature

Save

Site B – HQ

Advance Features > SAF Security Profile

SAF Security Profile Configuration

Save

Status

Status: Ready

SAF Security Profile Info

Name*

Description

User Name*

User Password*

Save

Advance Features > SAF Forwarder Configuration

SAF Forwarder Configuration

Save

Status
i Status: Ready

SAF Forwarder Info

Name*

Description

Client Label*

SAF Security Profile*

SAF Forwarder Address*

SAF Forwarder Port*

Enable TCP Keep Alive

[Hide Advanced](#)

SAF Reconnect Interval*

SAF Notifications Window Size*

SAF Reconnect Interval*

SAF Notifications Window Size*

Available Cisco Unified Communications Managers

Selected Cisco Unified Communications Managers

Save

Device > Trunk > Add New

Trunk Configuration

Next

Status
i Status: Ready

Trunk Information

Trunk Type*

Device Protocol*

Trunk Service Type*

Next

Trunk Configuration

Save

Status
i Status: Ready

Device Information

Product:	SIP Trunk
Device Protocol:	SIP
Trunk Service Type	Call Control Discovery
Device Name*	<input type="text" value="sb-ccd"/>

PSTN Access

Inbound Calls

Significant Digits*

SIP Information

MTP Preferred Originating Codec*

BLF Presence Group*

SIP Trunk Security Profile*

Rerouting Calling Search Space

Out-Of-Dialog Refer Calling Search Space

SUBSCRIBE Calling Search Space

SIP Profile*

DTMF Signaling Method*

Call Routing > Call Control Discovery > Hosted DN Group

Hosted DN Group Configuration

Save Delete Copy Add New

Status

Add successful

Hosted DN Group Info

Name*

Description

PSTN Failover Strip Digits

PSTN Failover Prepend Digits

Use HostedDN as PSTN Failover

Call Routing > Call Control Discovery > Hosted DN Pattern

Hosted DN Pattern Configuration

Save Delete Copy Add New

Status

Status: Ready

Hosted DN Pattern Info

Hosted Pattern*

Description

Hosted DN Group*

PSTN Failover Strip Digits

PSTN Failover Prepend Digits

Use HostedDN as PSTN Failover

*- indicates required item.

Call Routing > Call Control Discovery > Advertising Service

CCD Advertising Service Configuration

Save

Status
i Status: Ready

CCD Advertising Service Info

Name*

Description

SAF SIP Trunk

SAF H323 Trunk

HostedDN Group*

Activated Feature

Save

```
R1# sh service-routing xmcp clients
```

Codes: A - Authenticated, T - TCP

Handle	Address	Port	Keepalive
AT 2	*11.100.64.11	48023	24/30
Client name: UCM/CM_clus1-ucm-pub/NodeId=1/9.1.1.20000-5			

Call Routing > Call Control Discovery > Requesting Service

CCD Requesting Service Configuration

Save Delete Reset

Status
i Add successful

CCD Requesting Service Info

Name*

Description

Route Partition

Learned Pattern Prefix

PSTN Prefix

Available SAF Trunks

v ^

Selected SAF Trunks

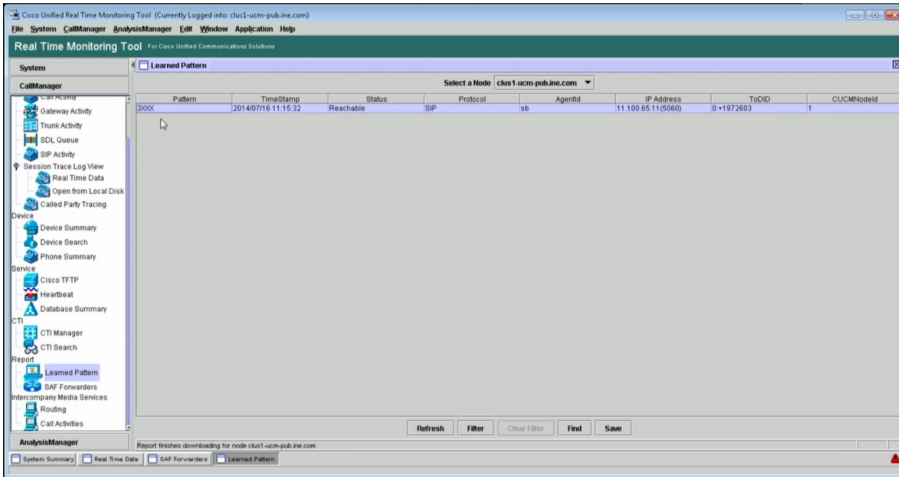
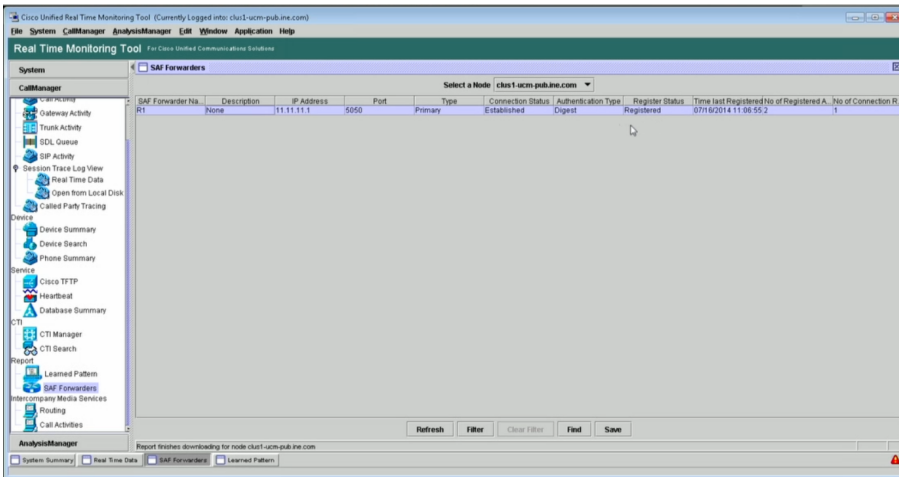
Activated Feature

Save Delete Reset

Verification

Make a call from HQ Phones to 3XXX.

Make a call from Site B Phones to HQ Phones 2XXX.



« Automated Alternate Routing (AAR) (/workbook/view/ccie-collaboration/task/automated-alternate-routing-aar-MzA1NQ%3D%3D) | Call Control Discovery over Service Advertisement Framework (CCD/SAF) - BLOCKING (/workbook/view/ccie-collaboration/task/call-control-discovery-over-service-advertisement-framework-ccd-saf-blocking-MzA1Nw%3D%3D) »