

Extension Mobility Cross Cluster

« Extension Mobility (/workbook/view/ccie-collaboration/task/extension-mobility-MzA1Mg%3D%3D) | Enhanced Location Call Admission Control using RSVP (/workbook/view/ccie-collaboration/task/enhanced-location-call-admission-control-using-rsvp-MzA1NA%3D%3D) »

Last updated: November 10, 2017

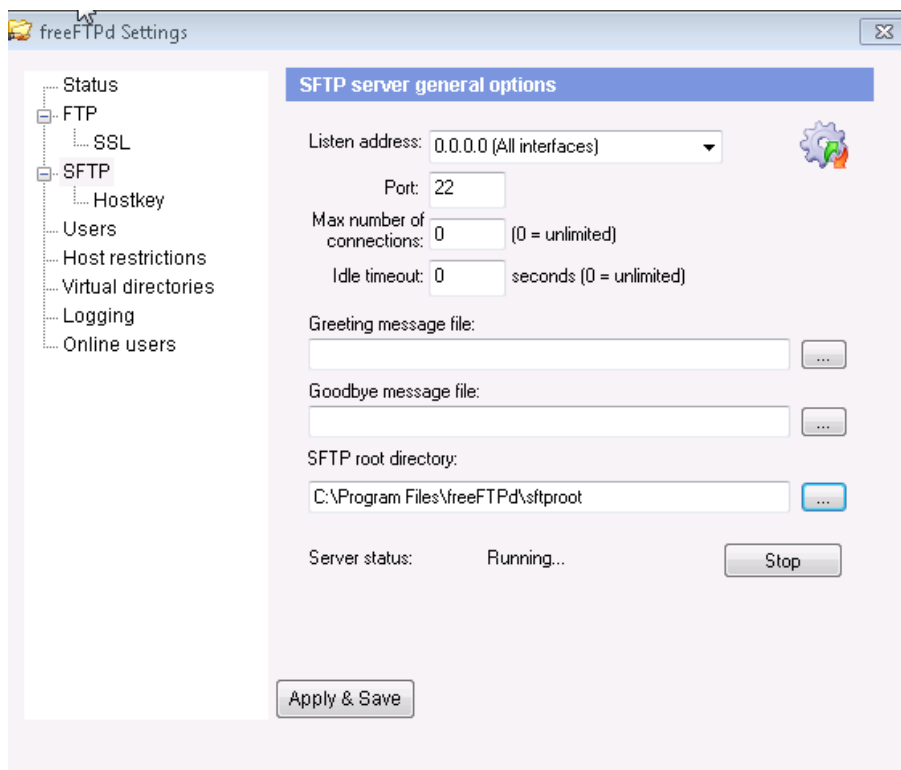
Tasks

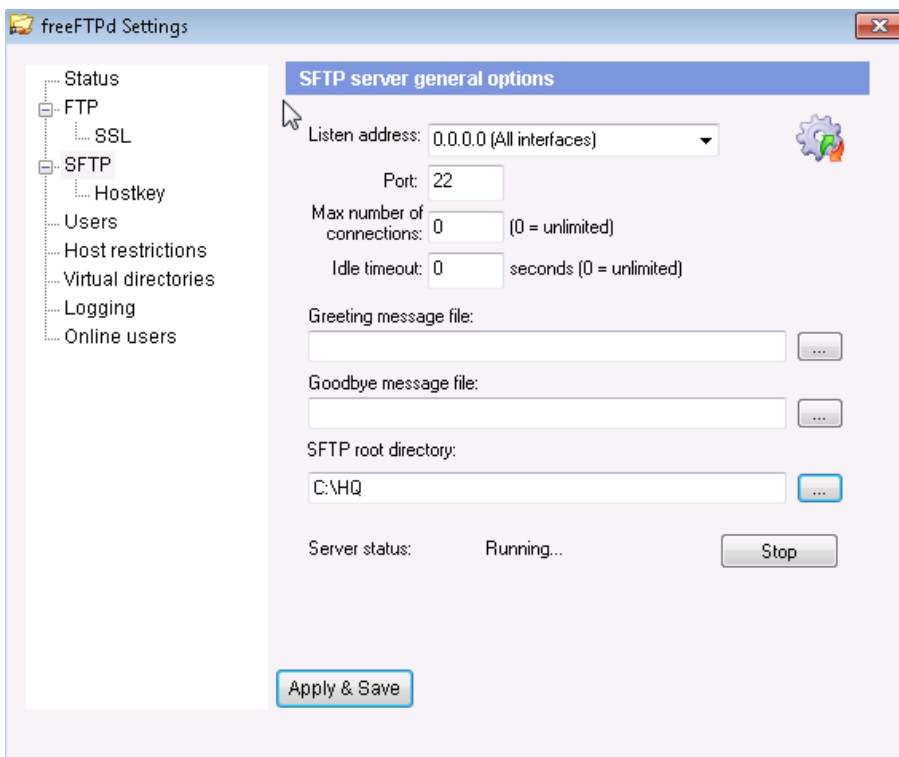
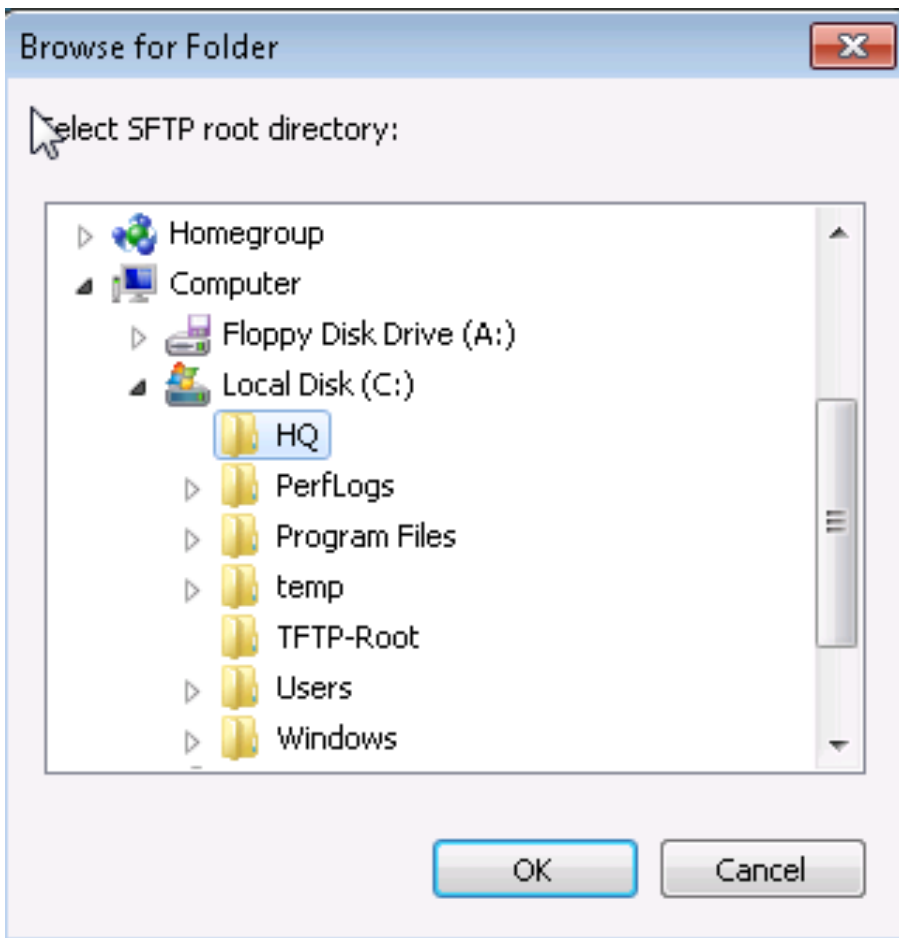
- User **hqthree** and **sitebtwo** should be able to login to all Site B Phones and HQ phones respectively.
- Test by logging on Site B Phone 1 using the username **hqthree** and by logging on HQ Phone 1 using the username **sitebtwo**.
- Ensure that users can make outbound calls.

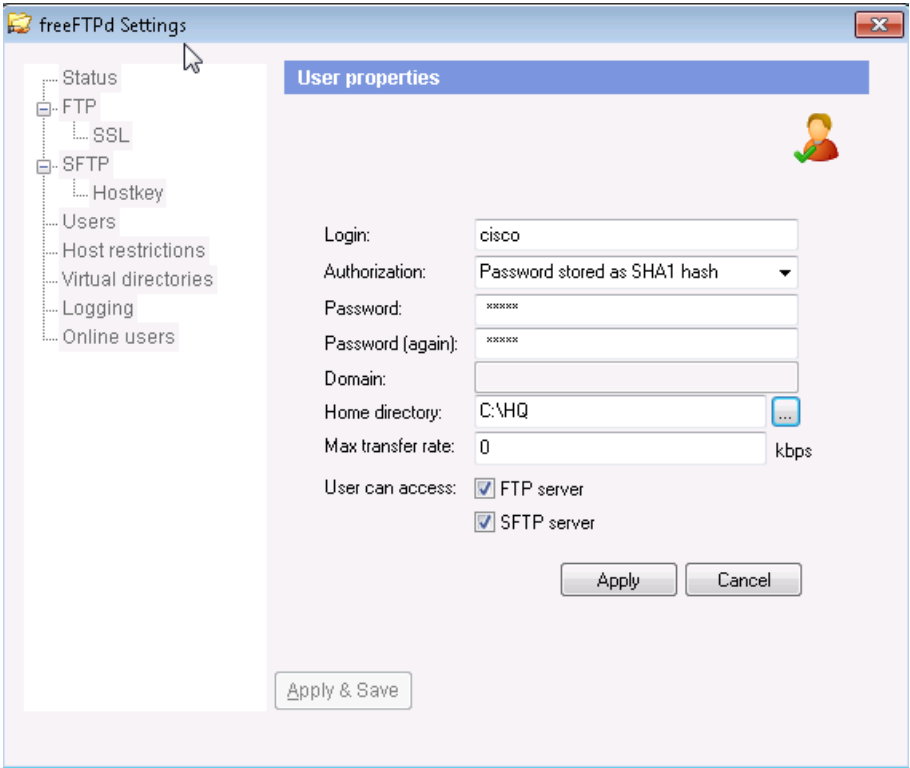
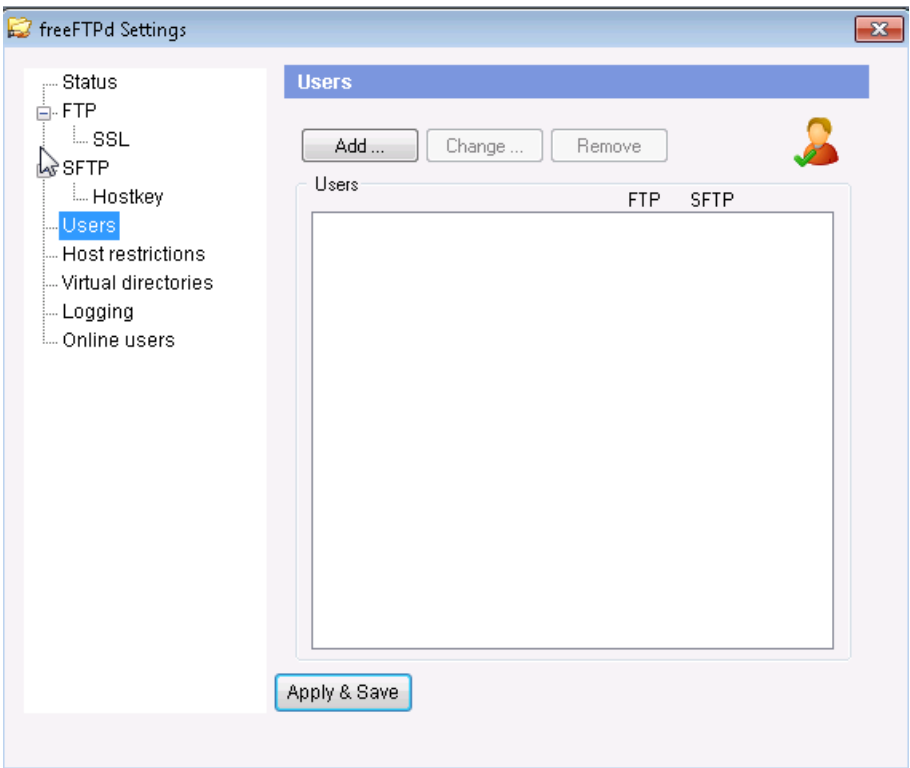
Configuration: [Click to collapse](#)

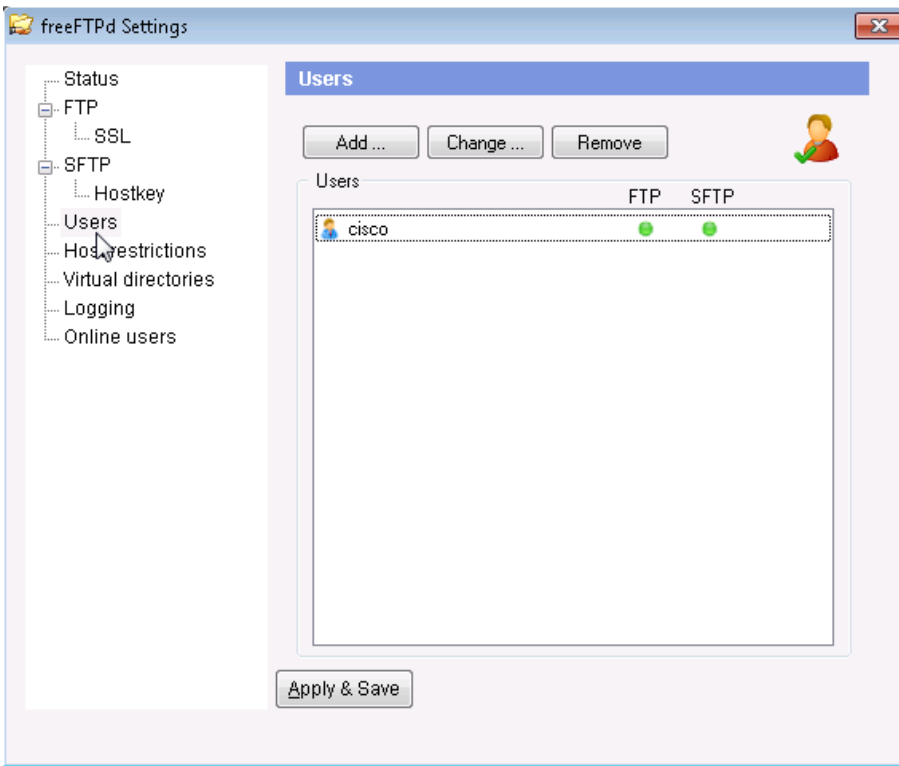
Before You Begin

- Make sure you have configured Extension Mobility for Intra Cluster.
- Install the free sftp server and set it up for ssh service.



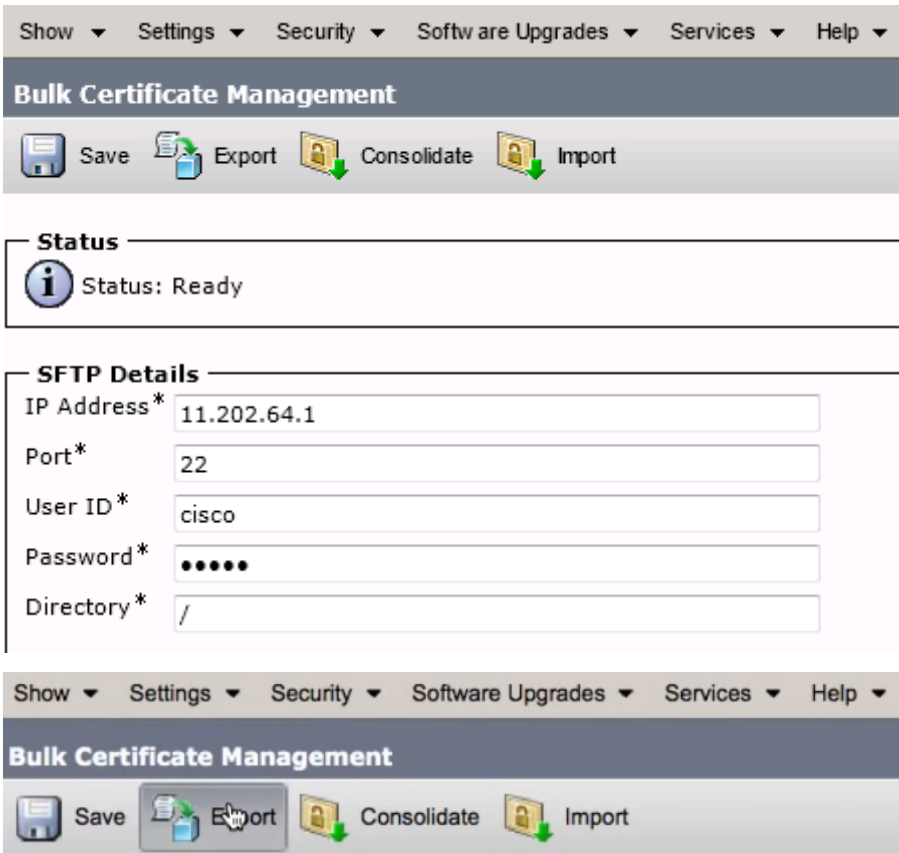






HQ Publisher

Navigation to Cisco OS Administration
 Security > Bulk Certification Management



Bulk Certificate Export

Export Close

Status

i Status: Ready

Export Certificate Type

Certificate Type* All

Export Close

i *- indicates required item.

Site B Publisher

Navigation to Cisco OS Administration
 Security > Bulk Certification Management

Show Settings Security Software Upgrades Services Help

Bulk Certificate Management

Save Export Consolidate Import

Status

i Status: Ready

SFTP Details

IP Address* 11.202.64.1

Port* 22

User ID* cisco

Password*

Directory* /

Show Settings Security Software Upgrades Services Help

Bulk Certificate Management

Save Export Consolidate Import

Bulk Certificate Export

Export Close

Status

Status: Ready

Export Certificate Type

Certificate Type* All

Export Close

*- indicates required item.

Show Settings Security Software Upgrades Services Help

Bulk Certificate Management

Save Export Consolidate Import

Bulk Certificate Consolidate

Consolidate Close

Status

Status: Ready

Consolidate Certificate Type

Certificate Type* Capf

- Capf
- Tomcat
- Tftp
- All

Consolidate

*- indicates required item.

Bulk Certificate Consolidate

Consolidate Close

Status

Status: Ready

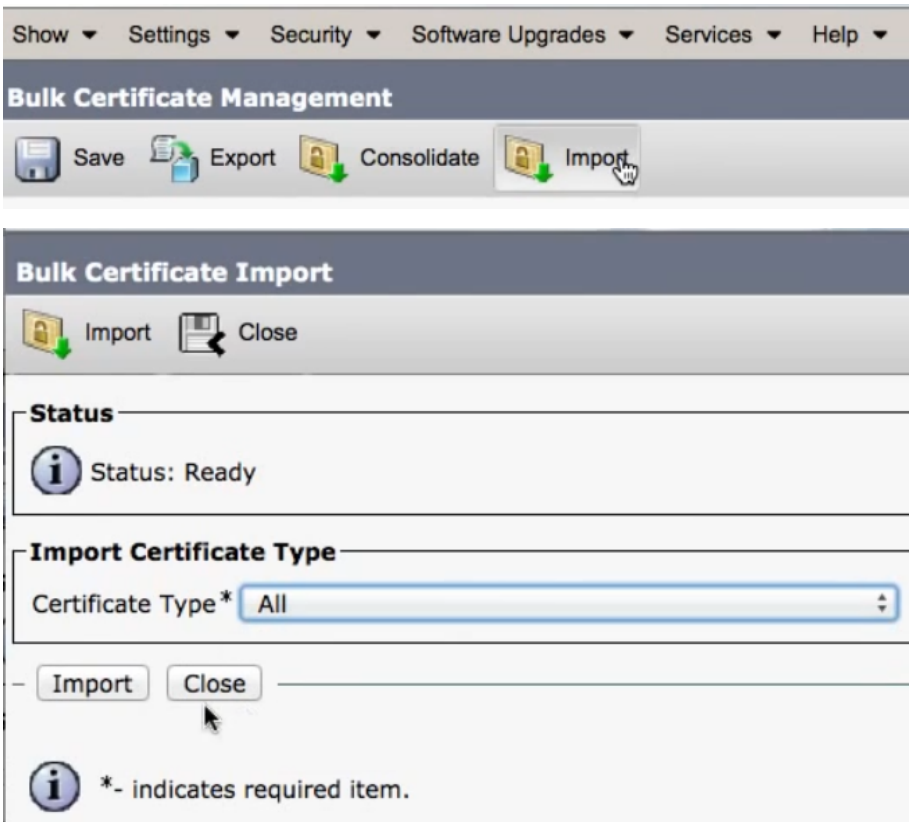
Consolidate Certificate Type

Certificate Type* All

Consolidate Close

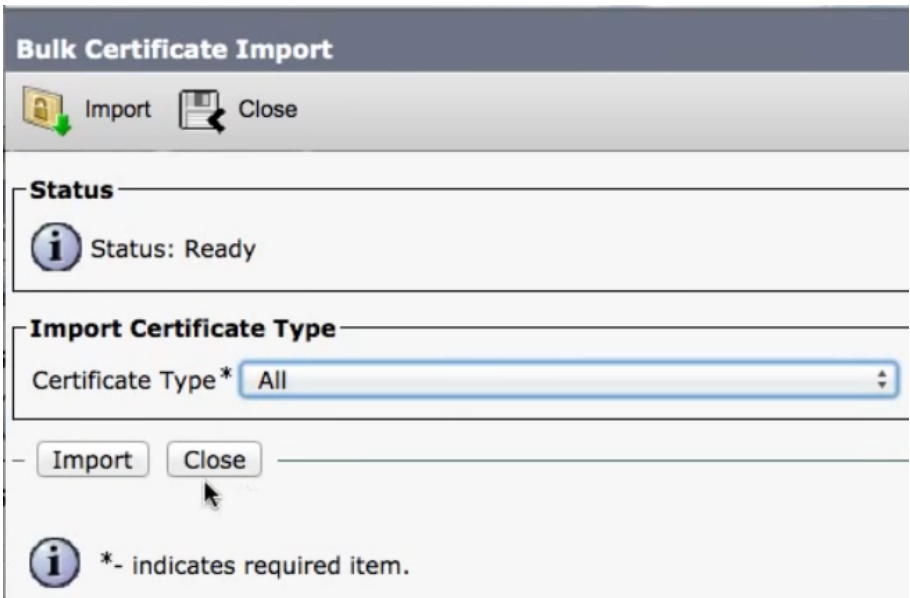
Loading, please wait.

*- indicates required item.



HQ Publisher

Navigation to Cisco OS Administration
 Security > Bulk Certification Management



Device > Device Settings > Phone Services (Modify existing Extension Mobility URL as below at the end on both clusters)

IP Phone Services Configuration

Save Delete Update Subscriptions Add New

Status

Status: Ready

Service Information

Service Name*

ASCII Service Name*

Service Description

Service URL*

Site B Publisher

System > Enterprise Parameters

Enterprise Parameters Configuration

Save Set to Default Reset Apply Config

Status

Status: Ready

Enterprise Parameters Configuration

Parameter Name	Parameter Value
Cluster ID *	SB-Cluster

HQ Publisher

System > Enterprise Parameters

Enterprise Parameters Configuration

Save Set to Default Reset Apply Config

Status

Status: Ready

Enterprise Parameters Configuration

Parameter Name	Parameter Value
Cluster ID *	HQ-Cluster

ALL IN HQ

1. Create Geolocation Filter GEO-HQ-State with state enabled.
2. Create Geolocation Configuration GEO-HQ with State as California and GEO-SB with state as Texas.
3. Create Roaming Device Pool named DP-Roaming-SB and put it in GEO = GEO-SB and also put all your local phones and your local DP in GEO-HQ
4. Create EMCC Template with DP anything as its fallback.
5. Update EMCC Template
6. Update number of devices
7. SIP EMCC Trunk
8. EMCC Feature Configuration
9. Intercluster Service
10. Inside Device Profile for hqthree. Enable EMCC CSS and subscribe to Phone Service
11. End user hqthree enable Home cluster and EMCC
12. Cluster View (Do this steps after doing Site B steps)
13. Add CSS to the Trunk in Inbound (If you Want Trunk to be used instead of Device Profile CSS)

ALL IN SB

1. Create Geolocation Filter GEO-SB-State
2. Create Geolocation Configuration GEO-HQ with state as California and GEO-SB with state as Texas
3. Create Roaming Device Pool named DP-Roaming-HQ and put it in GEO = GEO-HQ and also put all your local phones and your local DP-Phones in GEO-SB
4. Create EMCC Template with DP anything as its fallback.

5. Update EMCC Template
6. Update number of devices
7. SIP EMCC Trunk
8. EMCC Feature Configuration
9. Intercluster Service
10. Inside Device Profile for sitebtwo. Enable EMCC CSS and subscribe to Phone Service
11. End user sitebtwo enable Home cluster and EMCC
12. Cluster View
13. Add CSS to the Trunk in Inbound

Notes:

Dialplan is always taken of HomeCluster. But call will always go from Visiting Cluster Gateway as the Visiting Cluster SIP Trunk has DP which points to local gateway via SLRG.

For CSS if we use the option "use trunk CSS" in EMCC Feature Configuration then it will see the CSS of the Home Cluster SIP Trunk.

For CSS if we use the option "use Phone Device CSS" in EMCC Feature Configuration then it will see the CSS of the Home Cluster Device Profile or Line inside that Device Profile.

You may give additional rights to the user by adding Adjunct CSS in the DP-Roaming created on the Home cluster.

Verification

On Site B Phone 1 login with user **hqthree** and password **cisco** and make 911 calls and check codec.

« [Extension Mobility \(/workbook/view/ccie-collaboration/task/extension-mobility-MzA1Mg%3D%3D\)](/workbook/view/ccie-collaboration/task/extension-mobility-MzA1Mg%3D%3D) | [Enhanced Location Call Admission Control using RSVP \(/workbook/view/ccie-collaboration/task/enhanced-location-call-admission-control-using-rsvp-MzA1NA%3D%3D\)](/workbook/view/ccie-collaboration/task/enhanced-location-call-admission-control-using-rsvp-MzA1NA%3D%3D) »