

CCIE Collaboration (<http://labs.ine.com/workbook/toc/ccie-collaboration>) » Cisco Unified Communications Manager

CUCM Features – Call Park & Directed Call Park

« Mobile Connect: Single Number Reach for Site B Phone1 & HQ Phone1 (</workbook/view/ccie-collaboration/task/mobile-connect-single-number-reach-for-site-b-phone1-hq-phone1-MzAzOQ%3D%3D>) | CUCM Features – Call Pickup (</workbook/view/ccie-collaboration/task/cucm-features-call-pickup-MzA0MQ%3D%3D>) »

Last updated: November 13, 2017

Tasks

- Configure HQ CUCM for Call Park with numbers 2400 and 2401 with redundancy on Subscriber and Publisher.
- Configure HQ CUCM for Directed Call Park on HQ Phone 1 on line 3. The Directed Call Park number is 2500.
- Use prefix code 5 to retrieve the directed park call from any HQ Phone

Configuration: [Click to collapse](#)

HQ – Publisher

Call Routing > Call Park

Add New (Select Subscriber Server **11.100.64.12**)

Call Park Configuration.	
Call Park Number/Range*	<input type="text" value="240[01]"/>
Description	<input type="text" value="Call Park for Subscriber"/>
Partition	<input type="text" value=" < None >"/>

Save.

Add New (Select Publisher Server **11.100.64.11**)

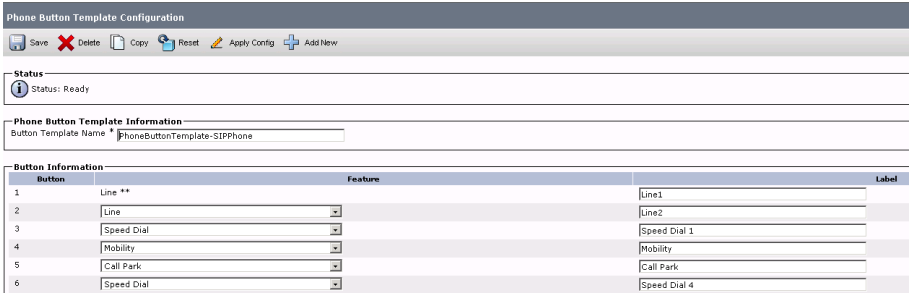
Call Park Configuration.	
Call Park Number/Range*	<input type="text" value="240[0-1]"/>
Description	<input type="text" value="Call Park for Publisher"/>
Partition	<input type="text" value=" < None >"/>

Save

Note:

For 9971 you will not be able to see the softkey for Park Feature.

Device > Device Settings > Phone Button Template

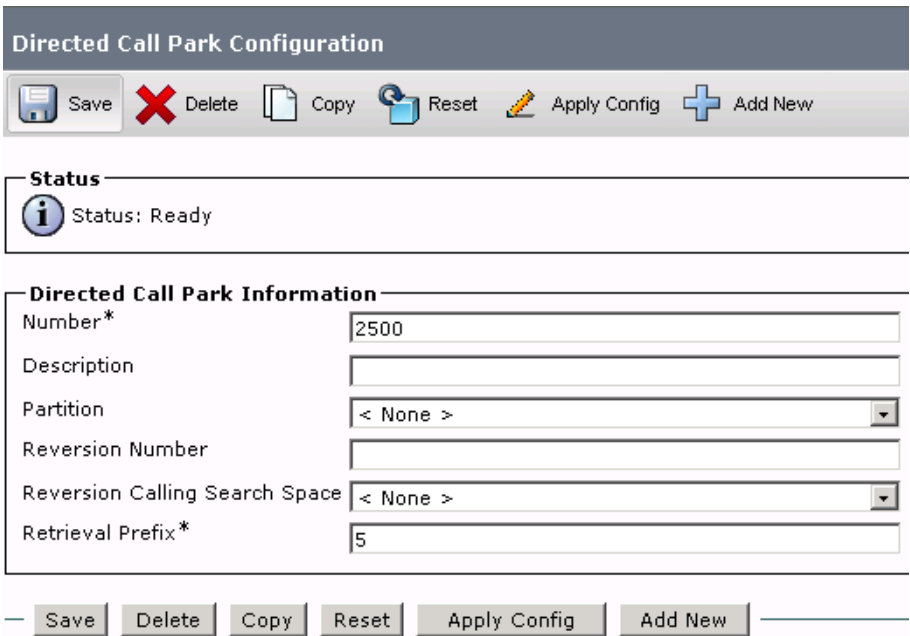


Verification

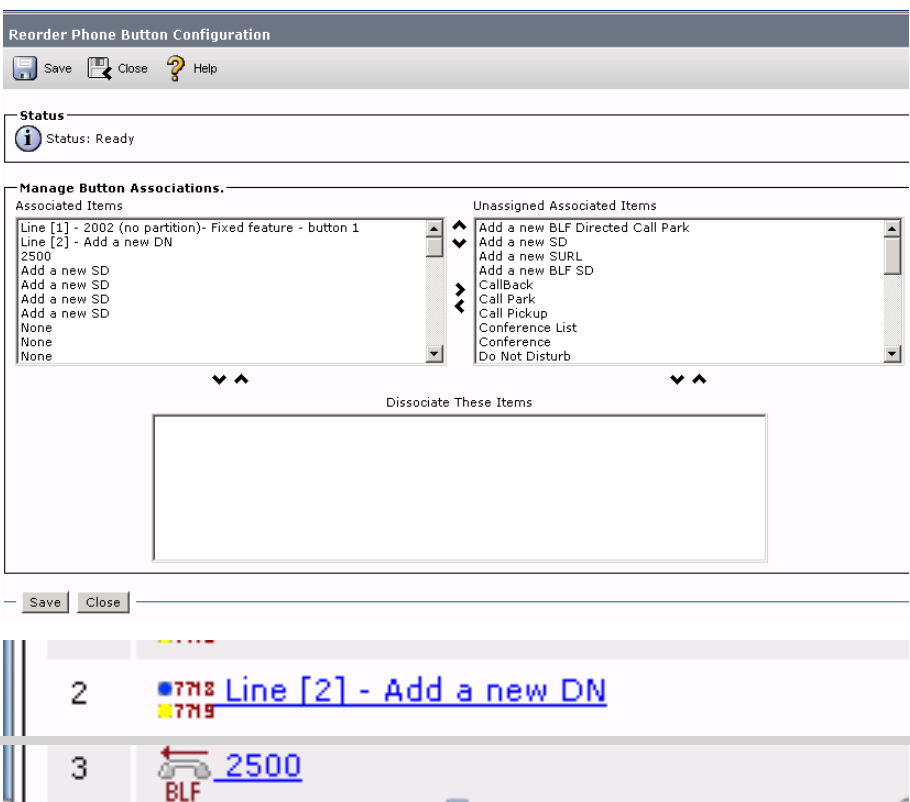
Call from PSTN Phone Line 1 to HQ Phone 1, pick up the call and select Park key. Note down the Call Park Number. Go to HQ Phone 2 and dial the Call Park Number to retrieve the call on HQ Phone 2.

HQ – Publisher

Call Routing > Directed Call Park



Device > Phone (Go to HQ Phone 1)



Verification

Place a call from PSTN Phone Line 1 to 5022001 and pick the call, press transfer click on the 3rd phone button for Directed Call Park and then press transfer.

Now go to HQ Phone 2 and Dial 52500.

« Mobile Connect: Single Number Reach for Site B Phone1 & HQ Phone1 (/workbook/view/ccie-collaboration/task/mobile-connect-single-number-reach-for-site-b-phone1-hq-phone1-MzAzOQ%3D%3D) | CUCM Features – Call Pickup (/workbook/view/ccie-collaboration/task/cucm-features-call-pickup-MzA0MQ%3D%3D) »