

## AZ-104.prepaway.premium.exam.57q

Number: AZ-104  
Passing Score: 800  
Time Limit: 120 min  
File Version: 1.0



**AZ-104**

**Microsoft Azure Administrator (beta)**

**Version 1.0**

### **Sections**

1. Manage Azure identities and governance
2. Implement and manage storage
3. Deploy and manage Azure compute resources
4. Configure and manage virtual networking
5. Monitor and back up Azure resources

**Exam A**

**QUESTION 1**

**Note:** This question is part of a series of questions that present the same scenario. Each question in the series contains a unique solution that might meet the stated goals. Some question sets might have more than one correct solution, while others might not have a correct solution.

**After you answer a question in this section, you will NOT be able to return to it. As a result, these questions will not appear in the review screen.**

You have an Azure subscription that contains the following users in an Azure Active Directory tenant named contoso.onmicrosoft.com:

<b>Name</b>	<b>Role</b>	<b>Scope</b>
User1	Global administrator	Azure Active Directory
User2	Global administrator	Azure Active Directory
User3	User administrator	Azure Active Directory
User4	Owner	Azure Subscription

User1 creates a new Azure Active Directory tenant named external.contoso.onmicrosoft.com.

You need to create new user accounts in external.contoso.onmicrosoft.com.

Solution: You instruct User2 to create the user accounts.

Does that meet the goal?

- A. Yes
- B. No

**Correct Answer:** A

**Section:** Manage Azure identities and governance

**Explanation**

**Explanation/Reference:**

Explanation:  
Only a global administrator can add users to this tenant.

Reference:

<https://docs.microsoft.com/en-us/azure/devops/organizations/accounts/add-users-to-azure-ad>

**QUESTION 2**

**Note:** This question is part of a series of questions that present the same scenario. Each question in the series contains a unique solution that might meet the stated goals. Some question sets might have more than one correct solution, while others might not have a correct solution.

**After you answer a question in this section, you will NOT be able to return to it. As a result, these questions will not appear in the review screen.**

You have an Azure subscription that contains the following users in an Azure Active Directory tenant named contoso.onmicrosoft.com:

Name	Role	Scope
User1	Global administrator	Azure Active Directory
User2	Global administrator	Azure Active Directory
User3	User administrator	Azure Active Directory
User4	Owner	Azure Subscription

User1 creates a new Azure Active Directory tenant named external.contoso.onmicrosoft.com.

You need to create new user accounts in external.contoso.onmicrosoft.com.

Solution: You instruct User4 to create the user accounts.

Does that meet the goal?

- A. Yes
- B. No

**Correct Answer: B**

**Section: Manage Azure identities and governance**

**Explanation**

**Explanation/Reference:**

Explanation:

Only a global administrator can add users to this tenant.

Reference:

<https://docs.microsoft.com/en-us/azure/devops/organizations/accounts/add-users-to-azure-ad>

### QUESTION 3

**Note: This question is part of a series of questions that present the same scenario. Each question in the series contains a unique solution that might meet the stated goals. Some question sets might have more than one correct solution, while others might not have a correct solution.**

**After you answer a question in this section, you will NOT be able to return to it. As a result, these questions will not appear in the review screen.**

You have an Azure subscription that contains the following users in an Azure Active Directory tenant named contoso.onmicrosoft.com:

Name	Role	Scope
User1	Global administrator	Azure Active Directory
User2	Global administrator	Azure Active Directory
User3	User administrator	Azure Active Directory
User4	Owner	Azure Subscription

User1 creates a new Azure Active Directory tenant named external.contoso.onmicrosoft.com.

You need to create new user accounts in external.contoso.onmicrosoft.com.

Solution: You instruct User3 to create the user accounts.

Does that meet the goal?

- A. Yes
- B. No

<https://vceoreteconvert.com/>

<https://t.me/learningnets>

**Correct Answer:** B

**Section:** Manage Azure identities and governance

**Explanation**

**Explanation/Reference:**

Explanation:

Only a global administrator can add users to this tenant.

Reference:

<https://docs.microsoft.com/en-us/azure/devops/organizations/accounts/add-users-to-azure-ad>

**QUESTION 4**

**HOTSPOT**

You have an Azure subscription named Subscription1 that contains a resource group named RG1.

In RG1, you create an internal load balancer named LB1 and a public load balancer named LB2.

You need to ensure that an administrator named Admin1 can manage LB1 and LB2. The solution must follow the principle of least privilege.

Which role should you assign to Admin1 for each task? To answer, select the appropriate options in the answer area.

**NOTE:** Each correct selection is worth one point.

**Hot Area:**

**Answer Area**

To add a backend pool to LB1:

	▼
Contributor on LB1	
Network Contributor on LB1	
Network Contributor on RG1	
Owner on LB1	

To add a health probe to LB2:

	▼
Contributor on LB2	
Network Contributor on LB2	
Network Contributor on RG1	
Owner on LB2	

**Correct Answer:**

## Answer Area

To add a backend pool to LB1:

	▼
Contributor on LB1	
Network Contributor on LB1	
Network Contributor on RG1	
Owner on LB1	

To add a health probe to LB2:

	▼
Contributor on LB2	
Network Contributor on LB2	
Network Contributor on RG1	
Owner on LB2	

**Section: Manage Azure identities and governance**  
**Explanation**

**Explanation/Reference:**  
Explanation:

The Network Contributor role lets you manage networks, but not access them.

Reference:

<https://docs.microsoft.com/en-us/azure/role-based-access-control/built-in-roles>

### QUESTION 5

You have an Azure subscription that contains an Azure Active Directory (Azure AD) tenant named contoso.com and an Azure Kubernetes Service (AKS) cluster named AKS1.

An administrator reports that she is unable to grant access to AKS1 to the users in contoso.com.

You need to ensure that access to AKS1 can be granted to the contoso.com users.

What should you do first?

- A. From contoso.com, modify the Organization relationships settings.
- B. From contoso.com, create an OAuth 2.0 authorization endpoint.
- C. Recreate AKS1.
- D. From AKS1, create a namespace.

**Correct Answer: B**

**Section: Manage Azure identities and governance**  
**Explanation**

**Explanation/Reference:**  
Reference:

<https://kubernetes.io/docs/reference/access-authn-authz/authentication/>

### QUESTION 6

You have a Microsoft 365 tenant and an Azure Active Directory (Azure AD) tenant named contoso.com.

You plan to grant three users named User1, User2, and User3 access to a temporary Microsoft SharePoint document library named Library1.

You need to create groups for the users. The solution must ensure that the groups are deleted automatically after 180 days.

<https://vceoreteconvert.com/>

<https://t.me/learningnets>

Which two groups should you create? Each correct answer presents a complete solution.

**NOTE:** Each correct selection is worth one point.

- A. an Office 365 group that uses the Assigned membership type
- B. a Security group that uses the Assigned membership type
- C. an Office 365 group that uses the Dynamic User membership type
- D. a Security group that uses the Dynamic User membership type
- E. a Security group that uses the Dynamic Device membership type

**Correct Answer:** AC

**Section:** Manage Azure identities and governance

**Explanation**

**Explanation/Reference:**

Explanation:

You can set expiration policy only for Office 365 groups in Azure Active Directory (Azure AD).

Note: With the increase in usage of Office 365 Groups, administrators and users need a way to clean up unused groups. Expiration policies can help remove inactive groups from the system and make things cleaner.

When a group expires, all of its associated services (the mailbox, Planner, SharePoint site, etc.) are also deleted.

You can set up a rule for dynamic membership on security groups or Office 365 groups.

Incorrect Answers:

B, D, E: You can set expiration policy only for Office 365 groups in Azure Active Directory (Azure AD).

Reference:

<https://docs.microsoft.com/en-us/office365/admin/create-groups/office-365-groups-expiration-policy?view=o365-worldwide>

## QUESTION 7

HOTSPOT

You have an Azure Active Directory (Azure AD) tenant named contoso.com that contains the users shown in the following table:

Name	Type	Member of
User1	Member	Group1
User2	Guest	Group1
User3	Member	None
UserA	Member	Group2
UserB	Guest	Group2

User3 is the owner of Group1.

Group2 is a member of Group1.

You configure an access review named Review1 as shown in the following exhibit:

<https://vceoreteconvert.com/>

<https://t.me/learningnets>

**Create an access review**

Access reviews enable reviewers to attest user's membership in a group or access to an application.

\* Review name

Description

\* Start date

Frequency

Duration (in days)

End

\* Number of times

\* End date

Users

Users to review

Scope  Guest users only  Everyone

---

\* Group

---

Reviewers

Reviewers

---

Programs

Link to program

For each of the following statements, select Yes if the statement is true. Otherwise, select No.

**NOTE:** Each correct selection is worth one point.

**Hot Area:**

**Answer Area**

Statements	Yes	No
User3 can perform an access review of User1	<input type="radio"/>	<input type="radio"/>
User3 can perform an access review of UserA	<input type="radio"/>	<input type="radio"/>
User3 can perform an access review of UserB	<input type="radio"/>	<input type="radio"/>

**Correct Answer:**

## Answer Area

Statements	Yes	No
User3 can perform an access review of User1	<input checked="" type="radio"/>	<input type="radio"/>
User3 can perform an access review of UserA	<input checked="" type="radio"/>	<input type="radio"/>
User3 can perform an access review of UserB	<input checked="" type="radio"/>	<input type="radio"/>

### Section: Manage Azure identities and governance

#### Explanation

#### Explanation/Reference:

Reference:

<https://docs.microsoft.com/en-us/azure/active-directory/governance/create-access-review>

### QUESTION 8

#### HOTSPOT

You have the Azure management groups shown in the following table:

Name	In management group
Tenant Root Group	<i>Not applicable</i>
ManagementGroup11	Tenant Root Group
ManagementGroup12	Tenant Root Group
ManagementGroup21	ManagementGroup11

You add Azure subscriptions to the management groups as shown in the following table:

Name	Management group
Subscription1	ManagementGroup21
Subscription2	ManagementGroup12

You create the Azure policies shown in the following table:

Name	Parameter	Scope
Not allowed resource types	virtualNetworks	Tenant Root Group
Allowed resource types	virtualNetworks	ManagementGroup12

For each of the following statements, select Yes if the statement is true. Otherwise, select No.

**NOTE:** Each correct selection is worth one point.

**Hot Area:**

<https://vceoreteconvert.com/>

<https://t.me/learningnets>

## Answer Area

Statements	Yes	No
You can create a virtual network in Subscription1.	<input type="radio"/>	<input type="radio"/>
You can create a virtual machine in Subscription2.	<input type="radio"/>	<input type="radio"/>
You can add Subscription1 to ManagementGroup11.	<input type="radio"/>	<input type="radio"/>

Correct Answer:

## Answer Area

Statements	Yes	No
You can create a virtual network in Subscription1.	<input type="radio"/>	<input checked="" type="radio"/>
You can create a virtual machine in Subscription2.	<input checked="" type="radio"/>	<input type="radio"/>
You can add Subscription1 to ManagementGroup11.	<input checked="" type="radio"/>	<input type="radio"/>

### Section: Manage Azure identities and governance

#### Explanation

#### Explanation/Reference:

Explanation:

Box 1: No

Virtual networks are not allowed at the root and is inherited. Deny overrides allowed.

Box 2: Yes

Virtual Machines can be created on a Management Group provided the user has the required RBAC permissions.

Box 3: Yes

Subscriptions can be moved between Management Groups provided the user has the required RBAC permissions.

Reference:

<https://docs.microsoft.com/en-us/azure/governance/management-groups/overview>

<https://docs.microsoft.com/en-us/azure/governance/management-groups/manage#moving-management-groups-and-subscriptions>

#### QUESTION 9

You have an Azure policy as shown in the following exhibit:

## SCOPE

\* Scope ([Learn more about setting the scope](#))

Subscription 1

## Exclusions

Subscription 1/ContosoRG1

## BASICS

\* Policy definition

Not allowed resource types

\* Assignment name

Not allowed resource types

## Assignment ID

/subscriptions/5eb8d0b6-ce3b-4ce0-a631-9f5321bedabb/providers/Microsoft.Authorization/policyAssignments/0e6fb866bf854f54accacae2a9

## Description

## Assigned by

admin1@contoso.com

## PARAMETERS

\* Not allowed resource types

Microsoft.Sql/servers

What is the effect of the policy?

- A. You are prevented from creating Azure SQL servers anywhere in Subscription 1.
- B. You can create Azure SQL servers in ContosoRG1 only.
- C. You are prevented from creating Azure SQL Servers in ContosoRG1 only.
- D. You can create Azure SQL servers in any resource group within Subscription 1.

**Correct Answer: B**

**Section: Manage Azure identities and governance**

**Explanation**

### Explanation/Reference:

Explanation:

You are prevented from creating Azure SQL servers anywhere in Subscription 1 with the exception of ContosoRG1

## QUESTION 10

HOTSPOT

You have an Azure subscription that contains the resources shown in the following table:

Name	Type	Resource group	Tag
RG6	Resource group	<i>Not applicable</i>	<i>None</i>
VNET1	Virtual network	RG6	Department: D1

You assign a policy to RG6 as shown in the following table:

<https://vceoreteconvert.com/>

<https://t.me/learningnets>

Section	Setting	Value
<b>Scope</b>	Scope	Subscription1/RG6
	Exclusions	<i>None</i>
<b>Basics</b>	Policy definition	Apply tag and its default value
	Assignment name	Apply tag and its default value
<b>Parameters</b>	Tag name	Label
	Tag value	Value1

To RG6, you apply the tag: RGroup: RG6.

You deploy a virtual network named VNET2 to RG6.

Which tags apply to VNET1 and VNET2? To answer, select the appropriate options in the answer area.

**NOTE:** Each correct selection is worth one point.

**Hot Area:**

### Answer Area

VNET1:  ▼

None
Department: D1 only
Department: D1, and RGroup: RG6 only
Department: D1, and Label: Value1 only
Department: D1, RGroup: RG6, and Label: Value1

VNET2:  ▼

None
RGroup: RG6 only
Label: Value1 only
RGroup: RG6, and Label: Value1

**Correct Answer:**

## Answer Area

VNET1:

	▼
None	
Department: D1 only	
Department: D1, and RGroup: RG6 only	
Department: D1, and Label: Value1 only	
Department: D1, RGroup: RG6, and Label: Value1	

VNET2:

	▼
None	
RGroup: RG6 only	
Label: Value1 only	
RGroup: RG6, and Label: Value1	

### Section: Manage Azure identities and governance

#### Explanation

#### Explanation/Reference:

Explanation:

VNET1: Department: D1, and Label:Value1 only.

Tags applied to the resource group or subscription are not inherited by the resources.

Note: Azure Policy allows you to use either built-in or custom-defined policy definitions and assign them to either a specific resource group or across a whole Azure subscription.

VNET2: Label:Value1 only.

Incorrect Answers:

RGROUP: RG6

Tags applied to the resource group or subscription are not inherited by the resources.

Reference:

<https://docs.microsoft.com/en-us/azure/azure-resource-manager/management/tag-policies>

### QUESTION 11

You have an Azure subscription named AZPT1 that contains the resources shown in the following table:

Name	Type
storage1	Azure Storage account
VNET1	Virtual network
VM1	Azure virtual machine
VM1Managed	Managed disk for VM1
RVAULT1	Recovery Services vault for the site recovery of VM1

You create a new Azure subscription named AZPT2.

You need to identify which resources can be moved to AZPT2.

Which resources should you identify?

A. VM1, storage1, VNET1, and VM1Managed only

<https://vceoreteconvert.com/>

<https://t.me/learningnets>

- B. VM1 and VM1Managed only
- C. VM1, storage1, VNET1, VM1Managed, and RVAULT1
- D. RVAULT1 only

**Correct Answer: C**

**Section: Manage Azure identities and governance**

**Explanation**

**Explanation/Reference:**

Explanation:

You can move a VM and its associated resources to a different subscription by using the Azure portal. You can now move an Azure Recovery Service (ASR) Vault to either a new resource group within the current subscription or to a new subscription.

Reference:

<https://docs.microsoft.com/en-us/azure/azure-resource-manager/management/move-resource-group-and-subscription>

<https://docs.microsoft.com/en-us/azure/key-vault/general/keyvault-move-subscription>

### QUESTION 12

You recently created a new Azure subscription that contains a user named Admin1.

Admin1 attempts to deploy an Azure Marketplace resource by using an Azure Resource Manager template. Admin1 deploys the template by using Azure PowerShell and receives the following error message: "User failed validation to purchase resources. Error message: "Legal terms have not been accepted for this item on this subscription. To accept legal terms, please go to the Azure portal (<http://go.microsoft.com/fwlink/?LinkId=534873>) and configure programmatic deployment for the Marketplace item or create it there for the first time."

You need to ensure that Admin1 can deploy the Marketplace resource successfully.

What should you do?

- A. From Azure PowerShell, run the `Set-AzApiManagementSubscription` cmdlet
- B. From the Azure portal, register the Microsoft.Marketplace resource provider
- C. From Azure PowerShell, run the `Set-AzMarketplaceTerms` cmdlet
- D. From the Azure portal, assign the Billing administrator role to Admin1

**Correct Answer: C**

**Section: Manage Azure identities and governance**

**Explanation**

**Explanation/Reference:**

Reference:

<https://docs.microsoft.com/en-us/powershell/module/az.marketplaceordering/set-azmarketplaceterms?view=azps-4.1.0>

### QUESTION 13

You have an Azure Active Directory (Azure AD) tenant that contains 5,000 user accounts.

You create a new user account named AdminUser1.

You need to assign the User administrator administrative role to AdminUser1.

What should you do from the user account properties?

- A. From the Licenses blade, assign a new license
- B. From the Directory role blade, modify the directory role
- C. From the Groups blade, invite the user account to a new group

<https://vceoreteconvert.com/>

<https://t.me/learningnets>

**Correct Answer:** B

**Section:** Manage Azure identities and governance

**Explanation**

**Explanation/Reference:**

Explanation:

Assign a role to a user

1. Sign in to the Azure portal with an account that's a global admin or privileged role admin for the directory.
2. Select Azure Active Directory, select Users, and then select a specific user from the list.
3. For the selected user, select Directory role, select Add role, and then pick the appropriate admin roles from the Directory roles list, such as Conditional access administrator.
4. Press Select to save.

Reference:

<https://docs.microsoft.com/en-us/azure/active-directory/fundamentals/active-directory-users-assign-role-azure-portal>

#### **QUESTION 14**

You have an Azure Active Directory (Azure AD) tenant named contoso.onmicrosoft.com that contains 100 user accounts.

You purchase 10 Azure AD Premium P2 licenses for the tenant.

You need to ensure that 10 users can use all the Azure AD Premium features.

What should you do?

- A. From the Licenses blade of Azure AD, assign a license
- B. From the Groups blade of each user, invite the users to a group
- C. From the Azure AD domain, add an enterprise application
- D. From the Directory role blade of each user, modify the directory role

**Correct Answer:** A

**Section:** Manage Azure identities and governance

**Explanation**

**Explanation/Reference:**

Reference:

<https://docs.microsoft.com/en-us/azure/active-directory/fundamentals/license-users-groups>

#### **QUESTION 15**

You have an Azure subscription named Subscription1 and an on-premises deployment of Microsoft System Center Service Manager.

Subscription1 contains a virtual machine named VM1.

You need to ensure that an alert is set in Service Manager when the amount of available memory on VM1 is below 10 percent.

What should you do first?

- A. Create an automation runbook
- B. Deploy a function app
- C. Deploy the IT Service Management Connector (ITSM)
- D. Create a notification

**Correct Answer:** C

**Section:** Manage Azure identities and governance

**Explanation**

**Explanation/Reference:**

<https://vceoreteconvert.com/>

<https://t.me/learningnets>

Explanation:

The IT Service Management Connector (ITSMC) allows you to connect Azure and a supported IT Service Management (ITSM) product/service, such as the Microsoft System Center Service Manager.

With ITSMC, you can create work items in ITSM tool, based on your Azure alerts (metric alerts, Activity Log alerts and Log Analytics alerts).

Reference:

<https://docs.microsoft.com/en-us/azure/azure-monitor/platform/itsmc-overview>

### QUESTION 16

#### HOTSPOT

You have an Azure subscription named Subscription1.

In Subscription1, you create an Azure file share named share1.

You create a shared access signature (SAS) named SAS1 as shown in the following exhibit:

Allowed services ⓘ

Blob  File  Queue  Table

Allowed resource types ⓘ

Service  Container  Object

Allowed permissions ⓘ

Read  Write  Delete  List  Add  Create  Update  Process

Start and expiry date/time ⓘ

Start

2018-09-01

2:00:00 PM

End

2018-09-14

2:00:00 PM

(UTC+02:00) --- Current Timezone ---

Allowed IP addresses ⓘ

193.77.134.10-193.77.134.50

Allowed protocols ⓘ

HTTPS only  HTTPS and HTTP

Signing key ⓘ

key1

**Generate SAS and connection string**

To answer, select the appropriate options in the answer area.

**NOTE:** Each correct selection is worth one point.

<https://vceoreteconvert.com/>

<https://t.me/learningnets>

**Hot Area:**

**Answer Area**

If on September 2, 2018, you run Microsoft Azure Storage Explorer on a computer that has an IP address of 193.77.134.1, and you use SAS1 to connect to the storage account, you [answer choice].

	▼
will be prompted for credentials	
will have no access	
will have read, write, and list access	
will have read-only access	

If on September 10, 2018, you run the net use command on a computer that has an IP address of 193.77.134.50, and you use SAS1 as the password to connect to share1, you [answer choice].

	▼
will be prompted for credentials	
will have no access	
will have read, write, and list access	
will have read-only access	

**Correct Answer:**

**Answer Area**

If on September 2, 2018, you run Microsoft Azure Storage Explorer on a computer that has an IP address of 193.77.134.1, and you use SAS1 to connect to the storage account, you [answer choice].

	▼
will be prompted for credentials	
will have no access	
will have read, write, and list access	
will have read-only access	

If on September 10, 2018, you run the net use command on a computer that has an IP address of 193.77.134.50, and you use SAS1 as the password to connect to share1, you [answer choice].

	▼
will be prompted for credentials	
will have no access	
will have read, write, and list access	
will have read-only access	

**Section: Implement and manage storage**  
**Explanation**

**Explanation/Reference:**  
Explanation:

Box 1: Will have no access  
The IP 193.77.134.1 does not have access on the SAS.

Box 2: Will have read, write, and list access  
The net use command is used to connect to file shares.

References:  
<https://docs.microsoft.com/en-us/azure/storage/common/storage-dotnet-shared-access-signature-part-1>  
<https://docs.microsoft.com/en-us/azure/vs-azure-tools-storage-manage-with-storage-explorer?tabs=windows>

**QUESTION 17**

You have an on-premises server that contains a folder named D:\Folder1.

You need to copy the contents of D:\Folder1 to the public container in an Azure Storage account named contosodata.

Which command should you run?

- A. `https://contosodata.blob.core.windows.net/public`
- B. `azcopy sync D:\folder1 https://contosodata.blob.core.windows.net/public --`

- snapshot
- C. `azcopy copy D:\folder1 https://contosodata.blob.core.windows.net/public --recursive`
- D. `az storage blob copy start-batch D:\Folder1 https://contosodata.blob.core.windows.net/public`

**Correct Answer: C**

**Section: Implement and manage storage**

**Explanation**

**Explanation/Reference:**

Explanation:

The `azcopy copy` command copies a directory (and all of the files in that directory) to a blob container. The result is a directory in the container by the same name.

Incorrect Answers:

B: The `azcopy sync` command replicates the source location to the destination location. However, the file is skipped if the last modified time in the destination is more recent.

D: The `az storage blob copy start-batch` command copies multiple blobs to a blob container.

Reference:

<https://docs.microsoft.com/en-us/azure/storage/common/storage-use-azcopy-blobs>

<https://docs.microsoft.com/en-us/azure/storage/common/storage-ref-azcopy-copy>

### QUESTION 18

You have an Azure subscription named Subscription1 that contains the storage accounts shown in the following table:

Name	Account kind	Azure service that contains data
storage1	Storage	File
storage2	StorageV2 (general purpose v2)	File, Table
storage3	StorageV2 (general purpose v2)	Queue
storage4	BlobStorage	Blob

You plan to use the Azure Import/Export service to export data from Subscription1.

You need to identify which storage account can be used to export the data.

What should you identify?

- A. storage1
- B. storage2
- C. storage3
- D. storage4

**Correct Answer: D**

**Section: Implement and manage storage**

**Explanation**

**Explanation/Reference:**

Explanation:

Azure Import/Export service supports the following of storage accounts:

- Standard General Purpose v2 storage accounts (recommended for most scenarios)
- Blob Storage accounts
- General Purpose v1 storage accounts (both Classic or Azure Resource Manager deployments),

Azure Import/Export service supports the following storage types:

- Import supports Azure Blob storage and Azure File storage

<https://vceoreteconvert.com/>

<https://t.me/learningnets>

- Export supports Azure Blob storage

Reference:

<https://docs.microsoft.com/en-us/azure/storage/common/storage-import-export-requirements>

**QUESTION 19**

**HOTSPOT**

You have Azure subscription that includes following Azure file shares:

Name	In storage account	Location
share1	storage1	West US
share2	storage1	West US

You have the following on-premises servers:

Name	Folders
Server1	D:\Folder1, E:\Folder2
Server2	D:\Data

You create a Storage Sync Service named Sync1 and an Azure File Sync group named Group1. Group1 uses share1 as a cloud endpoint.

You register Server1 and Server2 in Sync1. You add D:\Folder1 on Server1 as a server endpoint of Group1.

For each of the following statements, select Yes if the statement is true. Otherwise, select No.

**NOTE:** Each correct selection is worth one point.

**Hot Area:**

**Answer Area**

Statements	Yes	No
share2 can be added as a cloud endpoint for Group1	<input type="radio"/>	<input type="radio"/>
E:\Folder2 on Server1 can be added as a server endpoint for Group1	<input type="radio"/>	<input type="radio"/>
D:\Data on Server2 can be added as a server endpoint for Group1	<input type="radio"/>	<input type="radio"/>

**Correct Answer:**

## Answer Area

Statements	Yes	No
share2 can be added as a cloud endpoint for Group1	<input type="radio"/>	<input checked="" type="radio"/>
E:\Folder2 on Server1 can be added as a server endpoint for Group1	<input checked="" type="radio"/>	<input type="radio"/>
D:\Data on Server2 can be added as a server endpoint for Group1	<input checked="" type="radio"/>	<input type="radio"/>

### Section: Implement and manage storage

#### Explanation

#### Explanation/Reference:

Explanation:

Box 1: No

Group1 already has a cloud endpoint named Share1.

A sync group must contain one cloud endpoint, which represents an Azure file share and one or more server endpoints.

Box 2: Yes

Yes, one or more server endpoints can be added to the sync group.

Box 3: Yes

Yes, one or more server endpoints can be added to the sync group.

Reference:

<https://docs.microsoft.com/en-us/azure/storage/files/storage-sync-files-deployment-guide>

### QUESTION 20

#### DRAG DROP

You have an Azure subscription named Subscription1.

You create an Azure Storage account named contostorage, and then you create a file share named data.

Which UNC path should you include in a script that references files from the data file share? To answer, drag the appropriate values to the correct targets. Each value may be used once, more than once or not at all. You may need to drag the split bar between panes or scroll to view content.

**NOTE:** Each correct selection is worth one point.

#### Select and Place:

##### Values

blob	blob.core.windows.net
contostorage	data
file	file.core.windows.net
portal.azure.com	subscription1

##### Answer Area

\\  .  \

**Correct Answer:**

### Values

blob	blob.core.windows.net
contosostorage	data
file	file.core.windows.net
portal.azure.com	subscription1

### Answer Area

```
\\ contosostorage . file.core.windows.net \ data
```

## Section: Implement and manage storage

### Explanation

#### Explanation/Reference:

Explanation:

Box 1: contosostorage

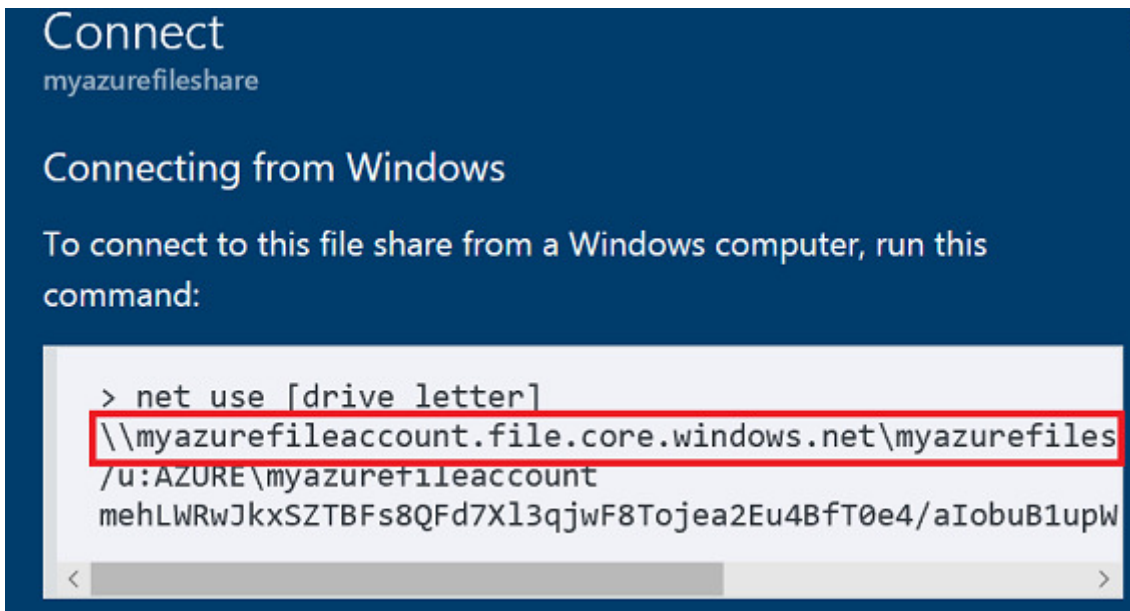
The name of account

Box 2: file.core.windows.net

Box 3: data

The name of the file share is data.

Example:



Reference:

<https://docs.microsoft.com/en-us/azure/storage/files/storage-how-to-use-files-windows>

### QUESTION 21

DRAG DROP

You have an on-premises file server named Server1 that runs Windows Server 2016.

You have an Azure subscription that contains an Azure file share.

You deploy an Azure File Sync Storage Sync Service, and you create a sync group.

You need to synchronize files from Server1 to Azure.

Which three actions should you perform in sequence? To answer, move the appropriate actions from the list of actions to the answer area and arrange them in the correct order.

<https://vceoreteconvert.com/>

<https://t.me/learningnets>

**Select and Place:**

**Actions**

**Answer Area**

Install the Azure File Sync agent on Server1

Create an Azure on-premises data gateway

Create a Recovery Services vault

Register Server1

Add a server endpoint

Install the DFS Replication server role on Server1



**Correct Answer:**

**Actions**

**Answer Area**

Install the Azure File Sync agent on Server1

Create an Azure on-premises data gateway

Create a Recovery Services vault

Register Server1

Add a server endpoint

Install the DFS Replication server role on Server1



**Section: Implement and manage storage**

**Explanation**

**Explanation/Reference:**

Explanation:

Step 1: Install the Azure File Sync agent on Server1

The Azure File Sync agent is a downloadable package that enables Windows Server to be synced with an Azure file share

Step 2: Register Server1.

Register Windows Server with Storage Sync Service

Registering your Windows Server with a Storage Sync Service establishes a trust relationship between your server (or cluster) and the Storage Sync Service.

Step 3: Add a server endpoint

Create a sync group and a cloud endpoint.

A sync group defines the sync topology for a set of files. Endpoints within a sync group are kept in sync with each other. A sync group must contain one cloud endpoint, which represents an Azure file share and one or

more server endpoints. A server endpoint represents a path on registered server.

Reference:

<https://docs.microsoft.com/en-us/azure/storage/files/storage-sync-files-deployment-guide>

**QUESTION 22**  
**HOTSPOT**

You plan to create an Azure Storage account in the Azure region of East US 2.

You need to create a storage account that meets the following requirements:

- Replicates synchronously.
- Remains available if a single data center in the region fails.

How should you configure the storage account? To answer, select the appropriate options in the answer area.

**NOTE:** Each correct selection is worth one point.

**Hot Area:**

**Answer Area**

Replication:	<table border="1"><tr><td></td><td>▼</td></tr><tr><td colspan="2">Geo-redundant storage (GRS)</td></tr><tr><td colspan="2">Locally-redundant storage (LRS)</td></tr><tr><td colspan="2">Read-access geo-redundant storage (RA GRS)</td></tr><tr><td colspan="2">Zone-redundant storage (ZRS)</td></tr></table>		▼	Geo-redundant storage (GRS)		Locally-redundant storage (LRS)		Read-access geo-redundant storage (RA GRS)		Zone-redundant storage (ZRS)	
	▼										
Geo-redundant storage (GRS)											
Locally-redundant storage (LRS)											
Read-access geo-redundant storage (RA GRS)											
Zone-redundant storage (ZRS)											
Account type:	<table border="1"><tr><td></td><td>▼</td></tr><tr><td colspan="2">Blob storage</td></tr><tr><td colspan="2">Storage (general purpose v1)</td></tr><tr><td colspan="2">StorageV2 (general purpose v2)</td></tr></table>		▼	Blob storage		Storage (general purpose v1)		StorageV2 (general purpose v2)			
	▼										
Blob storage											
Storage (general purpose v1)											
StorageV2 (general purpose v2)											

**Correct Answer:**

**Answer Area**

Replication:	<table border="1"><tr><td></td><td>▼</td></tr><tr><td colspan="2">Geo-redundant storage (GRS)</td></tr><tr><td colspan="2">Locally-redundant storage (LRS)</td></tr><tr><td colspan="2">Read-access geo-redundant storage (RA GRS)</td></tr><tr><td colspan="2">Zone-redundant storage (ZRS)</td></tr></table>		▼	Geo-redundant storage (GRS)		Locally-redundant storage (LRS)		Read-access geo-redundant storage (RA GRS)		Zone-redundant storage (ZRS)	
	▼										
Geo-redundant storage (GRS)											
Locally-redundant storage (LRS)											
Read-access geo-redundant storage (RA GRS)											
Zone-redundant storage (ZRS)											
Account type:	<table border="1"><tr><td></td><td>▼</td></tr><tr><td colspan="2">Blob storage</td></tr><tr><td colspan="2">Storage (general purpose v1)</td></tr><tr><td colspan="2">StorageV2 (general purpose v2)</td></tr></table>		▼	Blob storage		Storage (general purpose v1)		StorageV2 (general purpose v2)			
	▼										
Blob storage											
Storage (general purpose v1)											
StorageV2 (general purpose v2)											

**Section: Implement and manage storage**  
**Explanation**

**Explanation/Reference:**

Explanation:

<https://vceoreteconvert.com/>

<https://t.me/learningnets>

Box 1: Zone-redundant storage (ZRS)

Zone-redundant storage (ZRS) replicates your data synchronously across three storage clusters in a single region.

LRS would not remain available if a data center in the region fails  
GRS and RA GRS use asynchronous replication.

Box 2: StorageV2 (general purpose V2)  
ZRS only support GPv2.

Reference:

<https://docs.microsoft.com/en-us/azure/storage/common/storage-redundancy>

<https://docs.microsoft.com/en-us/azure/storage/common/storage-redundancy-zrs>

### QUESTION 23

You have an Azure Storage account named storage1.

You plan to use AzCopy to copy data to storage1.

You need to identify the storage services in storage1 to which you can copy the data.

What should you identify?

- A. blob, file, table, and queue
- B. blob and file only
- C. file and table only
- D. file only
- E. blob, table, and queue only

**Correct Answer:** B

**Section:** Implement and manage storage

**Explanation**

**Explanation/Reference:**

Explanation:

AzCopy is a command-line utility that you can use to copy blobs or files to or from a storage account.

Incorrect Answers:

A, C, E: AzCopy does not support table and queue storage services.

D: AzCopy supports file storage services, as well as blob storage services.

Reference:

<https://docs.microsoft.com/en-us/azure/storage/common/storage-use-azcopy-v10>

### QUESTION 24

HOTSPOT

You have an Azure Storage account named storage1 that uses Azure Blob storage and Azure File storage.

You need to use AzCopy to copy data to the blob storage and file storage in storage1.

Which authentication method should you use for each type of storage? To answer, select the appropriate options in the answer area.

**NOTE:** Each correct selection is worth one point.

**Hot Area:**

## Answer Area

Blob storage:

Azure Active Directory (Azure AD) only
Shared access signatures (SAS) only
Access keys and shared access signatures (SAS) only
Azure Active Directory (Azure AD) and shared access signatures (SAS) only
Azure Active Directory (Azure AD), access keys, and shared access signatures (SAS)

File storage:

Azure Active Directory (Azure AD) only
Shared access signatures (SAS) only
Access keys and shared access signatures (SAS) only
Azure Active Directory (Azure AD) and shared access signatures (SAS) only
Azure Active Directory (Azure AD), access keys, and shared access signatures (SAS)

## Correct Answer: Answer Area

Blob storage:

Azure Active Directory (Azure AD) only
Shared access signatures (SAS) only
Access keys and shared access signatures (SAS) only
Azure Active Directory (Azure AD) and shared access signatures (SAS) only
Azure Active Directory (Azure AD), access keys, and shared access signatures (SAS)

File storage:

Azure Active Directory (Azure AD) only
Shared access signatures (SAS) only
Access keys and shared access signatures (SAS) only
Azure Active Directory (Azure AD) and shared access signatures (SAS) only
Azure Active Directory (Azure AD), access keys, and shared access signatures (SAS)

## Section: Implement and manage storage Explanation

### Explanation/Reference:

Explanation:

You can provide authorization credentials by using Azure Active Directory (AD), or by using a Shared Access Signature (SAS) token.

Box 1:

Both Azure Active Directory (AD) and Shared Access Signature (SAS) token are supported for Blob storage.

Box 2:

Only Shared Access Signature (SAS) token is supported for File storage.

Reference:

<https://docs.microsoft.com/en-us/azure/storage/common/storage-use-azcopy-v10>

### QUESTION 25

You have an Azure subscription that contains an Azure Storage account.

You plan to create an Azure container instance named container1 that will use a Docker image named Image1. Image1 contains a Microsoft SQL Server instance that requires persistent storage.

You need to configure a storage service for Container1.

What should you use?

A. Azure Files

<https://vceoreteconvert.com/>

<https://t.me/learningnets>

- B. Azure Blob storage
- C. Azure Queue storage
- D. Azure Table storage

**Correct Answer:** D

**Section:** Implement and manage storage

**Explanation**

**Explanation/Reference:**

#### **QUESTION 26**

You have an app named App1 that runs on two Azure virtual machines named VM1 and VM2.

You plan to implement an Azure Availability Set for App1. The solution must ensure that App1 is available during planned maintenance of the hardware hosting VM1 and VM2.

What should you include in the Availability Set?

- A. one update domain
- B. two fault domains
- C. one fault domain
- D. two update domains

**Correct Answer:** D

**Section:** Implement and manage storage

**Explanation**

**Explanation/Reference:**

Explanation:

Microsoft updates, which Microsoft refers to as planned maintenance events, sometimes require that VMs be rebooted to complete the update. To reduce the impact on VMs, the Azure fabric is divided into update domains to ensure that not all VMs are rebooted at the same time.

Incorrect Answers:

A: An update domain is a group of VMs and underlying physical hardware that can be rebooted at the same time.

B, C: A fault domain shares common storage as well as a common power source and network switch. It is used to protect against unplanned system failure.

References:

<https://petri.com/understanding-azure-availability-sets>

<https://docs.microsoft.com/en-us/azure/virtual-machines/windows/tutorial-availability-sets>

#### **QUESTION 27**

**HOTSPOT**

You have an Azure subscription named Subscription1 that contains the resources shown in the following table:

Name	Type	Location	Resource group
RG1	Resource group	East US	<i>Not applicable</i>
RG2	Resource group	West US	<i>Not applicable</i>
Vault1	Recovery Services vault	West Europe	RG1
storage1	Storage account	East US	RG2
storage2	Storage account	West US	RG1
storage3	Storage account	West Europe	RG2
Analytics1	Log Analytics workspace	East US	RG1
Analytics2	Log Analytics workspace	West US	RG2
Analytics3	Log Analytics workspace	West Europe	RG1

You plan to configure Azure Backup reports for Vault1.

You are configuring the Diagnostics settings for the AzureBackupReports log.

Which storage accounts and which Log Analytics workspaces can you use for the Azure Backup reports of Vault1? To answer, select the appropriate options in the answer area.

**NOTE:** Each correct selection is worth one point.

**Hot Area:**

**Answer Area**

Storage accounts:

▼
storage1 only
storage2 only
storage3 only
storage1, storage2, and storage3

Log Analytics workspaces:

▼
Analytics1 only
Analytics2 only
Analytics3 only
Analytics1, Analytics2, and Analytics3

**Correct Answer:**

**Answer Area**

Storage accounts:

▼
storage1 only
storage2 only
storage3 only
storage1, storage2, and storage3

Log Analytics workspaces:

▼
Analytics1 only
Analytics2 only
Analytics3 only
Analytics1, Analytics2, and Analytics3

**Section: Implement and manage storage**

<https://vceoreteconvert.com/>

<https://t.me/learningnets>

## Explanation

### Explanation/Reference:

Explanation:

Box 1: storage3 only  
Vault1 and storage3 are both in West Europe.

Box 2: Analytics3  
Vault1 and Analytics3 are both in West Europe.

Reference:

<https://docs.microsoft.com/en-us/azure/backup/backup-azure-configure-reports>

## QUESTION 28

**Note: This question is part of a series of questions that present the same scenario. Each question in the series contains a unique solution that might meet the stated goals. Some question sets might have more than one correct solution, while others might not have a correct solution.**

**After you answer a question in this section, you will NOT be able to return to it. As a result, these questions will not appear in the review screen.**

You have an Azure subscription named Subscription1. Subscription1 contains a resource group named RG1. RG1 contains resources that were deployed by using templates.

You need to view the date and time when the resources were created in RG1.

Solution: From the Subscriptions blade, you select the subscription, and then click **Programmatic deployment**.

Does this meet the goal?

- A. Yes
- B. No

**Correct Answer: B**

**Section: Deploy and manage Azure compute resources**

**Explanation**

### Explanation/Reference:

Explanation:

From the RG1 blade, click Deployments. You see a history of deployment for the resource group.

Reference:

<https://docs.microsoft.com/en-us/azure/azure-resource-manager/templates/template-tutorial-create-first-template?tabs=azure-powershell>

## QUESTION 29

**Note: This question is part of a series of questions that present the same scenario. Each question in the series contains a unique solution that might meet the stated goals. Some question sets might have more than one correct solution, while others might not have a correct solution.**

**After you answer a question in this section, you will NOT be able to return to it. As a result, these questions will not appear in the review screen.**

You have an Azure subscription named Subscription1. Subscription1 contains a resource group named RG1. RG1 contains resources that were deployed by using templates.

You need to view the date and time when the resources were created in RG1.

Solution: From the RG1 blade, you click **Automation script**.

Does this meet the goal?

<https://vceoreteconvert.com/>

<https://t.me/learningnets>

- A. Yes
- B. No

**Correct Answer: B**

**Section: Deploy and manage Azure compute resources**

**Explanation**

**Explanation/Reference:**

Explanation:

From the RG1 blade, click Deployments. You see a history of deployment for the resource group.

Reference:

<https://docs.microsoft.com/en-us/azure/azure-resource-manager/templates/template-tutorial-create-first-template?tabs=azure-powershell>

### QUESTION 30

**Note: This question is part of a series of questions that present the same scenario. Each question in the series contains a unique solution that might meet the stated goals. Some question sets might have more than one correct solution, while others might not have a correct solution.**

**After you answer a question in this section, you will NOT be able to return to it. As a result, these questions will not appear in the review screen.**

You have an Azure subscription named Subscription1. Subscription1 contains a resource group named RG1. RG1 contains resources that were deployed by using templates.

You need to view the date and time when the resources were created in RG1.

Solution: From the RG1 blade, you click **Deployments**.

Does this meet the goal?

- A. Yes
- B. No

**Correct Answer: A**

**Section: Deploy and manage Azure compute resources**

**Explanation**

**Explanation/Reference:**

Explanation:

From the RG1 blade, click Deployments. You see a history of deployment for the resource group.

Reference:

<https://docs.microsoft.com/en-us/azure/azure-resource-manager/templates/template-tutorial-create-first-template?tabs=azure-powershell>

### QUESTION 31

You have an Azure subscription named Subscription1.

You deploy a Linux virtual machine named VM1 to Subscription1.

You need to monitor the metrics and the logs of VM1.

What should you use?

- A. Azure HDInsight
- B. Linux Diagnostic Extension (LAD) 3.0
- C. the AzurePerformanceDiagnostics extension
- D. Azure Analysis Services

<https://vceoreteconvert.com/>

<https://t.me/learningnets>

**Correct Answer: C**  
**Section: Deploy and manage Azure compute resources**  
**Explanation**

**Explanation/Reference:**

Explanation:

You can use extensions to configure diagnostics on your VMs to collect additional metric data. The basic host metrics are available, but to see more granular and VM-specific metrics, you need to install the Azure diagnostics extension on the VM. The Azure diagnostics extension allows additional monitoring and diagnostics data to be retrieved from the VM.

Reference:

<https://docs.microsoft.com/en-us/azure/virtual-machines/linux/tutorial-monitoring>

**QUESTION 32**  
**HOTSPOT**

You have an Azure subscription named Subscription1. Subscription1 contains a virtual machine named VM1.

You install and configure a web server and a DNS server on VM1.

VM1 has the effective network security rules shown in the following exhibit:

**Network Interface: vm 1900**    [Effective security rules](#)    Topology ⓘ

Virtual network/subnet: [VMRG-vnet/default](#)    Public IP: **104.40.215.211**    Private IP: **10.0.0.5**    Accelerated networking: **Disabled**

**INBOUND PORT RULES ⓘ**

Network security group [VM1-nsg](#) (attached to network interface: [vm1900](#))    [Add inbound port rule](#)  
 Impacts 0 subnets, 1 network interfaces

PRIORITY	NAME	PORT	PROTOCOL	SOURCE	DESTINATIO...	ACTION
900	▲ Rule2	50-60	Any	Any	Any	🚫 Deny ...
1000	▲ default-allow-rdp	3389	TCP	Any	Any	✅ Allow ...
1010	Rule1	50-500	TCP	Any	Any	✅ Allow ...
65000	AllowVnetInBound	Any	Any	VirtualNet...	VirtualNet...	✅ Allow ...
65001	AllowAzureLoadBalanc...	Any	Any	AzureLoad...	Any	✅ Allow ...
65500	DenyAllInBound	Any	Any	Any	Any	🚫 Deny ...

**OUTBOUND PORT RULES**

Network security group [VM1-nsg](#) (attached to network interface: [vm1900](#))    [Add outbound port](#)  
 Impacts 0 subnets, 1 network interfaces

PRIORITY	NAME	PORT	PROTOCOL	SOURCE	DESTINATIO...	ACTION
1000	Rule3	80	Any	Any	Any	🚫 Deny ...
65000	AllowVnetOutBound	Any	Any	VirtualNet...	VirtualNet...	✅ Allow ...
65001	AllowInternetOutBou...	Any	Any	Any	Internet	✅ Allow ...
65500	DenyAllOutBound	Any	Any	Any	Any	🚫 Deny ...

Use the drop-down menus to select the answer choice that completes each statement based on the information presented in the graphic.

**NOTE:** Each correct selection is worth one point.

**Hot Area:**

## Answer Area

Internet users [answer choice].

	▼
can connect to only the DNS server on VM1	
can connect to only the web server on VM1	
can connect to the web server and the DNS server on VM1	
cannot connect to the web server and the DNS server on VM1	

If you delete Rule2, Internet users [answer choice].

	▼
can connect to only the DNS server on VM1	
can connect to only the web server on VM1	
can connect to the web server and the DNS server on VM1	
cannot connect to the web server and the DNS server on VM1	

**Correct Answer:**

## Answer Area

Internet users [answer choice].

	▼
can connect to only the DNS server on VM1	
can connect to only the web server on VM1	
can connect to the web server and the DNS server on VM1	
cannot connect to the web server and the DNS server on VM1	

If you delete Rule2, Internet users [answer choice].

	▼
can connect to only the DNS server on VM1	
can connect to only the web server on VM1	
can connect to the web server and the DNS server on VM1	
cannot connect to the web server and the DNS server on VM1	

## Section: Deploy and manage Azure compute resources

### Explanation

**Explanation/Reference:**

### QUESTION 33

You plan to deploy three Azure virtual machines named VM1, VM2, and VM3. The virtual machines will host a web app named App1.

You need to ensure that at least two virtual machines are available if a single Azure datacenter becomes unavailable.

What should you deploy?

- A. all three virtual machines in a single Availability Zone
- B. all virtual machines in a single Availability Set
- C. each virtual machine in a separate Availability Zone
- D. each virtual machine in a separate Availability Set

**Correct Answer: B**

## Section: Deploy and manage Azure compute resources

### Explanation

**Explanation/Reference:**

Explanation:

Availability sets are a datacenter configuration to provide VM redundancy and availability. This configuration within a datacenter ensures that during either a planned or unplanned maintenance event, at least one virtual machine is available.

<https://vceoreteconvert.com/>

<https://t.me/learningnets>

Reference:

<https://docs.microsoft.com/en-us/azure/virtual-machines/windows/manage-availability>

<https://docs.microsoft.com/en-us/azure/virtual-machines/windows/tutorial-availability-sets>

#### QUESTION 34

You have an Azure virtual machine named VM1 that runs Windows Server 2019.

You save VM1 as a template named Template1 to the Azure Resource Manager library.

You plan to deploy a virtual machine named VM2 from Template1.

What can you configure during the deployment of VM2?

- A. operating system
- B. administrator username
- C. virtual machine size
- D. resource group

**Correct Answer: B**

**Section: Deploy and manage Azure compute resources**

**Explanation**

**Explanation/Reference:**

Explanation:

When deploying a virtual machine from a template, you must specify:

- the Resource Group name and location for the VM
- the administrator username and password
- an unique DNS name for the public IP

Reference:

<https://docs.microsoft.com/en-us/azure/virtual-machines/windows/ps-template>

#### QUESTION 35

You have an Azure subscription that contains an Azure virtual machine named VM1. VM1 runs a financial reporting app named App1 that does not support multiple active instances.

At the end of each month, CPU usage for VM1 peaks when App1 runs.

You need to create a scheduled runbook to increase the processor performance of VM1 at the end of each month.

What task should you include in the runbook?

- A. Add the Azure Performance Diagnostics agent to VM1.
- B. Modify the VM size property of VM1.
- C. Add VM1 to a scale set.
- D. Increase the vCPU quota for the subscription.
- E. Add a Desired State Configuration (DSC) extension to VM1.

**Correct Answer: E**

**Section: Deploy and manage Azure compute resources**

**Explanation**

**Explanation/Reference:**

Reference:

<https://docs.microsoft.com/en-us/azure/automation/automation-quickstart-dsc-configuration>

#### QUESTION 36

You have an Azure virtual machine named VM1 that runs Windows Server 2019.

<https://vceoreteconvert.com/>

<https://t.me/learningnets>

You sign in to VM1 as a user named User1 and perform the following actions:

- Create files on drive C.
- Create files on drive D.
- Modify the screen saver timeout.
- Change the desktop background.

You plan to redeploy VM1.

Which changes will be lost after you redeploy VM1?

- A. the modified screen saver timeout
- B. the new desktop background
- C. the new files on drive D
- D. the new files on drive C

**Correct Answer: A**

**Section: Deploy and manage Azure compute resources**

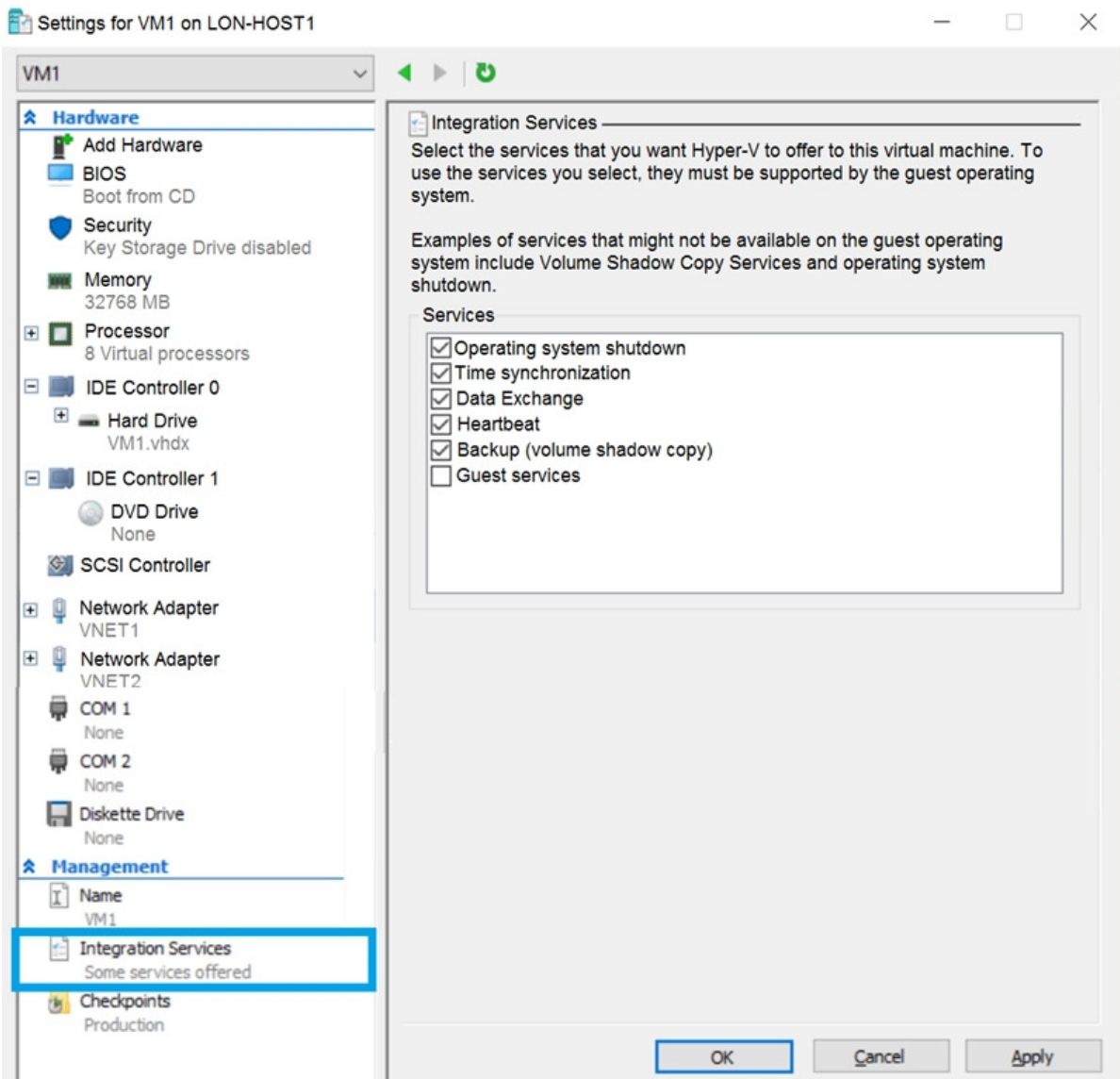
**Explanation**

**Explanation/Reference:**

### **QUESTION 37**

You have an Azure subscription.

You have an on-premises virtual machine named VM1. The settings for VM1 are shown in the exhibit. (Click the **Exhibit** tab.)



You need to ensure that you can use the disks attached to VM1 as a template for Azure virtual machines.

What should you modify on VM1?

- A. the memory
- B. the network adapters
- C. the hard drive
- D. the processor
- E. Integration Services

**Correct Answer: C**

**Section: Deploy and manage Azure compute resources**

**Explanation**

**Explanation/Reference:**

Explanation:

From the exhibit we see that the disk is in the VHDX format.

Before you upload a Windows virtual machine (VM) from on-premises to Microsoft Azure, you must prepare the virtual hard disk (VHD or VHDX). Azure supports only generation 1 VMs that are in the VHD file format and have a fixed sized disk. The maximum size allowed for the VHD is 1,023 GB. You can convert a generation 1 VM from the VHDX file system to VHD and from a dynamically expanding disk to fixed-sized.

<https://vceoreteconvert.com/>

<https://t.me/learningnets>

Reference:

<https://docs.microsoft.com/en-us/azure/virtual-machines/windows/prepare-for-upload-vhd-image>

### QUESTION 38

#### HOTSPOT

You have an Azure subscription that contains a virtual machine scale set. The scale set contains four instances that have the following configurations:

- Operating system: Windows Server 2016
- Size: Standard\_D1\_v2

You run the `get-azvms` cmdlet as shown in the following exhibit:

```
PS Azure:\> (Get-AzVmss -Name WebProd -ResourceGroupName RG1).VirtualMachineProfile.OsProfile.WindowsConfiguration
ProvisionVMAgent      : True
EnableAutomaticUpdates : False
TimeZone              :
AdditionalUnattendContent :
WinRM                  :

Azure:/
PS Azure:\> Get-AzVmss -Name WebProd -ResourceGroupName RG1 | Select -ExpandProperty UpgradePolicy

Mode RollingUpgradePolicy AutomaticOSUpgradePolicy
-----
Automatic                  Microsoft.Azure.Management.Compute.Models.AutomaticOSUpgradePolicy

Azure:/
PS Azure:\> []
```

Use the drop-down menus to select the answer choice that completes each statement based on the information presented in the graphic.

**NOTE:** Each correct selection is worth one point.

**Hot Area:**

### Answer Area

When an administrator changes the virtual machine size, the size will be changed on up to **[answer choice]** virtual machines simultaneously.

	▼
0	
1	
2	
4	

When a new build of the Windows Server 2016 image is released, the new build will be deployed to up to **[answer choice]** virtual machines simultaneously.

	▼
0	
1	
2	
4	

**Correct Answer:**

## Answer Area

When an administrator changes the virtual machine size, the size will be changed on up to **[answer choice]** virtual machines simultaneously.

	▼
0	
1	
2	
4	

When a new build of the Windows Server 2016 image is released, the new build will be deployed to up to **[answer choice]** virtual machines simultaneously.

	▼
0	
1	
2	
4	

### Section: Deploy and manage Azure compute resources

#### Explanation

#### Explanation/Reference:

Explanation:

The Get-AzVmssVM cmdlet gets the model view and instance view of a Virtual Machine Scale Set (VMSS) virtual machine.

Box 1: 0

The enableAutomaticUpdates parameter is set to false. To update existing VMs, you must do a manual upgrade of each existing VM.

Box 2: 4

Enabling automatic OS image upgrades on your scale set helps ease update management by safely and automatically upgrading the OS disk for all instances in the scale set.

Reference:

<https://docs.microsoft.com/en-us/azure/virtual-machine-scale-sets/virtual-machine-scale-sets-upgrade-scale-set>

<https://docs.microsoft.com/en-us/azure/virtual-machine-scale-sets/virtual-machine-scale-sets-automatic-upgrade>

### QUESTION 39

You have an Azure subscription named Subscription1 that is used by several departments at your company. Subscription1 contains the resources in the following table:

Name	Type
storage1	Storage account
RG1	Resource group
container1	Blob container
share1	File share

Another administrator deploys a virtual machine named VM1 and an Azure Storage account named storage2 by using a single Azure Resource Manager template.

You need to view the template used for the deployment.

<https://vceoreteconvert.com/>

<https://t.me/learningnets>

From which blade can you view the template that was used for the deployment?

- A. VM1
- B. RG1
- C. storage2
- D. container1

**Correct Answer:** B

**Section:** Deploy and manage Azure compute resources

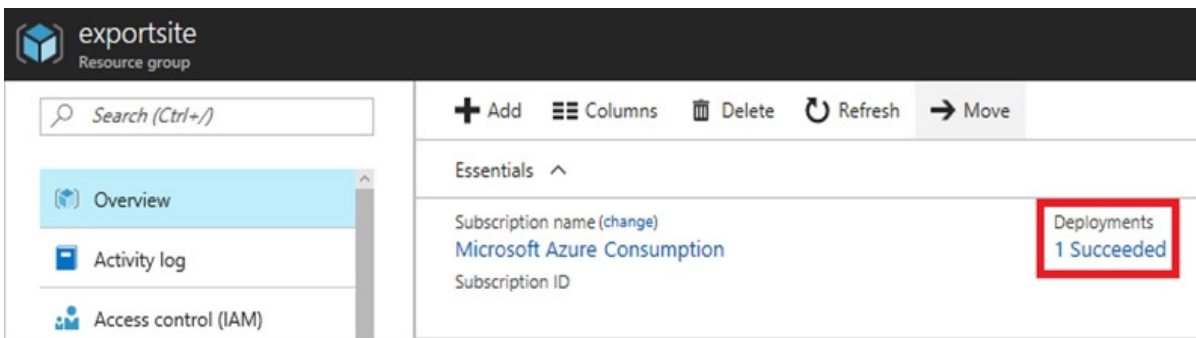
**Explanation**

**Explanation/Reference:**

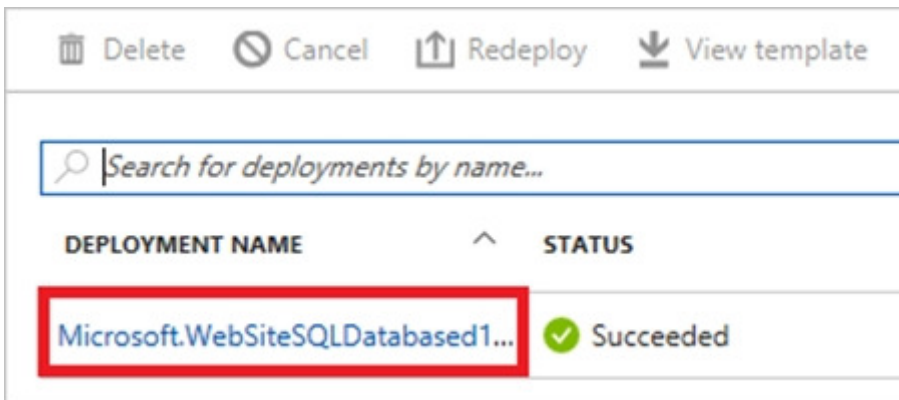
Explanation:

View template from deployment history

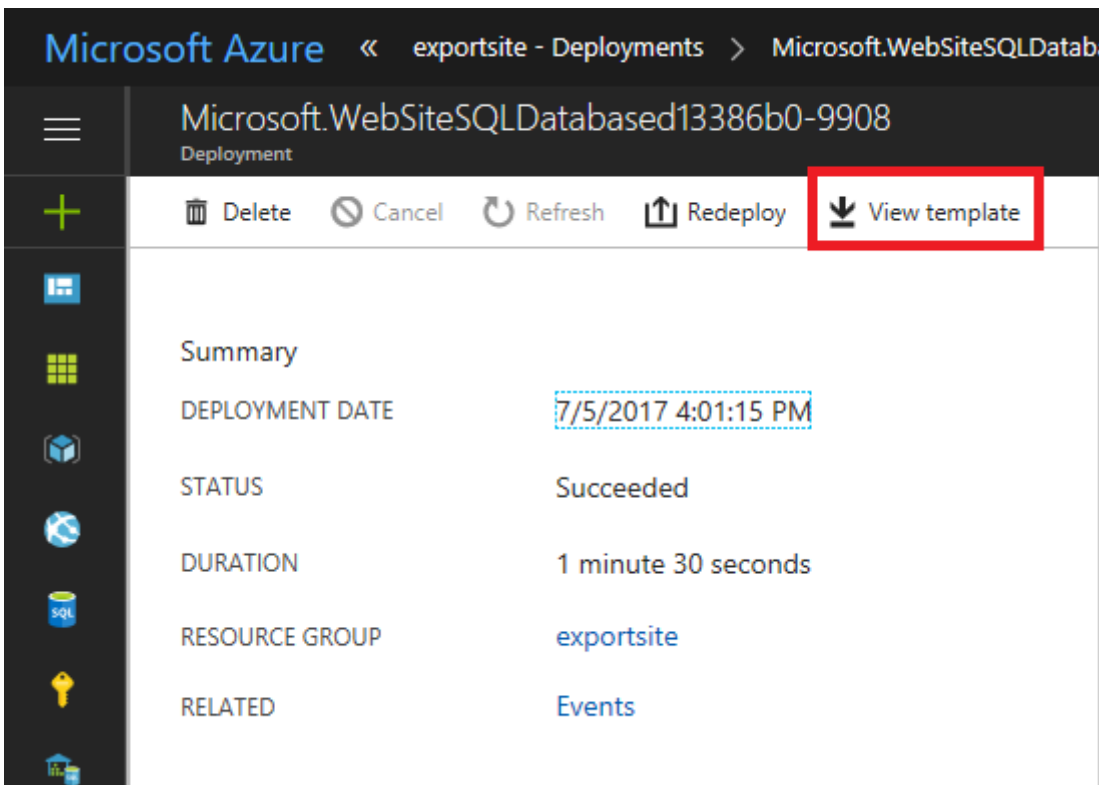
1. Go to the resource group for your new resource group. Notice that the portal shows the result of the last deployment. Select this link.



2. You see a history of deployments for the group. In your case, the portal probably lists only one deployment. Select this deployment.



3. The portal displays a summary of the deployment. The summary includes the status of the deployment and its operations and the values that you provided for parameters. To see the template that you used for the deployment, select View template.



Reference:

<https://docs.microsoft.com/en-us/azure/azure-resource-manager/resource-manager-export-template>

#### QUESTION 40

You have an Azure web app named App1. App1 has the deployment slots shown in the following table:

Name	Function
webapp1-prod	Production
webapp1-test	Staging

In webapp1-test, you test several changes to App1.

You back up App1.

You swap webapp1-test for webapp1-prod and discover that App1 is experiencing performance issues.

You need to revert to the previous version of App1 as quickly as possible.

What should you do?

- A. Redeploy App1
- B. Swap the slots
- C. Clone App1
- D. Restore the backup of App1

**Correct Answer:** B

**Section:** Deploy and manage Azure compute resources

**Explanation**

**Explanation/Reference:**

Explanation:

When you swap deployment slots, Azure swaps the Virtual IP addresses of the source and destination slots, thereby swapping the URLs of the slots. We can easily revert the deployment by swapping back.

<https://vceoreteconvert.com/>

<https://t.me/learningnets>

Reference:

<https://docs.microsoft.com/en-us/azure/app-service/deploy-staging-slots>

#### QUESTION 41

**Note: This question is part of a series of questions that present the same scenario. Each question in the series contains a unique solution that might meet the stated goals. Some question sets might have more than one correct solution, while others might not have a correct solution.**

**After you answer a question in this section, you will NOT be able to return to it. As a result, these questions will not appear in the review screen.**

You have an Azure subscription that contains 10 virtual networks. The virtual networks are hosted in separate resource groups.

Another administrator plans to create several network security groups (NSGs) in the subscription.

You need to ensure that when an NSG is created, it automatically blocks TCP port 8080 between the virtual networks.

Solution: From the Resource providers blade, you unregister the Microsoft.ClassicNetwork provider.

Does this meet the goal?

- A. Yes
- B. No

**Correct Answer: B**

**Section: Configure and manage virtual networking**

**Explanation**

**Explanation/Reference:**

Explanation:

You should use a policy definition.

Resource policy definition used by Azure Policy enables you to establish conventions for resources in your organization by describing when the policy is enforced and what effect to take. By defining conventions, you can control costs and more easily manage your resources.

Reference:

<https://docs.microsoft.com/en-us/azure/azure-policy/policy-definition>

#### QUESTION 42

**Note: This question is part of a series of questions that present the same scenario. Each question in the series contains a unique solution that might meet the stated goals. Some question sets might have more than one correct solution, while others might not have a correct solution.**

**After you answer a question in this section, you will NOT be able to return to it. As a result, these questions will not appear in the review screen.**

You have an Azure subscription that contains 10 virtual networks. The virtual networks are hosted in separate resource groups.

Another administrator plans to create several network security groups (NSGs) in the subscription.

You need to ensure that when an NSG is created, it automatically blocks TCP port 8080 between the virtual networks.

Solution: You assign a built-in policy definition to the subscription.

Does this meet the goal?

- A. Yes

<https://vceoreteconvert.com/>

<https://t.me/learningnets>

B. No

**Correct Answer:** B

**Section:** Configure and manage virtual networking

**Explanation**

**Explanation/Reference:**

Explanation:

Resource policy definition used by Azure Policy enables you to establish conventions for resources in your organization by describing when the policy is enforced and what effect to take. By defining conventions, you can control costs and more easily manage your resources.

Reference:

<https://docs.microsoft.com/en-us/azure/azure-policy/policy-definition>

### QUESTION 43

**Note:** This question is part of a series of questions that present the same scenario. Each question in the series contains a unique solution that might meet the stated goals. Some question sets might have more than one correct solution, while others might not have a correct solution.

**After you answer a question in this section, you will NOT be able to return to it. As a result, these questions will not appear in the review screen.**

You have an Azure subscription that contains 10 virtual networks. The virtual networks are hosted in separate resource groups.

Another administrator plans to create several network security groups (NSGs) in the subscription.

You need to ensure that when an NSG is created, it automatically blocks TCP port 8080 between the virtual networks.

Solution: You configure a custom policy definition, and then you assign the policy to the subscription.

Does this meet the goal?

A. Yes

B. No

**Correct Answer:** A

**Section:** Configure and manage virtual networking

**Explanation**

**Explanation/Reference:**

Explanation:

Resource policy definition used by Azure Policy enables you to establish conventions for resources in your organization by describing when the policy is enforced and what effect to take. By defining conventions, you can control costs and more easily manage your resources.

Reference:

<https://docs.microsoft.com/en-us/azure/azure-policy/policy-definition>

### QUESTION 44

You have two Azure virtual networks named VNet1 and VNet2. VNet1 contains an Azure virtual machine named VM1. VNet2 contains an Azure virtual machine named VM2.

VM1 hosts a frontend application that connects to VM2 to retrieve data.

Users report that the frontend application is slower than usual.

You need to view the average round-trip time (RTT) of the packets from VM1 to VM2.

Which Azure Network Watcher feature should you use?

<https://vceoreteconvert.com/>

<https://t.me/learningnets>

- A. IP flow verify
- B. Connection troubleshoot
- C. Connection monitor
- D. NSG flow logs

**Correct Answer:** C

**Section:** Configure and manage virtual networking

**Explanation**

**Explanation/Reference:**

Explanation:

The connection monitor capability monitors communication at a regular interval and informs you of reachability, latency, and network topology changes between the VM and the endpoint

Incorrect Answers:

A: The IP flow verify capability enables you to specify a source and destination IPv4 address, port, protocol (TCP or UDP), and traffic direction (inbound or outbound). IP flow verify then tests the communication and informs you if the connection succeeds or fails. If the connection fails, IP flow verify tells you which security rule allowed or denied the communication, so that you can resolve the problem.

B: The connection troubleshoot capability enables you to test a connection between a VM and another VM, an FQDN, a URI, or an IPv4 address. The test returns similar information returned when using the connection monitor capability, but tests the connection at a point in time, rather than monitoring it over time, as connection monitor does.

D: The NSG flow log capability allows you to log the source and destination IP address, port, protocol, and whether traffic was allowed or denied by an NSG.

Reference:

<https://docs.microsoft.com/en-us/azure/network-watcher/network-watcher-monitoring-overview>

#### QUESTION 45

You have an Azure subscription that contains a policy-based virtual network gateway named GW1 and a virtual network named VNet1.

You need to ensure that you can configure a point-to-site connection from an on-premises computer to VNet1.

Which two actions should you perform? Each correct answer presents part of the solution.

**NOTE:** Each correct selection is worth one point.

- A. Add a service endpoint to VNet1
- B. Reset GW1
- C. Create a route-based virtual network gateway
- D. Add a connection to GW1
- E. Delete GW1
- F. Add a public IP address space to VNet1

**Correct Answer:** CE

**Section:** Configure and manage virtual networking

**Explanation**

**Explanation/Reference:**

Explanation:

C: A VPN gateway is used when creating a VPN connection to your on-premises network.

Route-based VPN devices use any-to-any (wildcard) traffic selectors, and let routing/forwarding tables direct traffic to different IPsec tunnels. It is typically built on router platforms where each IPsec tunnel is modeled as a network interface or VTI (virtual tunnel interface).

E: Policy-based VPN devices use the combinations of prefixes from both networks to define how traffic is encrypted/decrypted through IPsec tunnels. It is typically built on firewall devices that perform packet

<https://vceoreteconvert.com/>

filtering. IPsec tunnel encryption and decryption are added to the packet filtering and processing engine.

Incorrect Answers:

F: Point-to-Site connections do not require a VPN device or a public-facing IP address.

Reference:

<https://docs.microsoft.com/en-us/azure/vpn-gateway/create-routebased-vpn-gateway-portal>

<https://docs.microsoft.com/en-us/azure/vpn-gateway/vpn-gateway-connect-multiple-policybased-rm-ps>

### QUESTION 46

#### HOTSPOT

You have an Azure subscription that contains the resources in the following table:

Name	Type
VMRG	Resource group
VNet1	Virtual network
VNet2	Virtual network
VM5	Virtual machine connected to VNet1
VM6	Virtual machine connected to VNet2

In Azure, you create a private DNS zone named adatum.com. You set the registration virtual network to VNet2. The adatum.com zone is configured as shown in the following exhibit:

Resource group ( <a href="#">change</a> ) <a href="#">vmrg</a>	Name server 1 -
Subscription ( <a href="#">change</a> ) <a href="#">Azure Pass</a>	Name server 2 -
Subscription ID a4fde29b-d56a-4f6c-8298-6c53cd0b720c	Name server 3 - Name server 4 -
Tags ( <a href="#">change</a> ) <a href="#">Click here to add tags</a>	

Name	Type	TTL	VALUE
@	SOA	3600	Email: azuredns-hostmaster.microsoft.com Host: internal.cloudapp.net Refresh: 3600 Retry: 300 Expire: 2419200 Minimum TTL: 300 Serial number: 1
vm1	A	3600	10.1.0.4
vm9	A	3600	10.1.0.12

For each of the following statements, select Yes if the statement is true. Otherwise, select No.

**NOTE:** Each correct selection is worth one point.

**Hot Area:**

### Answer Area

Statements	Yes	No
The A record for VM5 will be registered automatically in the adatum.com zone.	<input type="radio"/>	<input type="radio"/>
VM5 can resolve VM9.adatum.com.	<input type="radio"/>	<input type="radio"/>
VM6 can resolve VM9.adatum.com.	<input type="radio"/>	<input type="radio"/>

**Correct Answer:**

### Answer Area

Statements	Yes	No
The A record for VM5 will be registered automatically in the adatum.com zone.	<input type="radio"/>	<input checked="" type="radio"/>
VM5 can resolve VM9.adatum.com.	<input type="radio"/>	<input checked="" type="radio"/>
VM6 can resolve VM9.adatum.com.	<input checked="" type="radio"/>	<input type="radio"/>

#### Section: Configure and manage virtual networking

##### Explanation

##### Explanation/Reference:

Explanation:

Box 1: No

Azure DNS provides automatic registration of virtual machines from a single virtual network that's linked to a private zone as a registration virtual network. VM5 does not belong to the registration virtual network though.

Box 2: No

Forward DNS resolution is supported across virtual networks that are linked to the private zone as resolution virtual networks. VM5 does belong to a resolution virtual network.

Box 3: Yes

VM6 belongs to registration virtual network, and an A (Host) record exists for VM9 in the DNS zone. By default, registration virtual networks also act as resolution virtual networks, in the sense that DNS resolution against the zone works from any of the virtual machines within the registration virtual network.

Reference:

<https://docs.microsoft.com/en-us/azure/dns/private-dns-overview>

#### QUESTION 47

HOTSPOT

<https://vceoreteconvert.com/>

<https://t.me/learningnets>

You have an Azure subscription that contains a virtual network named VNet1. VNet1 uses an IP address space of 10.0.0.0/16 and contains the subnets in the following table:

Name	IP address range
Subnet0	10.0.0.0/24
Subnet1	10.0.1.0/24
Subnet2	10.0.2.0/24
GatewaySubnet	10.0.254.0/24

Subnet1 contains a virtual appliance named VM1 that operates as a router.

You create a routing table named RT1.

You need to route all inbound traffic from the VPN gateway to VNet1 through VM1.

How should you configure RT1? To answer, select the appropriate options in the answer area.

**NOTE:** Each correct selection is worth one point.

**Hot Area:**

### Answer Area

Address prefix

	▼
10.0.0.0/16	
10.0.1.0/24	
10.0.254.0/24	

Next hop type

	▼
Virtual appliance	
Virtual network	
Virtual network gateway	

Assigned to

	▼
GatewaySubnet	
Subnet0	
Subnet1 and Subnet2	

**Correct Answer:**

## Answer Area

Address prefix

	▼
10.0.0.0/16	
10.0.1.0/24	
10.0.254.0/24	

Next hop type

	▼
Virtual appliance	
Virtual network	
Virtual network gateway	

Assigned to

	▼
GatewaySubnet	
Subnet0	
Subnet1 and Subnet2	

**Section: Configure and manage virtual networking**  
**Explanation**

**Explanation/Reference:**

### QUESTION 48

You have five Azure virtual machines that run Windows Server 2016. The virtual machines are configured as web servers.

You have an Azure load balancer named LB1 that provides load balancing services for the virtual machines.

You need to ensure that visitors are serviced by the same web server for each request.

What should you configure?

- A. Floating IP (direct server return) to **Enabled**
- B. Idle Time-out (minutes) to **20**
- C. Protocol to **UDP**
- D. Session persistence to **Client IP and Protocol**

**Correct Answer: D**

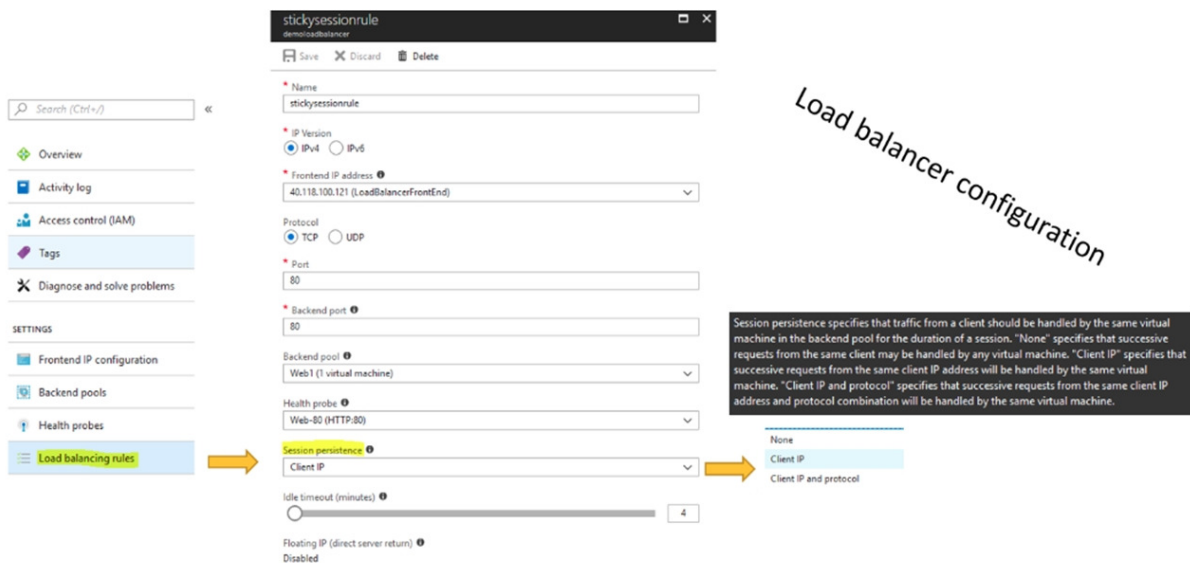
**Section: Configure and manage virtual networking**  
**Explanation**

**Explanation/Reference:**

Explanation:

With Sticky Sessions when a client starts a session on one of your web servers, session stays on that specific server. To configure An Azure Load-Balancer For Sticky Sessions set Session persistence to Client IP.

On the following image you can see sticky session configuration:



Reference:

<https://cloudopszone.com/configure-azure-load-balancer-for-sticky-sessions/>

**QUESTION 49**  
**HOTSPOT**

You have an Azure subscription that contains the virtual machines shown in the following table:

Name	Operating system	Connects to
VM1	Windows Server 2019	Subnet1
VM2	Windows Server 2019	Subnet2

VM1 and VM2 use public IP addresses. From Windows Server 2019 on VM1 and VM2, you allow inbound Remote Desktop connections.

Subnet1 and Subnet2 are in a virtual network named VNET1.

The subscription contains two network security groups (NSGs) named NSG1 and NSG2. NSG1 uses only the default rules.

NSG2 uses the default rules and the following custom incoming rule:

- Priority: 100
- Name: Rule1
- Port: 3389
- Protocol: TCP
- Source: Any
- Destination: Any
- Action: Allow

NSG1 is associated to Subnet1. NSG2 is associated to the network interface of VM2.

For each of the following statements, select Yes if the statement is true. Otherwise, select No.

**NOTE:** Each correct selection is worth one point.

**Hot Area:**

<https://vceoreteconvert.com/>

<https://t.me/learningnets>

## Answer Area

Statements	Yes	No
From the Internet, you can connect to VM1 by using Remote Desktop.	<input type="radio"/>	<input type="radio"/>
From the Internet, you can connect to VM2 by using Remote Desktop.	<input type="radio"/>	<input type="radio"/>
From VM1, you can connect to VM2 by using Remote Desktop	<input type="radio"/>	<input type="radio"/>

Correct Answer:

## Answer Area

Statements	Yes	No
From the Internet, you can connect to VM1 by using Remote Desktop.	<input type="radio"/>	<input checked="" type="radio"/>
From the Internet, you can connect to VM2 by using Remote Desktop.	<input checked="" type="radio"/>	<input type="radio"/>
From VM1, you can connect to VM2 by using Remote Desktop	<input checked="" type="radio"/>	<input type="radio"/>

Section: Configure and manage virtual networking  
Explanation

Explanation/Reference:

### QUESTION 50 HOTSPOT

You have a virtual network named VNET1 that contains the subnets shown in the following table:

Name	Subnet	Network security group (NSG)
Subnet1	10.10.1.0/24	NSG1
Subnet2	10.10.2.0/24	None

You have two Azure virtual machines that have the network configurations shown in the following table:

Name	Subnet	IP address	NSG
VM1	Subnet1	10.10.1.5	NSG2
VM2	Subnet2	10.10.2.5	None
VM3	Subnet2	10.10.2.6	None

For NSG1, you create the inbound security rule shown in the following table:

Priority	Source	Destination	Destination port	Action
101	10.10.2.0/24	10.10.1.0/24	TCP/1433	Allow

For NSG2, you create the inbound security rule shown in the following table:

<https://vceoreteconvert.com/>

<https://t.me/learningnets>

Priority	Source	Destination	Destination port	Action
125	10.10.2.5	10.10.1.5	TCP/1433	Block

For each of the following statements, select Yes if the statement is true. Otherwise, select No.

**NOTE:** Each correct selection is worth one point.

**Hot Area:**

### Answer Area

Statements	Yes	No
VM2 can connect to the TCP port 1433 services on VM1.	<input type="radio"/>	<input type="radio"/>
VM1 can connect to the TCP port 1433 services on VM2.	<input type="radio"/>	<input type="radio"/>
VM2 can connect to the TCP port 1433 services on VM3.	<input type="radio"/>	<input type="radio"/>

**Correct Answer:**

### Answer Area

Statements	Yes	No
VM2 can connect to the TCP port 1433 services on VM1.	<input checked="" type="radio"/>	<input type="radio"/>
VM1 can connect to the TCP port 1433 services on VM2.	<input checked="" type="radio"/>	<input type="radio"/>
VM2 can connect to the TCP port 1433 services on VM3.	<input checked="" type="radio"/>	<input type="radio"/>

### Section: Configure and manage virtual networking

#### Explanation

#### Explanation/Reference:

Explanation:

Box 1: Yes

The inbound security rule for NSG1 allows TCP port 1433 from 10.10.2.0/24 (or Subnet2 where VM2 and VM3 are located) to 10.10.1.0/24 (or Subnet1 where VM1 is located) while the inbound security rule for NSG2 blocks TCP port 1433 from 10.10.2.5 (or VM2) to 10.10.1.5 (or VM1). However, the NSG1 rule has a higher priority (or lower value) than the NSG2 rule.

Box 2: Yes

No rule explicitly blocks communication from VM1. The default rules, which allow communication, are thus applied.

Box 3: Yes

No rule explicitly blocks communication between VM2 and VM3 which are both on Subnet2. The default rules, which allow communication, are thus applied.

Reference:

<https://docs.microsoft.com/en-us/azure/virtual-network/security-overview>

<https://vceoreteconvert.com/>

<https://t.me/learningnets>

**QUESTION 51**  
**HOTSPOT**

You have an Azure subscription named Subscription1.

Subscription1 contains the virtual machines in the following table:

Name	IP address
VM1	10.0.1.4
VM2	10.0.2.4
VM3	10.0.3.4

Subscription1 contains a virtual network named VNet1 that has the subnets in the following table:

Name	Address space	Connected virtual machine
Subnet1	10.0.1.0/24	VM1
Subnet2	10.0.2.0/24	VM2
Subnet3	10.0.3.0/24	VM3

VM3 has multiple network adapters, including a network adapter named NIC3. IP forwarding is enabled on NIC3. Routing is enabled on VM3.

You create a route table named RT1 that contains the routes in the following table:

Address prefix	Next hop type	Next hop address
10.0.1.0/24	Virtual appliance	10.0.3.4
10.0.2.0/24	Virtual appliance	10.0.3.4

You apply RT1 to Subnet1 and Subnet2.

For each of the following statements, select Yes if the statement is true. Otherwise, select No.

**NOTE:** Each correct selection is worth one point.

**Hot Area:**

**Answer Area**

Statements	Yes	No
VM3 can establish a network connection to VM1.	<input type="radio"/>	<input type="radio"/>
If VM3 is turned off, VM2 can establish a network connection to VM1.	<input type="radio"/>	<input type="radio"/>
VM1 can establish a network connection to VM2.	<input type="radio"/>	<input type="radio"/>

**Correct Answer:**

## Answer Area

Statements	Yes	No
VM3 can establish a network connection to VM1.	<input checked="" type="radio"/>	<input type="radio"/>
If VM3 is turned off, VM2 can establish a network connection to VM1.	<input type="radio"/>	<input checked="" type="radio"/>
VM1 can establish a network connection to VM2.	<input checked="" type="radio"/>	<input type="radio"/>

### Section: Configure and manage virtual networking

#### Explanation

#### Explanation/Reference:

Explanation:

IP forwarding enables the virtual machine a network interface is attached to:

- Receive network traffic not destined for one of the IP addresses assigned to any of the IP configurations assigned to the network interface.
- Send network traffic with a different source IP address than the one assigned to one of a network interface's IP configurations.

The setting must be enabled for every network interface that is attached to the virtual machine that receives traffic that the virtual machine needs to forward. A virtual machine can forward traffic whether it has multiple network interfaces or a single network interface attached to it.

Box 1: Yes

The routing table allows connections from VM3 to VM1 and VM2. And as IP forwarding is enabled on VM3, VM3 can connect to VM1.

Box 2: No

VM3, which has IP forwarding, must be turned on, in order for VM2 to connect to VM1.

Box 3: Yes

The routing table allows connections from VM1 and VM2 to VM3. IP forwarding on VM3 allows VM1 to connect to VM2 via VM3.

Reference:

<https://docs.microsoft.com/en-us/azure/virtual-network/virtual-networks-udr-overview>

<https://www.quora.com/What-is-IP-forwarding>

#### QUESTION 52

Your on-premises network contains an SMB share named Share1.

You have an Azure subscription that contains the following resources:

- A web app named webapp1
- A virtual network named VNET1

You need to ensure that webapp1 can connect to Share1.

What should you deploy?

- A. an Azure Application Gateway
- B. an Azure Active Directory (Azure AD) Application Proxy
- C. an Azure Virtual Network Gateway

<https://vceoreteconvert.com/>

<https://t.me/learningnets>

**Correct Answer: C**

**Section: Configure and manage virtual networking**

**Explanation**

**Explanation/Reference:**

Explanation:

A Site-to-Site VPN gateway connection can be used to connect your on-premises network to an Azure virtual network over an IPsec/IKE (IKEv1 or IKEv2) VPN tunnel.

This type of connection requires a VPN device, a VPN gateway, located on-premises that has an externally facing public IP address assigned to it.

Incorrect Answers:

B: Application Proxy is a feature of Azure AD that enables users to access on-premises web applications from a remote client.

Reference:

<https://docs.microsoft.com/en-us/azure/vpn-gateway/vpn-gateway-howto-site-to-site-resource-manager-portal>

### QUESTION 53

You plan to deploy several Azure virtual machines that will run Windows Server 2019 in a virtual machine scale set by using an Azure Resource Manager template.

You need to ensure that NGINX is available on all the virtual machines after they are deployed.

What should you use?

- A. Azure Active Directory (Azure AD) Application Proxy
- B. Azure Application Insights
- C. Azure Custom Script Extension
- D. the `New-AzConfigurationAssignment` cmdlet

**Correct Answer: C**

**Section: Configure and manage virtual networking**

**Explanation**

**Explanation/Reference:**

### QUESTION 54

You have an Azure web app named webapp1.

Users report that they often experience HTTP 500 errors when they connect to webapp1.

You need to provide the developers of webapp1 with real-time access to the connection errors. The solution must provide all the connection error details.

What should you do first?

- A. From webapp1, enable Web server logging
- B. From Azure Monitor, create a workbook
- C. From Azure Monitor, create a Service Health alert
- D. From webapp1, turn on Application Logging

**Correct Answer: A**

**Section: Monitor and back up Azure resources**

**Explanation**

**Explanation/Reference:**

<https://vceoreteconvert.com/>

<https://t.me/learningnets>

**QUESTION 55**

You have an Azure subscription that has a Recovery Services vault named Vault1. The subscription contains the virtual machines shown in the following table:

Name	Operating system	Auto-shutdown
VM1	Windows Server 2012 R2	Off
VM2	Windows Server 2016	19:00
VM3	Ubuntu Server 18.04 LTS	Off
VM4	Windows 10	19:00

You plan to schedule backups to occur every night at 23:00.

Which virtual machines can you back up by using Azure Backup?

- A. VM1 and VM3 only
- B. VM1, VM2, VM3 and VM4
- C. VM1 and VM2 only
- D. VM1 only

**Correct Answer: B**

**Section: Monitor and back up Azure resources**

**Explanation**

**Explanation/Reference:**

Explanation:

Azure Backup supports backup of 64-bit Windows server operating system from Windows Server 2008.

Azure Backup supports backup of 64-bit Windows 10 operating system.

Azure Backup supports backup of 64-bit Ubuntu Server operating system from Ubuntu 12.04.

Azure Backup supports backup of VM that are shutdown or offline.

Reference:

<https://docs.microsoft.com/en-us/azure/backup/backup-support-matrix-iaas>

<https://docs.microsoft.com/en-us/azure/virtual-machines/linux/endorsed-distros>

**QUESTION 56**

HOTSPOT

You create a Recovery Services vault backup policy named Policy1 as shown in the following exhibit:

## Policy1

 Associated items  Delete  Save  Discard

### Backup schedule

\* Frequency \* Time \* Timezone  
Daily 11:00 PM (UTC) Coordinated Universal Time

### Retention range

Retention of daily backup point

\* At \* For  
11:00 PM 30 Day(s)

Retention of weekly backup point

\* On \* At \* For  
Sunday 11:00 PM 10 Week(s)

Retention of monthly backup point

Week Based Day Based

\* On \* At \* For  
1 11:00 PM 36 Month(s)

Retention of yearly backup point

Week Based Day Based

\* In \* On \* At \* For  
March 1 11:00 PM 10 Year(s)

Use the drop-down menus to select the answer choice that completes each statement based on the information presented in the graphic.

**NOTE:** Each correct selection is worth one point.

**Hot Area:**

## Answer Area

The backup that occurs on Sunday, March 1, will be retained for [answer choice].

	▼
30 days	
10 weeks	
36 months	
10 years	

The backup that occurs on Sunday, November 1, will be retained for [answer choice].

	▼
30 days	
10 weeks	
36 months	
10 years	

Correct Answer:

## Answer Area

The backup that occurs on Sunday, March 1, will be retained for [answer choice].

	▼
30 days	
10 weeks	
36 months	
10 years	

The backup that occurs on Sunday, November 1, will be retained for [answer choice].

	▼
30 days	
10 weeks	
36 months	
10 years	

### Section: Monitor and back up Azure resources

#### Explanation

#### Explanation/Reference:

Explanation:

Box 1: 10 years

The yearly backup point occurs to 1 March and its retention period is 10 years.

Box 2: 36 months

The monthly backup point occurs on the 1<sup>st</sup> of every month and its retention period is 36 months.

#### QUESTION 57

You have the Azure virtual machines shown in the following table:

Name	Azure region
VM1	West Europe
VM2	West Europe
VM3	North Europe
VM4	North Europe

You have a Recovery Services vault that protects VM1 and VM2.

You need to protect VM3 and VM4 by using Recovery Services.

What should you do first?

- A. Create a new Recovery Services vault
- B. Create a storage account
- C. Configure the extensions for VM3 and VM4
- D. Create a new backup policy

**Correct Answer:** A

**Section:** Monitor and back up Azure resources

**Explanation**

**Explanation/Reference:**

Explanation:

A Recovery Services vault is a storage entity in Azure that houses data. The data is typically copies of data, or configuration information for virtual machines (VMs), workloads, servers, or workstations. You can use Recovery Services vaults to hold backup data for various Azure services

Reference:

<https://docs.microsoft.com/en-us/azure/site-recovery/azure-to-azure-tutorial-enable-replicatio>