



KodeKloud

Service Section

The Power of Edge Networking

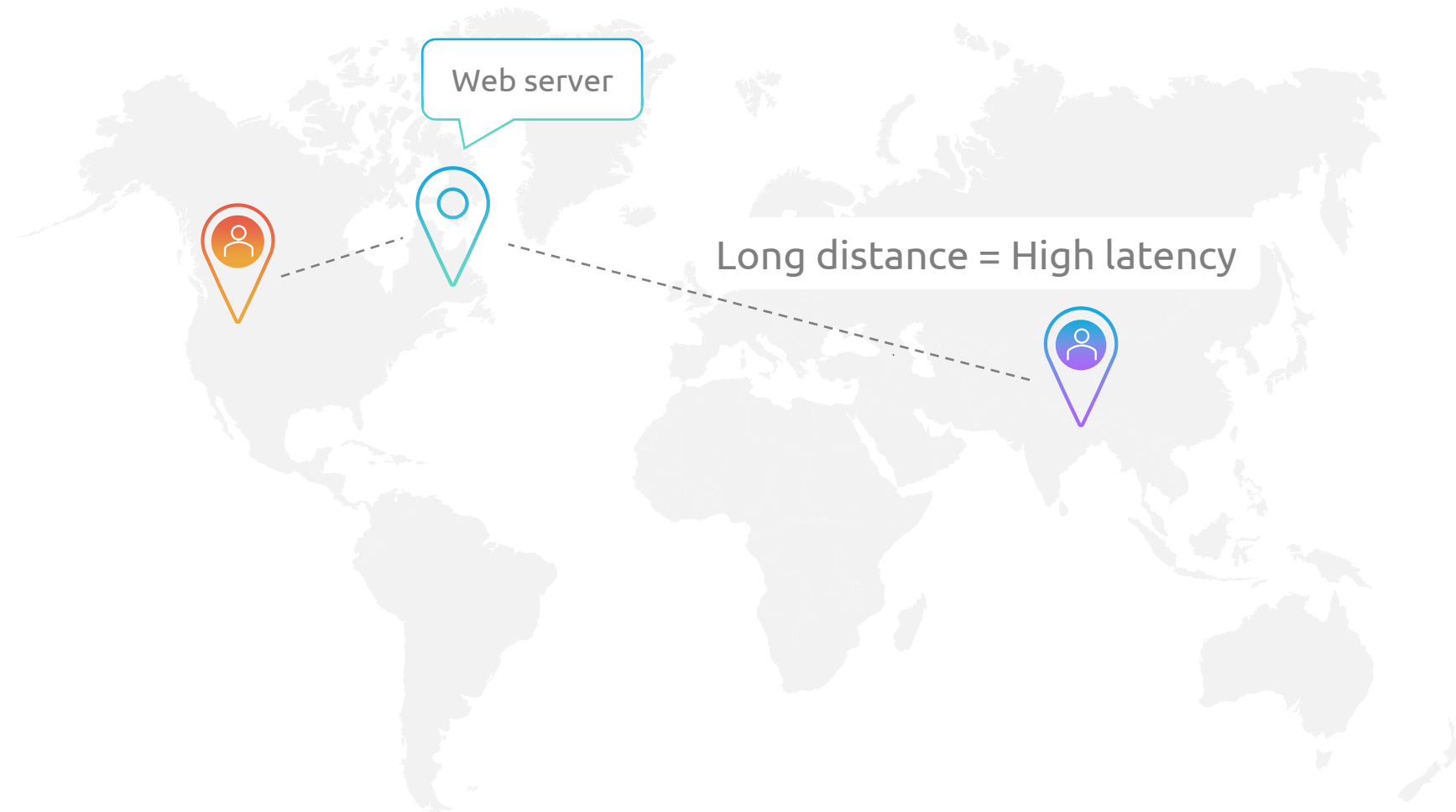
Amazon CloudFront



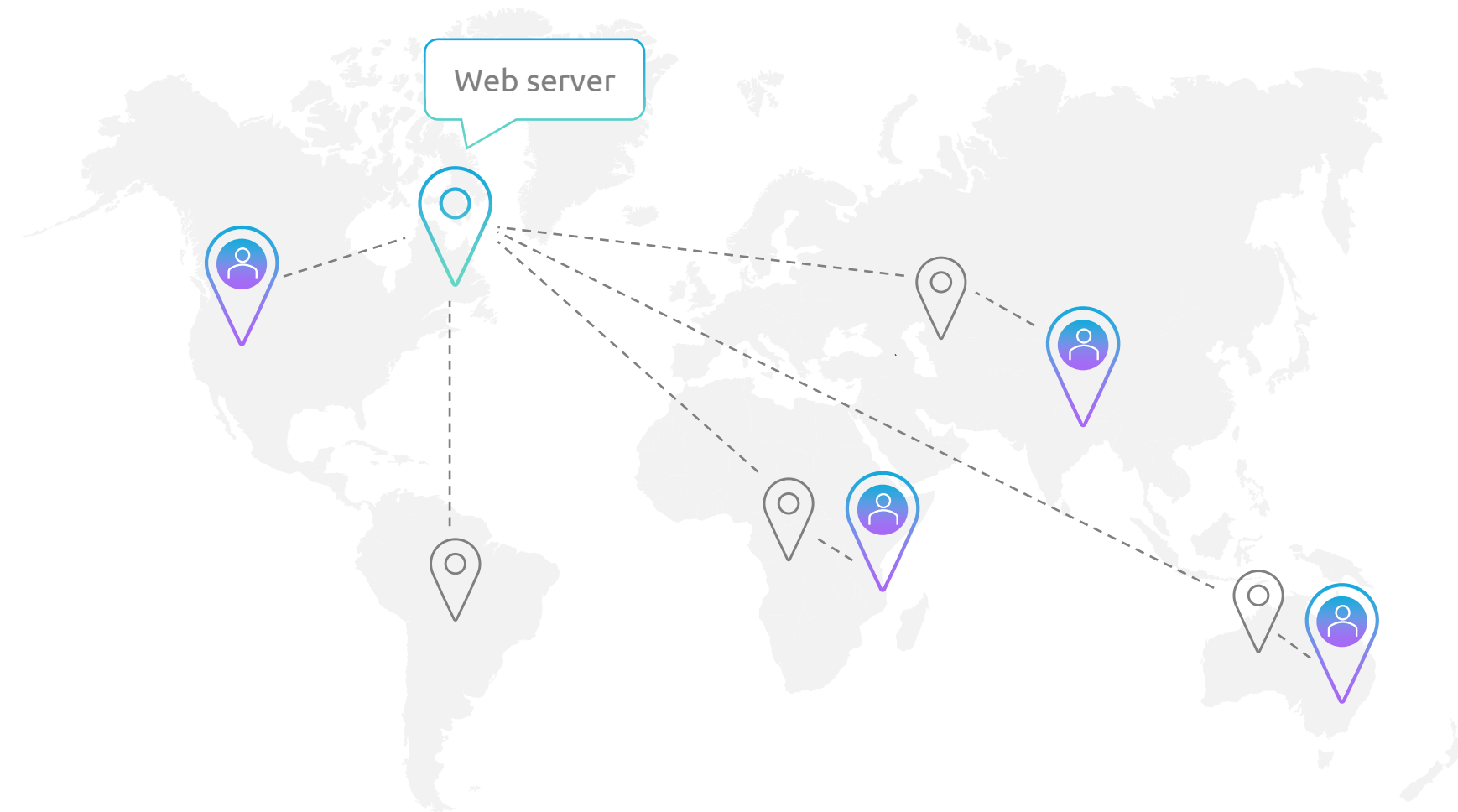
What we learned in Cloud Practitioner



Global Content Delivery & Edge Locations



Global Content Delivery & Edge Locations



What is CloudFront?





Edge Networking – What is Amazon CloudFront?

Amazing Picture of CloudFront
in action and how it works.
What Problem is it solving



CloudFront – Basic Components and Features



Components of Amazon CloudFront



Edge Locations



Origin/Content



Distributions



Policies



Cloudfront – Edge locations

More description of Edge locations

Features of Edge Locations

Features of Edge locations



Cloudfront – Origin/Content

Description of Origins

Features of Origins

Features of Origins



Cloudfront – Distributions

Description of Distributions

Features of Distributions

Features of Distributions



Cloudfront – Policies

Description of Policies

Features of Policies

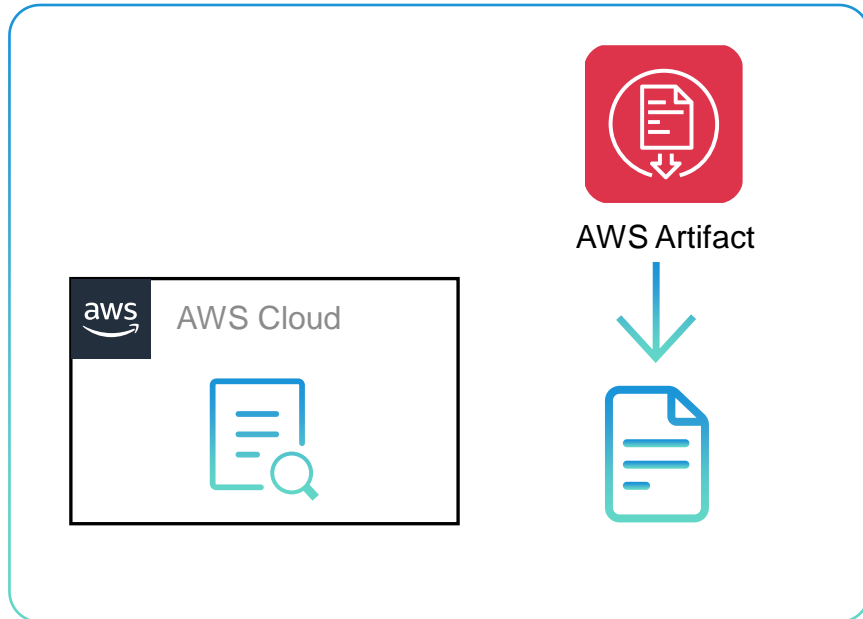
Features of Policies



CloudFront – Basic Integrations with other Services



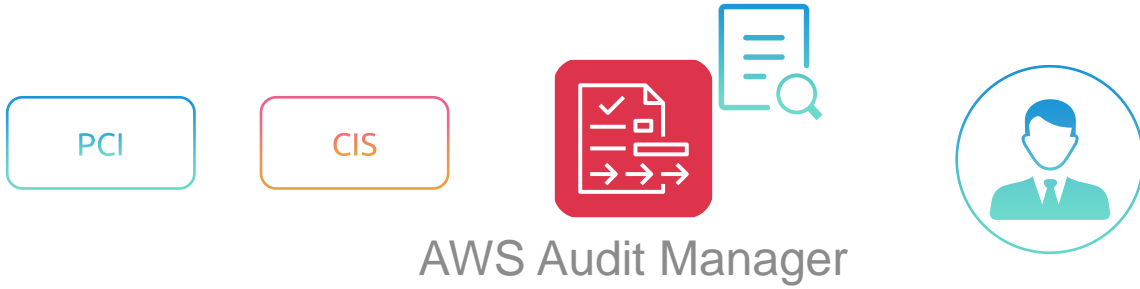
CloudFront Integration as Origins with S3, EC2, and ELBs



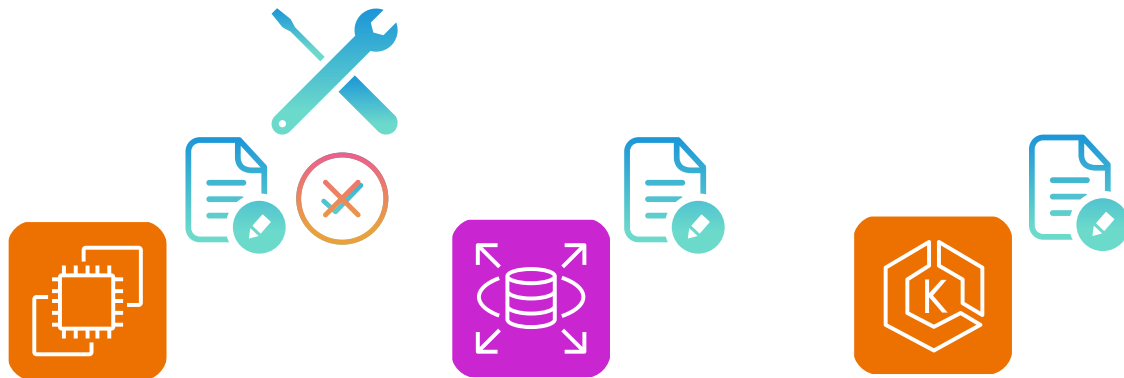
- AWS undergoes **certification** reviews and audits to meet **regulatory** requirements
- **Audit** reports are available on AWS **Artifact**
- Customers can review and accept **agreements** in the **Artifact**



CloudFront Integration with AWS Certificate Manager



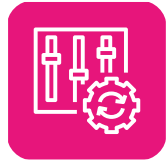
- AWS **Audit manager** continuously collects **data** to prepare for **audits** and ensures that you comply with **regulatory** standards



- **Audit manager** helps build audit-ready **reports**



CloudFront Integration with AWS WAF and AWS Shield

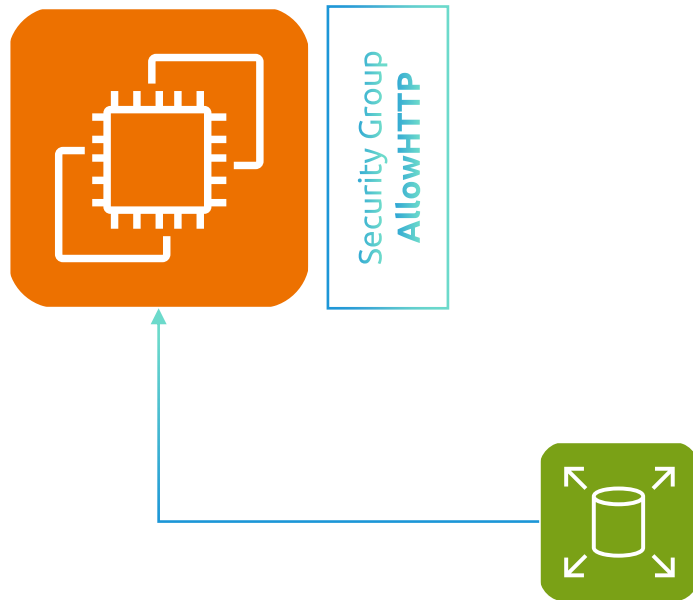


AWS Config

Attached new security group: AllowHTTP

Attached EBS Volume

- Tracks how the **resource** is configured and records previous configuration **state**, so you can see how the configs for it have changed over time



- Because **AWS Config** keeps track of historical **configurations** of **resources**, it is great for auditing and compliance



CloudFront – Basic Use Cases for CloudFront





Cloudfront – Accelerate Static Content Delivery

Description of Policies

Features of Policies

Features of Policies





Cloudfront – Accelerate Dynamic Content Delivery

Description of Policies

Features of Policies

Features of Policies





Cloudfront – Serve Video on Demand or live streaming video

Description of Policies

Features of Policies

Features of Policies





Cloudfront – Encrypt Specific fields throughout system processing.

Description of Policies

Features of Policies

Features of Policies





Cloudfront – Run Serverless Code at the Edge globally

Description of Policies

Features of Policies

Features of Policies



CloudFront – Summary of all sections – from what to use cases



The shared responsibility model delineates the customer's responsibilities and AWS's responsibilities



Unmanaged services need to be secured by users



Managed services offload some of the security responsibility onto AWS





KodeKloud