

SECURITYNET: Assessing Machine Learning Vulnerabilities on Public Models

Boyang Zhang Zheng Li Ziqing Yang Xinlei He Michael Backes Mario Fritz Yang Zhang

CISPA Helmholtz Center for Information Security

Abstract

While advanced machine learning (ML) models are deployed in numerous real-world applications, previous works demonstrate these models have security and privacy vulnerabilities. Various empirical research has been done in this field. However, most of the experiments are performed on target ML models trained by the security researchers themselves. Due to the high computational resource requirement for training advanced models with complex architectures, researchers generally choose to train a few target models using relatively simple architectures on typical experiment datasets. We argue that to understand ML models' vulnerabilities comprehensively, experiments should be performed on a large set of models trained with various purposes (not just the purpose of evaluating ML attacks and defenses). To this end, we propose using publicly available models with weights from the Internet (public models) for evaluating attacks and defenses on ML models. We establish a database, namely SECURITYNET, containing 910 annotated image classification models. We then analyze the effectiveness of several representative attacks/defenses, including model stealing attacks, membership inference attacks, and backdoor detection on these public models. Our evaluation empirically shows the performance of these attacks/defenses can vary significantly on public models compared to self-trained models. We share SECURITYNET with the research community¹ and advocate researchers to perform experiments on public models to better demonstrate their proposed methods' effectiveness in the future.

1 Introduction

Machine learning (ML) has been gaining momentum in multiple fields and achieving success in real-world deployments. However, in recent years, researchers have shown that ML models are vulnerable to various security and privacy risks, such as membership inference [50], model steal-

ing/extraction [53], and backdoor [21]. Quantifying and mitigating ML models' vulnerabilities thus become increasingly important topics.

Currently, most of the research in this field focuses on proposing different attacks and countermeasures. To evaluate these methods, the common practice is that the researchers train models by themselves and treat these models as potential victims' models (target models) in the experiments. Based on some of the well-known papers on two popular attacks against ML models, including membership inference and model stealing [10, 25, 28, 32, 36, 38, 44, 46, 52, 55, 61], we find that all of them conduct experiments on target models trained from scratch by the authors.

This practice, however, faces several limitations. The behavior of the models can vary greatly on different architectures and different datasets. Since training state-of-the-art ML models is resource-intensive and time-consuming, the target models used in machine learning security and privacy research tend to be limited to the most popular architectures trained on the common and approachable experiment datasets (e.g., CIFAR-10 [1], CIFAR-100 [1], and SVHN [2]). Also, the number of models used in the evaluation is often small.

Furthermore, even with the same model architecture and dataset, different procedures and hyperparameters used for training can still drastically alter the model's behavior. For state-of-the-art models, huge efforts are dedicated to fine-tuning hyperparameters to find the best training procedures, thus maximizing the chosen model architecture's potential on the target task. Since research in security and privacy tends to focus on developing attacks and countermeasures, it is unrealistic for the researchers to have a similar level of dedication to training their victim models. Subsequently, the victim model in the experiments might not be adequately trained, whereby the model's performance on the target task is lower than the given architecture's best result (we show evidence in Section 2).

Publishing models with weights on the Internet (*public models*) is becoming a common practice in the machine learning community to increase research reproducibility and pro-

¹We publish SECURITYNET at <https://github.com/SecurityNet-Research/SecurityNet>.

vide benchmarks on different ML tasks. These public models cover a wide variety of model architectures and datasets. Moreover, many of these public models are already integrated into companies' products deployed in the real world. For instance, certain transformer models on Hugging Face² have been integrated into Amazon SageMaker.³ *To fully assess the effectiveness of different attacks and defenses on machine learning models, we argue that the experiments should be conducted on such public models when possible.*

1.1 Our Contributions

In this work, we take the first step towards conducting ML models' security and privacy vulnerability evaluation on public models. We collect a large-scale dataset of public models, namely SECURITYNET, to evaluate three popular attacks/defenses in this field, including membership inference attack, model stealing attack, and backdoor detection. We omit the popular topic of evasion attacks due to existing benchmarks [16, 24], but we do include baseline results and discussion in Appendix C. Note that we focus on image classification models as they have been extensively studied by the trustworthy machine learning research community.

SECURITYNET. We build a public model database SECURITYNET by collecting a large number of public models used for image classification from multiple open-source platforms on the Internet, such as Paper with Code [3], Kaggle [4], and GitHub [5]. Many of our public models come from machine learning libraries that contain models with various architectures trained on multiple datasets. These models are usually trained for performance benchmarks, so they have as high as possible prediction accuracy on the target task (of the given architectures). We refer to such models as *benchmark models*. We further manually search for publicly available models from research papers published in top-tier security, machine learning, and computer vision conferences. Among these models from the research papers, we refer to those related to the topic of machine learning security and privacy as *security models*, and the rest are considered as part of the benchmark models. We notice that most of the security models are used for adversarial example research. In general, benchmark and security models will be the main focus of our analysis.

SECURITYNET comprises 910 models covering 42 different datasets. For each model in SECURITYNET, we further annotate its relevant information from three dimensions, namely dataset (e.g., sample size, split ratio, topic category, class fidelity, etc.), model (e.g., number of parameters, FLOPs, architecture type, etc.), and metadata (e.g., publisher type, published year, venue, model purpose, etc.). We hope this information can help security researchers find appropriate public models promptly. Also, we will continue enlarging

SECURITYNET with newer models to monitor whether ML models are more or less susceptible to the attacks investigated over time. We plan to share SECURITYNET with the research community to facilitate the research in machine learning security and privacy.

Evaluation Results. With the help of SECURITYNET, we are able to perform an extensive analysis of model stealing, membership inference, and backdoor detection on a large set of public models. To the best of our knowledge, this has not been done before. Our experiments confirm some known results from the literature (but on a much larger number of models), uncover some new insights, and show that attacks and defenses can behave differently on public models than on researchers' self-trained models.

For model stealing on benchmark models from SECURITYNET, we find using a larger and more complex surrogate model architecture to limit the difference between the surrogate and victim models does not improve the attack performance, which differs from previous results [41]. Also, we observe a negative correlation between the attack performance and the victim model's target task performance. Such a negative correlation has been observed in [27] previously; our experiments on a much larger number of (public) models further confirm this. In addition, if the target model is too complex (we test model stealing on a RegNetY-320 model [45] with 145 million parameters for the first time), model stealing is ineffective. The public models trained for security and privacy research (security models) typically perform much worse on their target tasks than the benchmark models. Interestingly, for the low-performing security models, we observe a positive correlation between the attack and the target task performance (the opposite of our observation on benchmark models). All these new insights demonstrate the benefits of performing model stealing experiments on public models.

For membership inference, we evaluate two types of attack methods, namely metric-based attacks [51] and MLP-based attacks [39, 46, 50]. We empirically confirm some results shown in previous works [50], e.g., the attack performance positively correlates with the model's overfitting level on the target task on the large-scale public models. On the other hand, we also discover that the attack methods can be dataset-dependent. For instance, previous works show that the MLP-based attack using full posteriors as its input has the same performance as using the top-k (e.g., top-3) posteriors [46]. However, on datasets with a large number of classes, e.g., 1,000 classes (ImageNet-1k [17]), we show that using top-3 posteriors as inputs achieve much better performance than full posteriors (on average, the attack AUC increases by 5.1%). Some of the security models with lower performance on their target tasks appear to be less vulnerable to membership inference attacks than benchmark models, even when they share a similar overfitting level. We do not make the same observation on security models that achieve similar target task performance as benchmark models.

²<https://huggingface.co/>.

³<https://aws.amazon.com/machine-learning/hugging-face/>.

Finally, we examine three backdoor detection techniques on the public models from SECURITYNET: Neural Cleanse [56], Strong Intentional Perturbation (STRIP) [18], and NEO [54]. Assuming all the benchmark models collected are non-backdoored, we discover that Neural Cleanse has high false positive rates on benchmark models trained on CIFAR-10 and SVHN (20.9% and 13.7%, respectively). By manually checking the generated trigger images, we confirm that the detected triggers are indeed falsely identified. On the other hand, both STRIP and NEO are more robust. They successfully avoid labeling any clean inputs as backdoored samples on CIFAR-10 and SVHN models in our experiments. This again shows the necessity of evaluating attacks and defenses on public models.

Implications. This work aims to provide a more realistic overview of the landscape of machine learning attacks and defenses. We also want to point out that some of the current evaluation results on researchers’ self-trained models might not generalize to public models. We advise researchers to examine their proposed methods on at least a few public models for more comprehensive evaluations in the future. Hence, we will share SECURITYNET. We hope our annotations and experiment results on baseline attacks/defenses will greatly minimize the effort for researchers to find appropriate public models for their purpose.

2 SECURITYNET

One of the main contributions of our work is SECURITYNET, a database containing publicly available models with weights. We focus on one of the most popular machine learning tasks, image classification, as it is also typically used to demonstrate the effectiveness of attacks and defenses on ML models.

2.1 Model Collection

Datasets to Models. Our main model collection process, namely datasets to models, consists of two steps, namely dataset searching and model collection. In a nutshell, we first find a diverse set of datasets and then collect public models trained on these datasets.

For dataset searching, we focus on image datasets that are mainly used for classification tasks. Note that we also plan to extend to other types of tasks in the future. The diversity of the datasets is critical. We consider two sources for dataset collection, namely Paper with Code [3] and Kaggle [4]. Paper with Code is a website that provides open-source content, including machine learning papers, codes, datasets, methods, and evaluation results. The website’s collection of datasets covers the majority of datasets commonly used for machine learning research. Kaggle is a crowd-sourcing platform that is popular in the data science community. It is well-known

for hosting data science competitions and challenges in cooperation with many companies and research institutes. The datasets used in these competitions have a huge variety and typically differ from the experiment datasets collected from Paper with Code.

After collecting a variety of datasets, we then use these datasets as a starting point to search for publicly available models trained on these datasets. Our search can be summarized in a few directions. First and foremost, pre-trained model libraries are some of the most valuable sources, such as PyTorch’s official torchvision library.⁴ They typically contain a wide range of popular models that are trained to have high performance on the target tasks. We refer to these models as *benchmark models*. Models from reputable sources also provide high confidence in their qualities. These qualities, including no additional data used, a proper partition of training and test data, no malicious data (e.g., backdoor triggers), etc., are especially important for our later analysis. These model libraries, however, also suffer some downsides. Specifically, these libraries typically contain only well-established architectures and benchmark experiment datasets.

Furthermore, we extend our benchmark model collection to other sources, such as models from Kaggle competitions and Paper with Code. These sources provide a much wider range of models in several dimensions, such as model variety, purpose, and quality. We emphasize here that due to the wide range of sources in our model collection, the quality of the models cannot be guaranteed in the same way as with reputable sources (e.g., the Pytorch torchvision library). However, this variation in model quality yields a valuable comparative dimension to our analysis.⁵

Additionally, there are models that we do not include in the database. We exclude models with corrupted weights that cannot be loaded properly or have extremely low performance. Moreover, the same model can appear on multiple platforms. We also exclude these duplicates to avoid over-representation of the same model.

Academic Papers to Models. Furthermore, to obtain an overview of the current models used in research, we manually search for image classification models provided by authors of papers published in recent top-tier conferences. We consider the following security & privacy, machine learning, and computer vision conferences in the last four years: IEEE S&P, USENIX Security, ACM CCS, NDSS, NeurIPS, ICML, ICLR, CVPR, ICCV, and ECCV. To simplify the process, for machine learning and computer vision conferences, we directly search on GitHub for the corresponding repositories (e.g., using keywords “CVPR 2022”). Considering the popularity of GitHub, we believe we capture the majority of the published models in those venues. Meanwhile, for security conferences, we manually check all papers to obtain the models.

⁴<https://github.com/pytorch/vision>.

⁵For simplicity, these models are also considered as benchmark models in SECURITYNET.

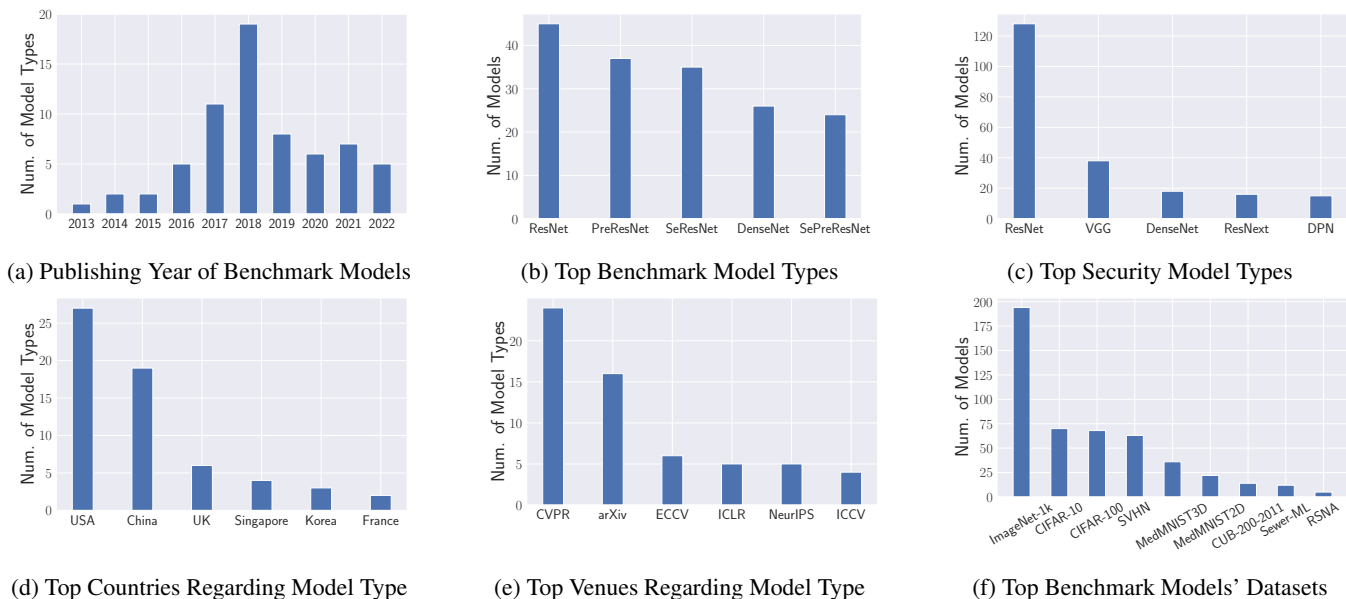


Figure 1: SECURITYNET statistics.

We also especially focus on models from papers on the topic of trustworthy machine learning from all the conferences considered and refer to them as *security models*. During our collection process, we noticed that the majority of the security models are derived from papers on adversarial example studies. Unfortunately, we cannot find any public models on model stealing and membership inference.⁶ Overall, the addition of these models will allow us to conduct a more comprehensive analysis in Section 4. Note that the models from research papers that are not related to security and privacy are considered benchmark models as well.

2.2 Annotation

Once having collected the models, we then annotate their relevant information.⁷ The annotation serves two purposes. First, it provides a guideline for our analysis of the current landscape of security and privacy attacks/defenses. Second, it serves as a valuable source for future research.

The annotation for models in SECURITYNET includes quantitative information about their training sets, such as the number of classes, size, image dimensions, etc. Furthermore, we record qualitative information, such as topic categories. Our models' datasets cover a broad range of topics, including natural scenery, medical scans, traffic signs, satellite images, and more. Within each topic category, we further distinguish the dataset's class granularity. For example, while ImageNet-1k and CUB-200-2011 are both categorized as natural scenery,

⁶Note that for backdoor attacks, our goal is to apply the current backdoor detection methods to the public models. Thus, we do not include the backdoored models published with backdoor-related research papers in our database.

⁷We explain our annotation process in detail in Appendix A.

ImageNet-1k includes multiple types of objects ranging from different animals to cars and park benches. We label datasets like ImageNet-1k as coarse-grained datasets. CUB-200-2011 only contains images of different types of birds. Therefore, it is labeled as a fine-grained dataset.

Besides models' datasets, we further annotate their intrinsic properties and metadata. Intrinsic model properties include the number of parameters, FLOPs, architecture type, presence of certain elements (e.g., dropout, batch normalization), etc. We also annotate the models' metadata, such as publishing venues (for research-based models), number of authors, etc. Given the large number of models we have collected, we can analyze different attacks and defenses from the metadata dimension, which, to our knowledge, has not been done before. Appendix A in the appendix provides the complete list of categories annotated by us for SECURITYNET.

2.3 Summary

In total, SECURITYNET contains 910 public models, of which 665 are benchmark models and 245 are security models. These models are trained over 42 different datasets from 13 categories. The models cover an extensive set of 220 architectures (e.g., ResNet-18 [23], ResNet-50, DLA-169 [58], BagNet-33 [7], etc.) based on 60 different model types (ResNet, DLA, BagNet, etc.). The oldest model type included was first introduced in 2012 [30] and the latest one [37] in 2022. Note that for benchmark models, we record the year when the model type was first introduced instead of the trained models' publishing time. Figure 1 shows some general statistics of the models in SECURITYNET.

Model collection for SECURITYNET will be a continuous

process. We plan to update SECURITYNET on a bi-annual basis to add new publicly available ML models. This allows us to keep tracking ML models’ security and privacy vulnerabilities over time. We will also make SECURITYNET easily accessible to the research community.

Security Models vs. Benchmark Models. Based on the models collected, we first observe that the majority of the security models are trained on small experiment datasets, such as CIFAR-10, CIFAR-100, and SVHN. Only a small amount of the papers include results on more complex datasets like ImageNet-1k. These four datasets also cover the majority of the papers on security and privacy research that we have found. Besides, the model architectures used in security models are also limited, e.g., the majority of the architectures are the simpler and popular ones, such as ResNet-18, VGG-16, etc. Figure 2 shows the model performance difference between the benchmark models and the security models trained on CIFAR-10, CIFAR-100, and ImageNet-1k. We only use benchmark models that share similar architectures with the security models so that the inherent differences in model architectures do not affect the comparison. For CIFAR-10 and CIFAR-100 (too few models for ImageNet-1k), we notice that there are two distinct clusters of models, and both have lower performance than benchmark models. From Figure 3, we can observe the overfitting gaps between benchmark models and security models are not too different for CIFAR-10 and ImageNet-1k models, while CIFAR-100 security models have a lower overfitting level in general. Note that the security models here are for adversarial example research, and we cannot find any published target models for model stealing and membership inference. Nevertheless, some of the membership inference and model stealing papers’ reported target task accuracy is still lower than the benchmark models’ accuracy in SECURITYNET. For instance, CIFAR-100 models from the popular papers in Section 1 have an average accuracy of 69.0%, compared to our benchmark models’ average accuracy of 78.5%. Additionally, we find the performance gap still exists in recently published papers (CIFAR-10: 79% [13]; CIFAR-10: 77%, CIFAR-100: 20% [57]). We believe these security models are not trained to the architecture’s maximum “potential” due to limited hyperparameter tuning efforts. For simplicity, previous works [6, 36] in the security/privacy domain only use one set of batch size, learning rate, optimizer, etc., without further hyperparameter fine-tuning. In conclusion, the above results demonstrate that some security models are not adequately trained compared to benchmark models.

3 Attack Methodology and Evaluation Setup

In this paper, we study three types of attacks/defenses on machine learning models, namely model stealing attack, membership inference attack, and backdoor detection. They are among the most well-explored subjects in the field of machine

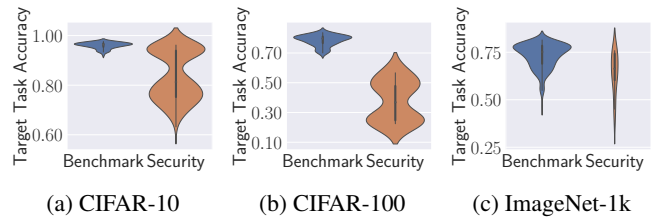


Figure 2: The model’s target task performance with respect to benchmark models and security models.

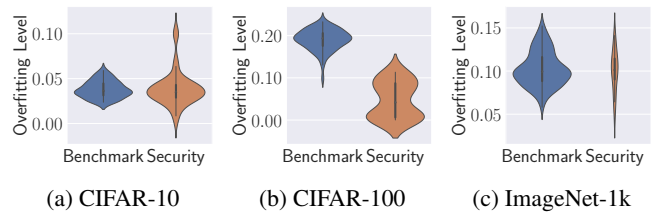


Figure 3: The model’s overfitting level with respect to benchmark models and security models.

learning security and privacy. In the future, we plan to extend our analyses to other types of attacks/defenses with models from SECURITYNET.

3.1 Model Stealing

Threat Model. In this attack, the adversary aims to build a surrogate model that mimics the target model’s behavior. Following one of the most popular attacks [53], we consider an adversary with black-box access to the target model that outputs the full posterior. The adversary also has access to an auxiliary dataset for querying the target model. Note that the auxiliary dataset does not necessarily come from the same distribution as the original training set.

Methodology. The adversary first initiates a surrogate model which can adopt a different architecture than the target model [41]. Then, the adversary queries the samples from their auxiliary dataset to the target model and gets the output posteriors. In the end, the adversary trains their surrogate model leveraging the posteriors as ground truth.

In our experiments, we adopt ResNet-18 to initiate the surrogate models. We further show in Section 4.1 that a more complex surrogate model does not increase the attack performance. We consider two settings for the auxiliary datasets, i.e., partial training set⁸ from the target model’s training set (default setting) and a large out-of-distribution dataset (specifically, a subset of ImageNet-1k). We train ResNet-18 for 30 epochs using an SGD optimizer with a learning rate of 0.01.

Metrics. We adopt two most widely-used metrics, namely attack accuracy and attack agreement [27], in the evaluation.

⁸We use 50% of the total training data. We evaluate how different query budget affects the attack performance in Appendix B.

Accuracy measures the performance of the surrogate model on the original task, while agreement calculates the prediction agreement between the surrogate model and the target model.

3.2 Membership Inference

Threat Model. The adversary aims to determine whether a given sample is used to train a target model [50]. Following the existing work [36, 39], the adversary is assumed to hold a small subset of the training data which is used as member samples⁹ and an auxiliary dataset that represents non-member samples. Note that we use the test set of the corresponding dataset as this auxiliary dataset. For instance, when experimenting on models trained on ImageNet-1k, the auxiliary dataset is ImageNet-1k’s test set. The adversary also has access to the black-box target model that outputs full posteriors.

Methodology. We use two popular attacks, namely metric-based [51] and MLP-based [46, 50] attacks. The former distinguishes member (training) samples from non-member (auxiliary) samples based on behavioral differences in prediction statistics, such as prediction correctness and modified prediction entropy [51]. For MLP-based attacks, the adversary feeds the member and non-member samples to the target model and gets the output posteriors. The adversary then trains an attack model (i.e., a binary classifier) based on the posteriors. In our experiments, the attack model is assembled with one layer of 64 neurons and one layer of 32 neurons using the ReLU activation function. We train the attack model for 50 epochs using the Adam optimizer with a learning rate of 0.01.

Metrics. We use AUC to evaluate the attack performance. The higher the AUC, the better the performance is. Concretely, 0.5 represents random guessing, and 1.0 is a perfect prediction.

3.3 Backdoor Detection

In backdoor attacks, the adversary injects the backdoor into the target model without degrading its original performance [12]. Generally, there are two types of backdoor attacks, i.e., untargeted and targeted. Untargeted attacks aim to misclassify triggered images, while targeted attacks misclassify triggered images to one specific class. There exist various types of defenses against backdoors [11, 15, 18, 22, 26, 34, 35, 54, 56]. Since the backdoor injection occurs during training and models in SECURITYNET are already trained, we choose to evaluate backdoor detection methods on these models.

⁹In many membership inference research, such as [39, 46, 50], the adversary is assumed to have a shadow dataset to train their shadow model. To conduct experiments, the researchers split a dataset into four equal parts: two are used as the target model’s training and test sets, and the other two are for the shadow model. We cannot follow the same setting here as the models in SECURITYNET are all trained. Thus, we make a stronger assumption for the adversary having access to a partial training set of the target model [36, 39]. Such a stronger assumption also allows us to assess the worst-case scenario of membership leakage threat.

Methodology. We evaluate three popular backdoor detection methods: Neural Cleanse [56], Strong Intentional Perturbation (STRIP) [18], and NEO [54]. The three cover two types of approaches: model inspection and input filtering.

Neural Cleanse is a model inspection approach that aims to detect targeted backdoor attacks. The key idea of this method is to find the minimal trigger needed to misclassify all samples into each label and leverage an outlier detection method to detect if any trigger candidate is smaller than all the other candidates. If such an outlier exists, the model is potentially backdoored, and the trigger can be returned for further analysis. We run Neural Cleanse for 50 epochs and use their default threshold value for detecting outliers.

STRIP is an input-filtering approach. The key idea is that triggered inputs are less affected by perturbations than normal inputs. By overlaying various images on the incoming input, the detector examines the randomness (prediction entropy) of the model’s prediction on the overlaid input. The detection considers the model is backdoored if the prediction entropy is low. We use 2,000 images for testing and the default number of 10 images for overlaying input.

NEO is another input-filtering approach. The key idea is that triggers within the input contribute the most to the prediction. The detection first calculates the dominant color of the image, then randomly selects a small region in the input image and replaces it with the dominant color. If the new prediction differs from the original one, NEO assumes the selected region contains a potential trigger and then superimposes it onto the test set. If most of the test sets have different predictions after adding the potential trigger, the current input image is labeled as a backdoored image, and the model is also identified as a backdoored model. We use 200 sampled 4×4 regions (for 32×32 images) and 3 K-means clusters for calculating the dominant color; 0.8 is adopted as the threshold.¹⁰ We use 2,000 images from the test set for evaluation.

Metrics. As the models in SECURITYNET are supposedly free of backdoors, we adopt the false positive rate to evaluate whether these detection methods can falsely recognize clean models as backdoored ones.

4 Experiment Results

4.1 Model Stealing

We now evaluate the performance of model stealing attacks on public models from SECURITYNET.

The Effect of Target Model’s Training Set. For our evaluation, we primarily use 389 benchmark models trained on CIFAR-10, CIFAR-100, SVHN, ImageNet-1k, and CUB-200-2011 datasets. These models cover a wide variety of architectures that allow us to make more comprehensive observations

¹⁰If more than 80% of the images are misclassified after adding the trigger, the trigger is then confirmed.

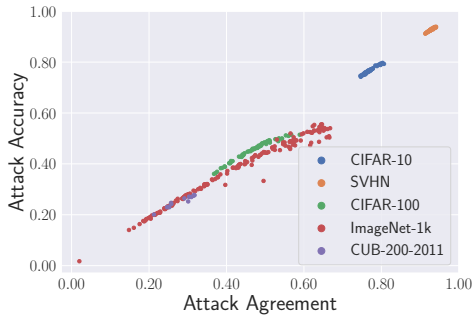


Figure 4: The relationship between the attack agreement and the attack accuracy for model stealing on benchmark models across multiple datasets.

on attack behaviors. First, as seen in Figure 4, we observe a strong positive correlation between the two evaluation metrics (with a 0.991 Pearson correlation coefficient), i.e., the attack agreement (see Section 3) and the attack accuracy on all 389 models. Due to the page limit, we mainly use attack accuracy as the metric for model stealing in the following analysis. Secondly, Figure 5 shows that the attack achieves exceptionally high performance on datasets with a small number of classes and abundant training data, such as CIFAR-10 and SVHN. For more complex datasets like ImageNet-1k, CIFAR-100, and CUB-200-2011, however, the attack performance significantly deteriorates. For instance, the average attack accuracy for ImageNet-1k models is 36.3% while the average target models’ accuracy is 73.1%, i.e., the ratio of the two is 0.496. Meanwhile, the corresponding ratios for CIFAR-10 and SVHN models are 0.796 and 0.953. In addition, we find that while the target task performance of CUB-200-2011 models is similar to that of ImageNet-1k models, the attack accuracy on CUB-200-2011 models is significantly lower.¹¹ Note that ImageNet-1k has more classes in total, but CUB-200-2011 has higher class granularity, which means the two datasets have comparable classification complexity. These results indicate that the model stealing attack is especially ineffective on some outlier datasets, which, to our knowledge, has not been shown previously.

Out-Of-Distribution Auxiliary Dataset. While by default, we assume the adversary has access to a partial training set as the auxiliary dataset, we now consider another scenario where the adversary uses an out-of-distribution dataset to initiate their attack. More concretely, we leverage a subset of the large and diverse ImageNet-1k dataset as the auxiliary dataset to steal benchmark models trained on CIFAR-10, SVHN, CIFAR-100, and CUB-200-2011. Figure 6 shows the attack performance deteriorates across a large number of benchmark models when using the out-of-distribution auxiliary dataset. In addition, we find that the attack performance on SVHN

¹¹Note that the model stealing performance on CUB-200-2011 in [41] is higher than ours, this is because the authors fine-tune their surrogate model and target model on base models pre-trained with ImageNet-1k.

models decreases more significantly than on CIFAR-10 models. For instance, the average attack accuracy decreases by 27.8% on SVHN and 19.0% on CIFAR-10, respectively. We suspect this is due to the fact that the images in ImageNet-1k are more similar to the images in CIFAR-10 than to the images in SVHN.¹² Further, on a more complex dataset, the attack performance can suffer even greater, e.g., with an average degradation of 41.7% on CIFAR-100. For the previous poor-performing CUB-200-2011 models, the attack accuracy also decreases by 21.4%, even though the auxiliary dataset contains many classes similar to the original dataset (e.g., bird species), and overall has more samples than the original partial training set (100k vs. 5k). In summary, we find that using out-of-distribution data as the auxiliary dataset does not benefit model stealing.

The Effect of Target Model’s Performance. From the perspective of target models’ inherent properties, we mainly study the relation between their target task performance and the corresponding model stealing attacks’ performance. Figure 5 shows a distinct negative correlation between the two. While the correlation is clear on both smaller datasets, such as CIFAR-10 (-0.693) and SVHN (-0.603), it is more evident on larger and more complex datasets, like ImageNet-1k (-0.844) and CIFAR-100 (-0.873). We present the Pearson correlation coefficients in the parenthesis. This negative correlation has been observed by Jagielski et al. [27] previously. Our finding, however, differs in magnitude. Due to the wide range and variety of benchmark models, we find that the attack is largely likely to fail on high-performing models. For example, on most ImageNet-1k models with target task accuracy above 75%, the attack accuracy does not surpass 40%. In a more concrete example, our model stealing attack on RegNetY-320 [45] with 146 million parameters only achieves 25.6% attack accuracy. This implies that the model stealing performing well on simpler architectures does not guarantee success on complex and high-performing models.

More Complex Surrogate Model. All results above are done using the ResNet-18 architecture as the surrogate model. Previous work [41] has shown that using a more complex surrogate model can improve model stealing performance. We now conduct the attack with a larger surrogate model, i.e., WRN-50 [59], to evaluate whether similar observations can be made on benchmark models as well. Figure 7 shows the attack performance actually deteriorates on all three datasets. Specifically, for the SVHN, CIFAR-10, and CIFAR-100 models, the attack accuracy degrades by an average of 5.8%, 29.0%, and 47.3%, respectively. In contrast to previous work, our experiments show that larger and more complex surrogate models do not improve model stealing performance on SECURITYNET.

Benchmark vs. Security Models. As mentioned in Section 2, we also extensively search for public models used in security/privacy research (named security models). Here, we exam-

¹²Previous work [41] makes similar observations.

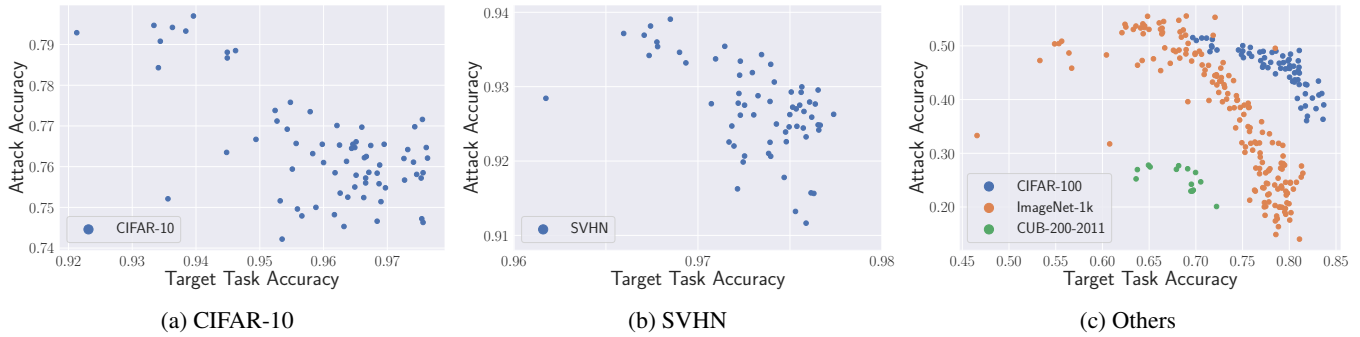


Figure 5: The relationship between the model stealing performance (attack accuracy) and the target model’s task accuracy across various benchmark models when using a partial training set as the auxiliary dataset.

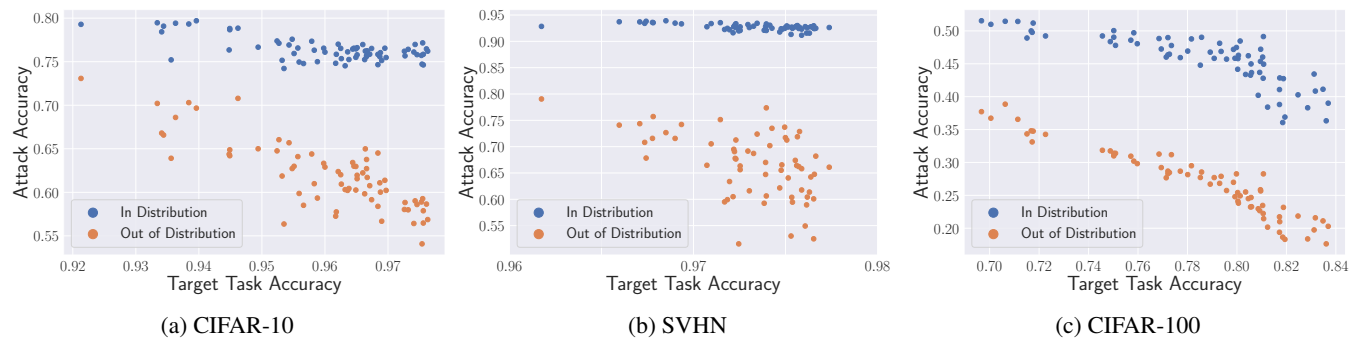


Figure 6: The relationship between the model stealing performance (attack accuracy) and the target model’s task accuracy across various benchmark models when using an out-of-distribution auxiliary dataset.

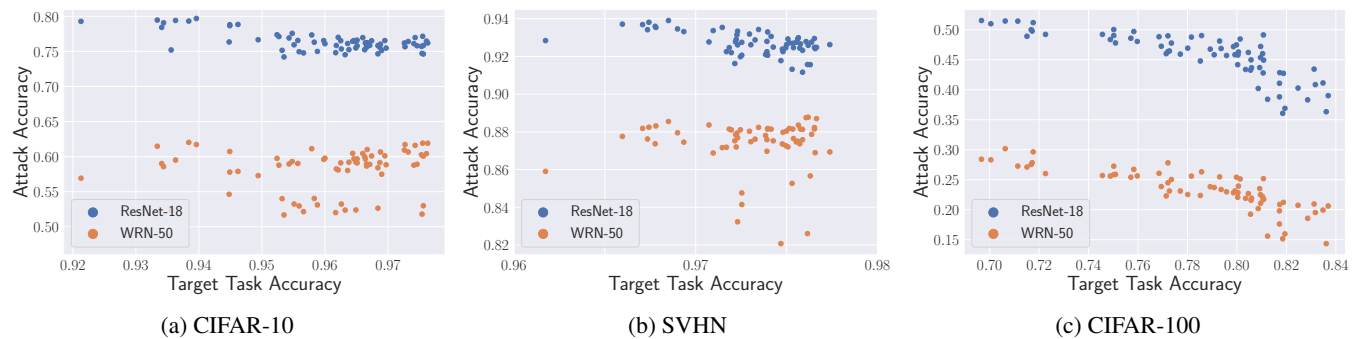


Figure 7: The relationship between the model stealing performance (attack accuracy) and the target model’s task accuracy across various benchmark models when using a more complex surrogate model, i.e., WRN-50.

ine whether the attack behaves differently on security models compared to the benchmark models above.

Recall that the security models trained on CIFAR-10 can be divided into two clusters in terms of target task performance (see Figure 2). Both Figure 8 and Figure 9 show the cluster of high-performing security models behave very similarly to the benchmark models, where the two evaluation metrics have a high agreement, and the attack performance is negatively correlated (-0.362) with model’s target task performance. Interestingly, the low-performing cluster shows drastically different behavior. First, many of these models

have high attack agreement while the attack accuracy varies. Secondly, the correlation between the attack accuracy and target task accuracy is distinctively positive (0.998). We find models used for studying model stealing attacks in previous works [36] exhibit similar behavior.¹³ This drastic change in correlation indicates that when the target model is not trained to its maximum “potential,” the attack can behave differently.

¹³We can infer the same positive correlation from the negative correlation between their models’ overfitting level (the difference between training and test accuracy) and the model stealing performance since all of their models have 100% training accuracy.

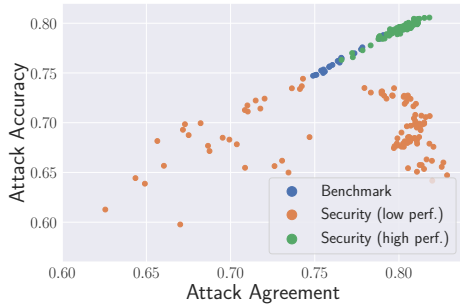


Figure 8: The relationship between the attack agreement and the attack accuracy for model stealing on CIFAR-10 benchmark and security models.

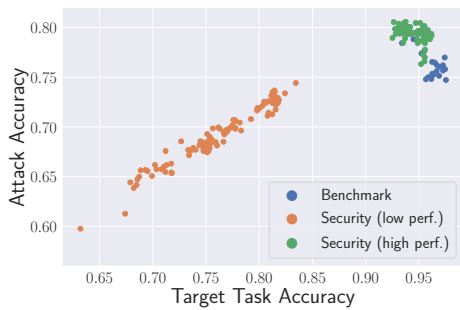


Figure 9: The relationship between the model stealing performance (attack accuracy) and the target model’s task accuracy on CIFAR-10 benchmark and security models.

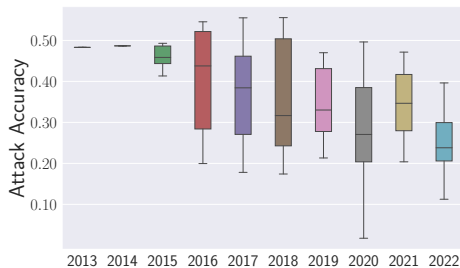


Figure 10: The model stealing performance (attack accuracy) with respect to the publication year.

For future research on the security and privacy of machine learning models, we advise the researchers to use benchmark models when possible or train the target models to high performance.

Metadata. Next, we examine how some metadata relates to the attack performance using public models trained on ImageNet-1k. On the time dimension, Figure 10 shows the model stealing attack is generally less effective on newer models, which may be due to the higher performance of the newer models, see Figure 11. Besides, as the violin plot shows in Figure 12, the distribution of the CV domain is much wider than that of other domains, which means that computer vision conferences are the more popular venue for publishing new

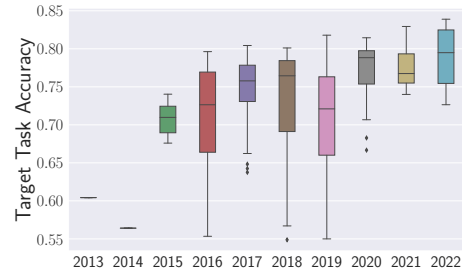


Figure 11: The model’s target task performance with respect to the publication year.

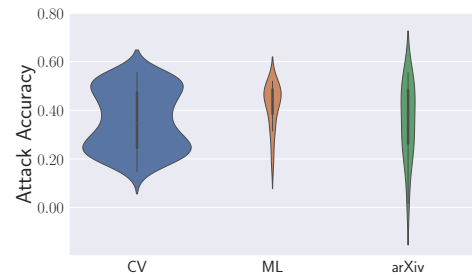


Figure 12: The model stealing performance (attack accuracy) with respect to the conference type.

model architectures. However, the attack shows no significant difference between different types of publishing venues.

4.2 Membership Inference

We next evaluate the performance of membership inference attacks on public models from SECURITYNET.

The Effect of Target Model’s Overfitting Level. Similar to the previous section, we compare the attack performance on benchmark models trained on several different datasets. First of all, we evaluate the membership inference attack performance on benchmark models with respect to their overfitting level. Here, the overfitting level means the difference between training and test accuracy on models’ original datasets [36]. As shown in Figure 13, we make similar observations as in many previous works [36, 50], where membership inference achieves better performance on victim models with a higher overfitting level. We can still find such an association even when the overall attack is not very effective. For instance, the correlation is still present on CIFAR-10 (0.204) and ImageNet-1k (0.247) models, even though the AUC is generally lower than 0.6. This correlation is expected since the attack relies heavily on the different distributions of posterior probabilities between member and non-member samples.

The Effect of Target Model’s Training Set. We also compare the membership inference attack performance from the perspective of the target model’s training set. For models trained on simpler datasets with a small number of classes and sufficient training data, the attack performs poorly, as seen

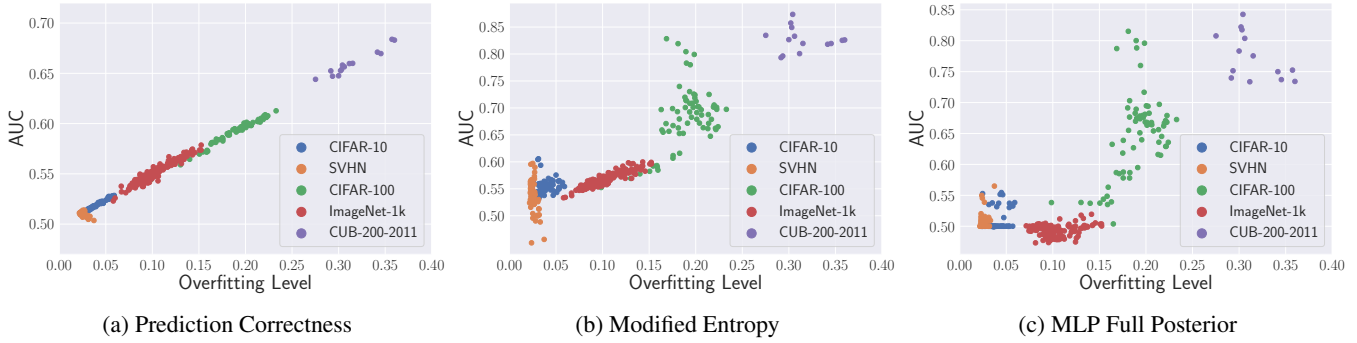


Figure 13: The performance (AUC) of different membership inference attacks with respect to the target model’s overfitting level.

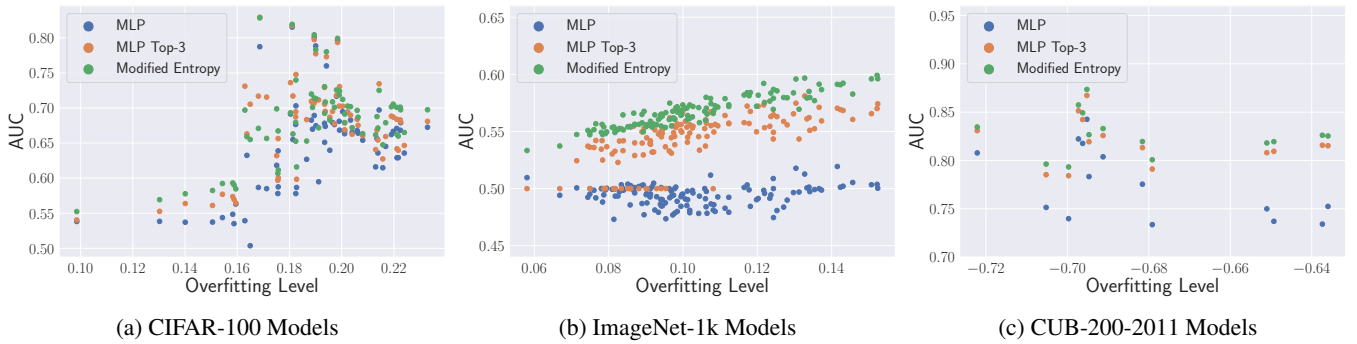


Figure 14: The performance (AUC) of MLP-based and metric-based membership inference attacks with respect to the target model’s overfitting level.

in Figure 13. More concretely, for the SVHN and CIFAR-10 models, the average attack performance is only slightly better than random guessing, with an AUC around 0.565 for the modified entropy attack, and not better than random guessing in most cases for the MLP-based attack. However, many previous works [46, 50] evaluate their attack performance using these two datasets and achieve much higher performance than random guessing, which is quite inconsistent with our observations on benchmark models. This is likely due to the higher prediction accuracy and the lower overfitting level of the benchmark models in SECURITYNET compared to the self-trained ones in previous works.

For more complex datasets, e.g., CIFAR-100 and CUB-200-2011, the attack performance is significantly better than the previous two simple datasets. For instance, the modified entropy attack can achieve higher than 0.8 AUC on almost all CUB-200-2011 models. These results indicate that even these heavily fine-tuned benchmark models cannot achieve the low overfitting level as the ones on simpler datasets.

Interestingly, the membership inference attack does not achieve high performance on the benchmark ImageNet-1k models, even though the overfitting level is not as low as that of the ones trained on simpler datasets. We suspect the large and diverse training set for these benchmark models makes the task of membership inference more difficult. To our knowledge, this observation has not been made previously.

Different Attack Methods’ Effectiveness. As mentioned in Section 3.2, we evaluate three attack methods, namely prediction correctness (metric-based) attack, modified entropy (metric-based) attack, and MLP-based attack. Our experiments demonstrate that the modified entropy attack and MLP-based attack show varying degrees of success and correlation with overfitting level, depending on the training set of the victim model, as previously seen in Figure 13. The prediction correctness attack, unlike the other two, strictly follows the model’s overfitting level across all datasets evaluated,¹⁴ which implies its better transferability to unknown models and datasets. This method, however, achieves only limited success even on models with high overfitting levels and generally performs worse than the other two methods.

We also observe that the MLP-based method yields poor performance on ImageNet-1k models, given the relatively high overfitting level of these models. We suspect that the dimensions of the full posterior inputs commonly used in these models are too large for the MLP-based attack. To accommodate the large input dimension, we select only the top-3 largest posteriors as input to make the attack model more sensitive to important information in the posterior. Different from observations in previous work [46], Figure 14 shows the MLP-based attack improves significantly on ImageNet-1k models and reaches similar performance as the modified

¹⁴SVHN models’ overfitting levels are too low for the attack to be stable.

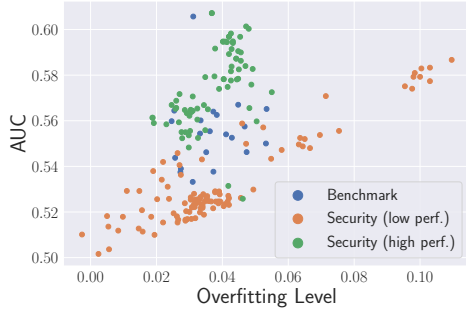


Figure 15: The membership inference performance (AUC) with respect to the target model’s overfitting level on CIFAR-10 benchmark and security models.

entropy attack. The improvement is less prominent in the CIFAR-100 and CUB-200-2011 models, where the target datasets have a smaller number of classes. This means that the attack performance of the developed methods may vary significantly when evaluated on more complex datasets. While it can be resource-intensive to conduct experiments on more complex datasets, researchers can consider using a few trained benchmark models for attack evaluation in the future.

Benchmark vs. Security Models. Similar to our model stealing analysis, we also compare the membership inference attack performance between benchmark and security models. Figure 15 shows the performance of the modified entropy attacks. We first observe that both types of models generally show a similar positive correlation (0.609) with the overfitting level, indicating that the overfitting level, indeed, is the primary indicator of membership vulnerability. Moreover, we find that the two clusters of security models, which have relatively high and low target task performance, respectively (see Figure 2), also react differently to membership inference attacks. The low-performing security models appear less vulnerable to the attack than both the high-performing ones and benchmark models despite having a similar overfitting level. As a result, the models that are not trained adequately on the target tasks can potentially appear to be less vulnerable and lead to underestimated risks in evaluation.

Metadata. For membership inference, we also examine the correlation between the attack performance (modified entropy) and two types of models’ metadata, publishing time and conference type, using ImageNet-1k benchmark models. Figure 16 shows that, unlike model stealing attacks, newer models are not more (or less) secure to membership inference attacks compared to older ones. Meanwhile, in Figure 17, we also do not observe significant performance differences in membership inference on models from different venues.

4.3 Backdoor Detection

We next focus on backdoor detection on the public models. We first emphasize that while it is crucial for the backdoor

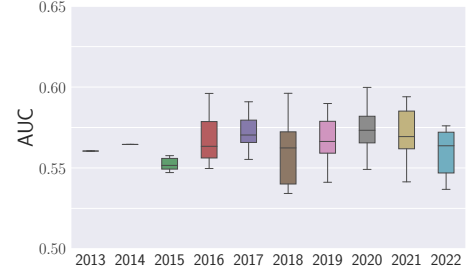


Figure 16: The membership inference performance (AUC) with respect to the publication year.

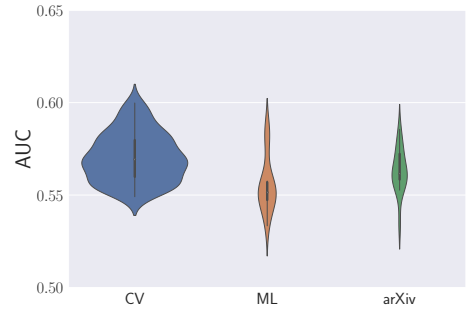


Figure 17: The membership inference performance (AUC) with respect to the conference type.

Table 1: Backdoor detection performance (false positive rate) on CIFAR-10 and SVHN models. Runtime is from CIFAR-10’s ResNet-18 model.

Detection Method	CIFAR-10	SVHN	Runtime
Neural Cleanse	20.9%	13.7%	802.1s
STRIP	0.0%	0.0%	32.1s
NEO	0.0%	0.0%	18.0s

detection techniques to identify the backdoored model accurately, the techniques’ practicality also depends on having an acceptable low false positive rate. Thus, we examine the false positive rate of three widely-used backdoor detections on models from SECURITYNET. Note that since these methods rely on finding easily misclassified labels/images iteratively, the computation cost can be very high. Therefore, we only conduct evaluations on CIFAR-10 and SVHN models. Furthermore, since we aim to examine the false positive rate of these techniques, we only consider benchmark models. The reason is that these benchmark models are (almost) unlikely to contain backdoors.

Model Inspection. For the model inspection method, Neural Cleanse has very high detection rates, specifically 20.9% for CIFAR-10 models and 13.7% for SVHN models, shown in Table 1. To determine whether the detection is false positive, we examine the trigger patterns. The method provides trigger patterns generated through optimization and shows both a trigger image and a mask image of the trigger location.

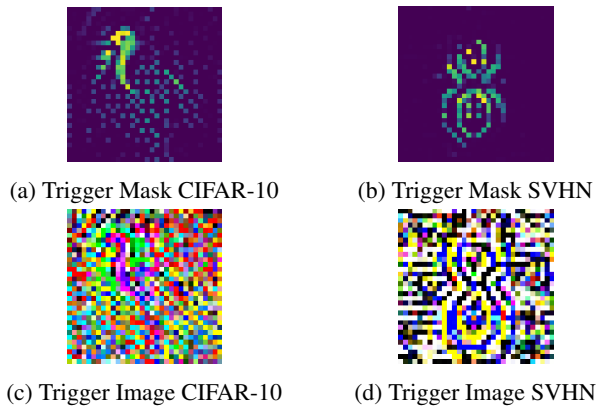


Figure 18: The trigger masks (a and b) and patterns (c and d) generated by the backdoor detection method Neural Cleanse.

The mask area is selected as an outlier through the detection process, i.e., much smaller than others to cause misclassification. Figure 18 shows two examples detected by Neural Cleanse. The examples, however, do not resemble any trigger patterns. More specifically, the mask area is still too large and generally covers the key areas in the current class of images. For example, the SVHN trigger mask clearly shows the digit 8, which means almost all of the area has to be altered to cause misclassification and is, therefore, not a true trigger. The CIFAR-10 example similarly shows the outline of a bird (which is the label of the class). We can confirm that the detected triggers are indeed all false positives. The false positive rates on these public models greatly exceed the results on their experiment models presented in the original work [56]. The generated trigger patterns do help users eliminate the false positive samples easily, yet they require manual intervention.

Besides, since Neural Cleanse iteratively optimizes the trigger pattern and evaluates the change in prediction results, the run time on our GPU cluster (an NVIDIA DGX-A100 server) is at least 25 times longer than the other two methods. The current run-time evaluation actually benefits Neural Cleanse by evaluating a model with a simple architecture (ResNet-18) trained on a small dataset (CIFAR-10). The detection algorithm’s run time will scale with not only the model’s computation complexity but also the number of classes in the dataset. For datasets with more classes, such as ImageNet-1k, the method will become infeasible since the run time will become at least 100 times more than the current setting, even if we assume the time cost for each label’s iteration remains the same. This significant resource requirement can hinder the method’s practicality in the real world.

Input Filtering. For the input filtering methods, i.e., STRIP and NEO, we adopt a subset of the test set for evaluation. Since we choose the images ourselves, we can ensure there is no backdoor, and thus, the method should correctly identify the images as clean. Our experiments show that the two methods are effective in terms of low false positive rates. None of

the models is detected as having backdoors. Noticeably, both methods have detection values that are much lower than their respective thresholds, which further indicates the method is effective in avoiding over-detection. The computation cost is also significantly lower compared to Neural Cleanse and realistically allows real-world deployment.

4.4 Result Summary

Thanks to SECURITYNET, we are able to perform an extensive evaluation for model stealing, membership inference, and backdoor detection on a large set of public models, which, to the best of our knowledge, has not been done before. Our analyses confirm some results from previous works but on a much larger scale, discover some new insights, and show some of the previous results obtained from researchers’ self-trained models can vary on public models.

First of all, we find that the model stealing attack can perform especially poorly on certain datasets, such as CUB-200-2011, in contrast to target models (with the same architecture) trained on other datasets. Using an out-of-distribution auxiliary dataset also does not improve the attack on our public models. Furthermore, we demonstrate that the model stealing performance negatively correlates with the model’s target task performance and is too low to be effective on some modern high-performing models. Unlike previous works [41], we find using a more complex surrogate model does not improve the attack performance. These observations imply that the proposed methods, which perform well under experimental conditions, can become inadequate on public models.

As for membership inference, we make a similar observation, as shown in previous works, that the attack performance positively correlates with the victim model’s overfitting level. Additionally, we find methods that perform well on experiment datasets do not guarantee similar performance on more difficult datasets. In contrast to previous work’s [46] results, the MLP-based attack performs differently on models trained with data that contains a large number of classes (e.g., ImageNet-1k) when using different input methods.

Additionally, for both model stealing and membership inference, we compare the behavior of security models to that of benchmark models. We notice the security models with low target task performance can react drastically differently to both attacks. More concretely, model stealing attack positively correlates with the target model’s performance, and membership inference is less effective given a similar overfitting level. The two observations cannot be made on security models with similar target task performance as benchmark models, and thus, we suspect the training level mainly causes the different attack behavior. We hope to emphasize the necessity of training the target or victim models “properly,” i.e., close to the architecture’s maximum performance on the target task or using public models as target models for evaluation.

Finally, for backdoor detection, we evaluate the methods’

false positive rates on a large number of public models. This allows us to report our observation on the high false positive rate of Neural Cleanse with more confidence, which may be difficult to conclude from just a few test models. The resource requirement or run time of the detection method should also be taken into account when developing detection methods.

5 Related Works

Model Stealing. Several previous works have shown that machine learning models can be vulnerable to model stealing attacks [8, 27, 29, 40, 41, 48, 49, 53, 55, 60]. In general, model stealing attacks focus on either extracting the target model’s parameters [8, 27, 53] or functionalities [27, 29, 41, 48, 49, 60]. Tramèr et al. [53] propose the first model stealing attacks against black-box ML models with prediction API. Orekondy et al. [41] develop Knockoff Nets that can steal the functionality of the given target model and leverage a reinforcement learning approach to improve the query sample efficiency. Model stealing attacks have been applied to different machine learning applications such as BERT-based APIs [29], Graph Neural Networks (GNNs) [49], and Contrastive Learning [48].

Membership Inference. Existing works on membership inference rely heavily on self-trained models to ensure membership information. Shokri et al. [50] develop the first membership inference attacks against ML models. Salem et al. [46] relax such assumptions of [50] by using only one shadow model to establish the attack. Nasr et al. [39] further investigate the membership leakage via the white-box access to the target model. Song and Mittal [51] observe that metric-based attacks can have similar or even better performance than previous attacks that leverage ML-based attack models. Label-only attacks [14, 32] have been proposed for a more difficult scenario where the adversary can only obtain predicted labels instead of the posteriors from the target model.

Backdoor Detection. Chen et al. [12] propose the first backdoor attack and, more specifically, the first targeted backdoor attack using data poisoning. Recently, numerous works have introduced detection methods for both targeted and untargeted backdoored models. Similar to Neural Cleanse [56] examined in this paper, many previous works detect backdoors by inspecting the models [11, 22, 26, 34, 35]. Others such as Cohen et al. [15] detect trigger inputs at inference time like STRIP [18] and NEO [54].

Public Model Analysis and Evaluations. There is not much work on analyzing public models’ behaviors, especially from the security and privacy angle. Gavrikov and Keuper [19] analyze the properties of the distribution of 3x3 convolution filter kernels from hundreds of trained models. Schürholt et al. [47] present a dataset of 50,360 systematically generated neural network models for future model property research. This collection of trained models focuses more on providing diverse training trajectories through different combinations of

hyperparameters, and thus, models do not necessarily reflect the ones publicly available online.

Large-Scale Evaluation of ML Security and Privacy. Another related topic is the measurement study on the security and privacy risks of machine learning models. Liu et al. [36] examine four inference attacks using five model architectures trained on four datasets. Pang et al. [42] develop TrojanZoo, an open-source platform for evaluating backdoor attacks/defenses. For evasion attacks, a selection of previous works [16, 33, 43] propose security analyses and benchmark platforms for generating and defending adversarial examples. These works, however, aim at developing the toolbox for future risk assessment but do not include evaluation analyses on a large set of public models.

6 Conclusion

In this paper, we collect and annotate an extensive database of public models, namely SECURITYNET, for privacy and security research in machine learning. We examine these public models with model stealing, membership inference, and backdoor detection. Compared to the results in previous works obtained from researchers’ self-trained models, we discover some new insights on ML attacks/defenses with SECURITYNET. We will share SECURITYNET with the community and recommend future researchers include experiments on public models to demonstrate their methods’ efficacy.

Acknowledgments. We thank all anonymous reviewers for their constructive comments. This work is partially funded by the European Health and Digital Executive Agency (HADEA) within the project “Understanding the individual host response against Hepatitis D Virus to develop a personalized approach for the management of hepatitis D” (D-Solve) (grant agreement number 101057917).

References

- [1] <https://www.cs.toronto.edu/~kriz/cifar.html>.
- [2] <http://ufldl.stanford.edu/housenumbers/>.
- [3] <https://paperswithcode.com/>.
- [4] <https://www.kaggle.com/>.
- [5] <https://github.com/>.
- [6] Maksym Andriushchenko and Nicolas Flammarion. Understanding and Improving Fast Adversarial Training. In *Annual Conference on Neural Information Processing Systems (NeurIPS)*, page 16048–16059. NeurIPS, 2020.
- [7] Wieland Brendel and Matthias Bethge. Approximating CNNs with Bag-of-local-Features models works surprisingly well on ImageNet. In *International Conference on Learning Representations (ICLR)*, 2019.
- [8] Nicholas Carlini, Matthew Jagielski, and Ilya Mironov. Cryptanalytic Extraction of Neural Network Models. In *Annual International Cryptology Conference (CRYPTO)*, pages 189–218. Springer, 2020.
- [9] Kathy Charmaz. *Constructing Grounded Theory: A Practical Guide Through Qualitative Analysis*. SAGE Publications Inc, 2006.
- [10] Dingfan Chen, Ning Yu, Yang Zhang, and Mario Fritz. GAN-Leaks: A Taxonomy of Membership Inference Attacks against Generative Models. In *ACM SIGSAC Conference on Computer and Communications Security (CCS)*, pages 343–362. ACM, 2020.
- [11] Huili Chen, Cheng Fu, Jishen Zhao, and Farinaz Koushanfar. DeepInspect: A Black-box Trojan Detection and Mitigation Framework for Deep Neural Networks. In *International Joint Conferences on Artificial Intelligence (IJCAI)*, pages 4658–4664. IJCAI, 2019.
- [12] Xinyun Chen, Chang Liu, Bo Li, Kimberly Lu, and Dawn Song. Targeted Backdoor Attacks on Deep Learning Systems Using Data Poisoning. *CoRR abs/1712.05526*, 2017.
- [13] Yufei Chen, Chao Shen, Yun Shen, Cong Wang, and Yang Zhang. Amplifying Membership Exposure via Data Poisoning. In *Annual Conference on Neural Information Processing Systems (NeurIPS)*. NeurIPS, 2022.
- [14] Christopher A. Choquette Choo, Florian Tramèr, Nicholas Carlini, and Nicolas Papernot. Label-Only Membership Inference Attacks. In *International Conference on Machine Learning (ICML)*, pages 1964–1974. PMLR, 2021.
- [15] Jeremy M. Cohen, Elan Rosenfeld, and J. Zico Kolter. Certified Adversarial Robustness via Randomized Smoothing. In *International Conference on Machine Learning (ICML)*, pages 1310–1320. PMLR, 2019.
- [16] Francesco Croce, Maksym Andriushchenko, Vikash Sehwag, Edoardo Debenedetti, Nicolas Flammarion, Mung Chiang, Prateek Mittal, and Matthias Hein. Robust-Bench: a standardized adversarial robustness benchmark. In *Annual Conference on Neural Information Processing Systems (NeurIPS)*. NeurIPS, 2021.
- [17] Jia Deng, Wei Dong, Richard Socher, Li-Jia Li, Kai Li, and Li Fei-Fei. ImageNet: A large-scale hierarchical image database. In *IEEE Conference on Computer Vision and Pattern Recognition (CVPR)*, pages 248–255. IEEE, 2009.
- [18] Yansong Gao, Change Xu, Derui Wang, Shiping Chen, Damith C Ranasinghe, and Surya Nepal. STRIP: A Defence Against Trojan Attacks on Deep Neural Networks. In *Annual Computer Security Applications Conference (ACSAC)*, pages 113–125. ACM, 2019.
- [19] Paul Gavrikov and Janis Keuper. CNN Filter DB: An Empirical Investigation of Trained Convolutional Filters. In *IEEE Conference on Computer Vision and Pattern Recognition (CVPR)*, pages 19044–19054. IEEE, 2022.
- [20] Ian Goodfellow, Jonathon Shlens, and Christian Szegedy. Explaining and Harnessing Adversarial Examples. In *International Conference on Learning Representations (ICLR)*, 2015.
- [21] Tianyu Gu, Brendan Dolan-Gavitt, and Siddharth Garg. Badnets: Identifying Vulnerabilities in the Machine Learning Model Supply Chain. *CoRR abs/1708.06733*, 2017.
- [22] Wenbo Guo, Lun Wang, Xinyu Xing, Min Du, and Dawn Song. TABOR: A Highly Accurate Approach to Inspecting and Restoring Trojan Backdoors in AI Systems. *CoRR abs/1908.01763*, 2019.
- [23] Kaiming He, Xiangyu Zhang, Shaoqing Ren, and Jian Sun. Deep Residual Learning for Image Recognition. In *IEEE Conference on Computer Vision and Pattern Recognition (CVPR)*, pages 770–778. IEEE, 2016.
- [24] Lei Hsiung, Yun-Yun Tsai, Pin-Yu Chen, and Tsung-Yi Ho. CARBEN: Composite Adversarial Robustness Benchmark. In *International Joint Conferences on Artificial Intelligence (IJCAI)*, pages 5908–5911. IJCAI, 2022.
- [25] Aoting Hu, Renjie Xie, Zhigang Lu, Aiqun Hu, and Minhui Xue. TableGAN-MCA: Evaluating Membership Collisions of GAN-Synthesized Tabular Data Releasing.

- In *ACM SIGSAC Conference on Computer and Communications Security (CCS)*, pages 2096–2112. ACM, 2021.
- [26] Xijie Huang, Moustafa Alzantot, and Mani B. Srivastava. NeuronInspect: Detecting Backdoors in Neural Networks via Output Explanations. *CoRR abs/1911.07399*, 2019.
- [27] Matthew Jagielski, Nicholas Carlini, David Berthelot, Alex Kurakin, and Nicolas Papernot. High Accuracy and High Fidelity Extraction of Neural Networks. In *USENIX Security Symposium (USENIX Security)*, pages 1345–1362. USENIX, 2020.
- [28] Jinyuan Jia, Ahmed Salem, Michael Backes, Yang Zhang, and Neil Zhenqiang Gong. MemGuard: Defending against Black-Box Membership Inference Attacks via Adversarial Examples. In *ACM SIGSAC Conference on Computer and Communications Security (CCS)*, pages 259–274. ACM, 2019.
- [29] Kalpesh Krishna, Gaurav Singh Tomar, Ankur P. Parikh, Nicolas Papernot, and Mohit Iyyer. Thieves on Sesame Street! Model Extraction of BERT-based APIs. In *International Conference on Learning Representations (ICLR)*, 2020.
- [30] Alex Krizhevsky, Ilya Sutskever, and Geoffrey E. Hinton. ImageNet Classification with Deep Convolutional Neural Networks. In *Annual Conference on Neural Information Processing Systems (NIPS)*, pages 1106–1114. NIPS, 2012.
- [31] Jonathan Lazar, Jinjuan Feng, and Harry Hochheiser. *Research Methods in Human-Computer Interaction, 2nd Edition*. Morgan Kaufmann, 2017.
- [32] Zheng Li and Yang Zhang. Membership Leakage in Label-Only Exposures. In *ACM SIGSAC Conference on Computer and Communications Security (CCS)*, pages 880–895. ACM, 2021.
- [33] Xiang Ling, Shouling Ji, Jiayu Zou, Jiannan Wang, Chunming Wu, Bo Li, and Ting Wang. DEEPSEC: A Uniform Platform for Security Analysis of Deep Learning Model. In *IEEE Symposium on Security and Privacy (S&P)*, pages 673–690. IEEE, 2019.
- [34] Kang Liu, Brendan Dolan-Gavitt, and Siddharth Garg. Fine-Pruning: Defending Against Backdooring Attacks on Deep Neural Networks. In *Research in Attacks, Intrusions, and Defenses (RAID)*, pages 273–294. Springer, 2018.
- [35] Yingqi Liu, Wen-Chuan Lee, Guan hong Tao, Shiqing Ma, Yousra Aafer, and Xiangyu Zhang. ABS: Scanning Neural Networks for Back-Doors by Artificial Brain Stimulation. In *ACM SIGSAC Conference on Computer and Communications Security (CCS)*, pages 1265–1282. ACM, 2019.
- [36] Yugeng Liu, Rui Wen, Xinlei He, Ahmed Salem, Zhikun Zhang, Michael Backes, Emiliano De Cristofaro, Mario Fritz, and Yang Zhang. ML-Doctor: Holistic Risk Assessment of Inference Attacks Against Machine Learning Models. In *USENIX Security Symposium (USENIX Security)*, pages 4525–4542. USENIX, 2022.
- [37] Zhuang Liu, Hanzi Mao, Chao-Yuan Wu, Christoph Feichtenhofer, Trevor Darrell, and Saining Xie. A ConvNet for the 2020s. In *IEEE Conference on Computer Vision and Pattern Recognition (CVPR)*, pages 11966–11976. IEEE, 2022.
- [38] Milad Nasr, Reza Shokri, and Amir Houmansadr. Machine Learning with Membership Privacy using Adversarial Regularization. In *ACM SIGSAC Conference on Computer and Communications Security (CCS)*, pages 634–646. ACM, 2018.
- [39] Milad Nasr, Reza Shokri, and Amir Houmansadr. Comprehensive Privacy Analysis of Deep Learning: Passive and Active White-box Inference Attacks against Centralized and Federated Learning. In *IEEE Symposium on Security and Privacy (S&P)*, pages 1021–1035. IEEE, 2019.
- [40] Seong Joon Oh, Max Augustin, Bernt Schiele, and Mario Fritz. Towards Reverse-Engineering Black-Box Neural Networks. In *International Conference on Learning Representations (ICLR)*, 2018.
- [41] Tribhuvanesh Orekondy, Bernt Schiele, and Mario Fritz. Knockoff Nets: Stealing Functionality of Black-Box Models. In *IEEE Conference on Computer Vision and Pattern Recognition (CVPR)*, pages 4954–4963. IEEE, 2019.
- [42] Ren Pang, Zheng Zhang, Xiangshan Gao, Zhaohan Xi, Shouling Ji, Peng Cheng, and Ting Wang. TROJAN-ZOO: Everything You Ever Wanted to Know about Neural Backdoors (But Were Afraid to Ask). *CoRR abs/2012.09302*, 2020.
- [43] Nicolas Papernot, Fartash Faghri, Nicholas Carlini, Ian Goodfellow, Reuben Feinman, Alexey Kurakin, Cihang Xie, Yash Sharma, Tom Brown, Aurko Roy, Alexander Matyasko, Vahid Behzadan, Karen Hambardzumyan, Zhishuai Zhang, Yi-Lin Juang, Zhi Li, Ryan Sheatsley, Abhibhav Garg, Jonathan Uesato, Willi Gierke, Yinpeng Dong, David Berthelot, Paul Hendricks, Jonas Rauber, Rujun Long, and Patrick McDaniel. Technical Report on the CleverHans v2.1.0 Adversarial Examples Library. *CoRR abs/1610.00768*, 2018.

- [44] Apostolos Pyrgelis, Carmela Troncoso, and Emiliano De Cristofaro. Knock Knock, Who's There? Membership Inference on Aggregate Location Data. In *Network and Distributed System Security Symposium (NDSS)*. Internet Society, 2018.
- [45] Ilija Radosavovic, Raj Prateek Kosaraju, Ross Girshick, Kaiming He, and Piotr Dollár. Designing Network Design Spaces. In *IEEE Conference on Computer Vision and Pattern Recognition (CVPR)*, pages 10428–10436. IEEE, 2020.
- [46] Ahmed Salem, Yang Zhang, Mathias Humbert, Pascal Berrang, Mario Fritz, and Michael Backes. ML-Leaks: Model and Data Independent Membership Inference Attacks and Defenses on Machine Learning Models. In *Network and Distributed System Security Symposium (NDSS)*. Internet Society, 2019.
- [47] Konstantin Schürholt, Diyar Taskiran, Boris Knyazev, Xavier Giró-i-Nieto, and Damian Borth. Model Zoos: A Dataset of Diverse Populations of Neural Network Models. *CoRR abs/2209.14764*, 2022.
- [48] Zeyang Sha, Xinlei He, Ning Yu, Michael Backes, and Yang Zhang. Can't Steal? Cont-Steal! Contrastive Stealing Attacks Against Image Encoders. In *IEEE Conference on Computer Vision and Pattern Recognition (CVPR)*. IEEE, 2023.
- [49] Yun Shen, Xinlei He, Yufei Han, and Yang Zhang. Model Stealing Attacks Against Inductive Graph Neural Networks. In *IEEE Symposium on Security and Privacy (S&P)*, pages 1175–1192. IEEE, 2022.
- [50] Reza Shokri, Marco Stronati, Congzheng Song, and Vitaly Shmatikov. Membership Inference Attacks Against Machine Learning Models. In *IEEE Symposium on Security and Privacy (S&P)*, pages 3–18. IEEE, 2017.
- [51] Liwei Song and Prateek Mittal. Systematic Evaluation of Privacy Risks of Machine Learning Models. In *USENIX Security Symposium (USENIX Security)*. USENIX, 2021.
- [52] Liwei Song, Reza Shokri, and Prateek Mittal. Privacy Risks of Securing Machine Learning Models against Adversarial Examples. In *ACM SIGSAC Conference on Computer and Communications Security (CCS)*, pages 241–257. ACM, 2019.
- [53] Florian Tramèr, Fan Zhang, Ari Juels, Michael K. Reiter, and Thomas Ristenpart. Stealing Machine Learning Models via Prediction APIs. In *USENIX Security Symposium (USENIX Security)*, pages 601–618. USENIX, 2016.
- [54] Sakshi Udeshi, Shanshan Peng, Gerald Woo, Lionell Loh, Louth Rawshan, and Sudipta Chattopadhyay. Model Agnostic Defence Against Backdoor Attacks in Machine Learning. *IEEE Transactions on Reliability*, 2022.
- [55] Binghui Wang and Neil Zhenqiang Gong. Stealing Hyperparameters in Machine Learning. In *IEEE Symposium on Security and Privacy (S&P)*, pages 36–52. IEEE, 2018.
- [56] Bolun Wang, Yuanshun Yao, Shawn Shan, Huiying Li, Bimal Viswanath, Haitao Zheng, and Ben Y. Zhao. Neural Cleanse: Identifying and Mitigating Backdoor Attacks in Neural Networks. In *IEEE Symposium on Security and Privacy (S&P)*, pages 707–723. IEEE, 2019.
- [57] Jiayuan Ye, Aadyaa Maddi, Sasi Kumar Murakonda, Vincent Bindschaedler, and Reza Shokri. Enhanced Membership Inference Attacks against Machine Learning Models. In *ACM SIGSAC Conference on Computer and Communications Security (CCS)*, pages 3093–3106. ACM, 2022.
- [58] Fisher Yu, Dequan Wang, Evan Shelhamer, and Trevor Darrell. Deep Layer Aggregation. In *IEEE Conference on Computer Vision and Pattern Recognition (CVPR)*, pages 2403–2412. IEEE, 2018.
- [59] Sergey Zagoruyko and Nikos Komodakis. Wide Residual Networks. In *Proceedings of the British Machine Vision Conference (BMVC)*. BMVA Press, 2016.
- [60] Boyang Zhang, Xinlei He, Yun Shen, Tianhao Wang, and Yang Zhang. A Plot is Worth a Thousand Words: Model Information Stealing Attacks via Scientific Plots. In *USENIX Security Symposium (USENIX Security)*. USENIX, 2023.
- [61] Minxing Zhang, Zhaochun Ren, Zihan Wang, Pengjie Ren, Zhumin Chen, Pengfei Hu, and Yang Zhang. Membership Inference Attacks Against Recommender Systems. In *ACM SIGSAC Conference on Computer and Communications Security (CCS)*, pages 864–879. ACM, 2021.

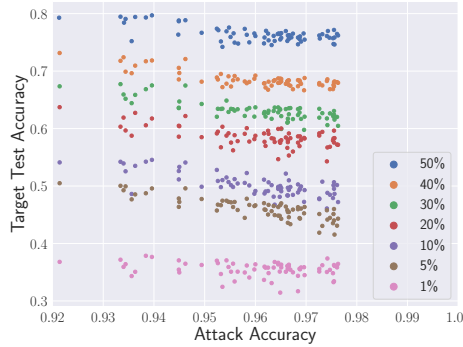


Figure 19: The relationship between the target task accuracy and the attack accuracy for model stealing on CIFAR-10 models when using different query budgets.

Appendix

A Annotating SECURITYNET

To annotate relevant information about the models in SECURITYNET, we utilize a two-step iterative coding process, which has been widely adopted in various fields such as usable security, social computing, and psychology [9, 31]. Concretely, 5 researchers first traverse all models and their relevant information and independently assign initial codes about the categories. They then work together to discuss the initial codes and their interconnections. Disagreement is solved through discussion and a majority vote. After agreeing on a final codebook (see Table 2), they code the entire database again. Our results show high inter-coder agreement (Cohen’s kappa = 0.915).

B Model Stealing Query Budget

When using the partial training set to steal target models, we assume the attacker has 50% of the original training data. We also evaluate how different query budget affects the attack performance on CIFAR-10 models. Similar to previous works [41, 53], we find positive correlations between the size of training data and attack performance, as shown in Figure 19.

C Evasion Attacks

Although evasion attacks is not the focus of this paper, we still include some baseline results for the benefit of future researchers in this domain. We examine the standard FGSM [20] attack in white-box and black-box settings. In the white-box setting, the adversary has full access to the model and generates adversarial noise directly. While in the black-box setting, the adversary cannot obtain the gradient

from the target model directly but uses an auxiliary model (ResNet-18 trained on the same data) to generate the noise.

We present the accuracy drop on the target task in three different noise levels with epsilon at 0.01, 0.03, and 0.1 in Figure 20. We find there is a negative correlation between the attack effectiveness and the model’s original target accuracy (e.g., the Pearson correlation coefficient is -0.491 on ImageNet-1k models). The method becomes ineffective on large models, even in the white-box setting with relatively large noise. For instance, the CIFAR-10 ResNet-1202 model only suffers an accuracy drop of 0.161 in the white-box setting with epsilon 0.1, compared to the much larger 0.491 that of ResNet-20 from the same model family. Under the black-box setting, shown in Figure 21, the effectiveness is very limited, but the negative correlation is still present. At a low noise level (epsilon 0.01), the accuracy drop of the attack is generally lower than 0.05. The negative correlation implies that the method that works on smaller models does not necessarily work as effectively on larger ones. Future researchers should consider selecting a few public models in SECURITYNET that are particularly ineffective with baseline attacks to demonstrate the effectiveness and improvement of the proposed method.

D Limitation

Our project is not without some limitations. When searching for models from academic papers, we focus on papers from top-tier conferences and thus potentially omit some models. We believe models from top conferences are more likely to be adopted by the community. Our analysis is also conducted with PyTorch models only. In later updates, we hope to include models from other platforms, such as TensorFlow. Given the large number of models, we still believe the result is representative even with these biases.

Using pre-trained models can limit the evaluation of some attacks against ML models. To ensure thorough analysis, membership inference attacks usually require control over the training process. However, we advocate for including a few case studies with public models to show that the proposed methods indeed perform similarly on larger models.

Table 2: The final codebook for SECURITYNET annotation.

Code	Description	Examples
Task Type	The type of tasks the model designed to perform	classification, detection, segmentation
Dataset	The dataset used to train the model	CIFAR-10, ImageNet-1k
Topic Category	The types of subjects in the given dataset	natural scenery, medical scans, satellite images
Training Set Size	The number of samples in the training data	50000, 5994, 1281167
Number of Classes	Number of classes in the dataset	10, 200, 1000
Input Image Dimensions	The image size and number of channels	28×28×1, 32×32×3, 224×224×3
Publishing Venues	The conference or journal where the paper that first introduced the model is published (if applicable)	CVPR, ICCV, NeurIPS
Venue Type	The type/topic of the conference/journal	computer vision, machine learning, preprint
Publishing Year	The year of the publication for the paper (models can be released online later)	2013, 2017, 2020
Number of Authors	The number of authors appeared on the paper that published the given model architecture	2, 3, 8
Affiliation	The author's affiliation	Stanford University, Google, Max Planck Institute
Affiliation Type	The types of affiliation	Companies, Research Institutions, Universities
Country	The country of where the authors' affiliations are established	USA, Germany, China, UK

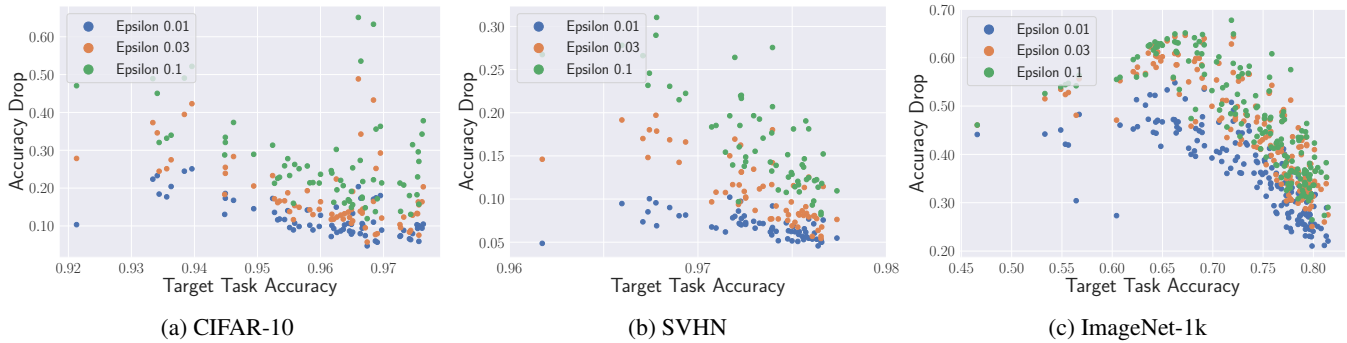


Figure 20: The relationship between the evasion attack effectiveness (target task accuracy drop) and the target model's task accuracy across various benchmark models under white-box setting with different epsilons.

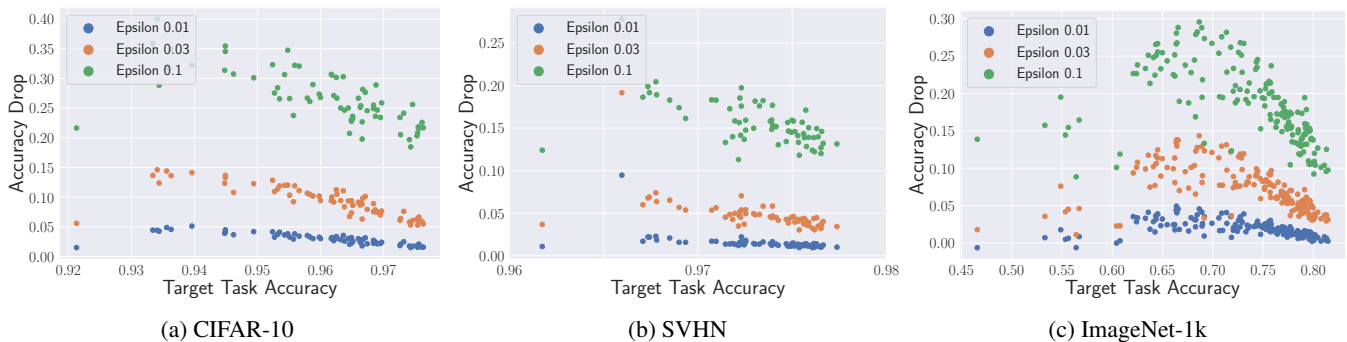


Figure 21: The relationship between the evasion attack effectiveness and the target model's task accuracy across various benchmark models under the black-box setting with different epsilons.