

**JN0-103 ACCURATE DUMPS  
PREPARED BY SK\_VMX~ ON TELEGRAM.**

## Exam A

### QUESTION 1

Which command verifies configuration syntax without applying the changes?

- A. `commit confirmed`
- B. `commit check`
- C. `commit comment`
- D. `commit and-quit`

### QUESTION 2

By default, which character indicates the UNIX shell prompt?

- A. #
- B. %
- C. \$
- D. >

### QUESTION 3

You are considering an upgrade from 19.1R1 and want to ensure that only bug fixes are included.

Which two software versions should you consider in this situation? (Choose two.)

- A. 19.3R1-S1
- B. 19.3R2
- C. 19.1R3
- D. 19.1R1-S2

### QUESTION 4

Which two statements are true about static routes in the Junos OS? (Choose two.)

- A. Static routes remain in the routing table until you remove them or until they become inactive.
- B. Static routes must have a next hop defined.
- C. Static routes are learned by neighboring devices and added to their routing tables.
- D. Static routes are defined at the `[edit routing-instances]` hierarchy.

### QUESTION 5

When multiple users are editing the configuration on a Junos device, what is the default behavior when a user issues a `commit` command?

- A. All valid configuration changes made by all users will take effect.
- B. The user's configuration changes are committed; other users' configuration changes are still pending.
- C. The user will receive an error message disallowing a commit of the configuration.
- D. The user's configuration changes are committed; other users will be exited from configuration mode.

### QUESTION 6

Routing policies contain which two types of statements? (Choose two.)

- A. then
- B. from
- C. default
- D. and

### QUESTION 7

You are connected to your Junos device using an SSH connection to the `fxp0` interface. No other interfaces are currently configured beyond their default settings. You commit a configuration that makes the `fxp0` interface unreachable from your management network.

In this scenario, how would you re-establish communication with the device?

- A. Connect to the console of the device.
- B. Establish an SSH connection to the loopback interface.
- C. Power off and power on the device.
- D. Unplug the network cable and plug it back in.

### QUESTION 8

| Specific System Log Message Information |   |
|---|---|
| Name                                    | CHASSISD_TERM_SIGNAL  |
| Message                                 | Received SIGTERM request, shutting down   |
| Help                                    | chassisd received termination signal  |
| Desc                                    | The chassis process (chassisd) received the SIGTERM signal, indicating that it should terminate. It began the procedure for clean shutdown and exit, but possibly restarted automatically after existing. |
| Type                                    | Event: This message reports an event, not an error  |
| Sev                                     | Info  |
| Facility                                | LOG_DAEMON  |
| Platforms Supported                     | Common Junos  |

Referring to the exhibit, which command will cause this event message?

- A. `request system halt`
- B. `request system logout`
- C. `request system recover`
- D. `request system commit`

### QUESTION 9

What are two benefits realized by the disaggregated Junos OS? (Choose two.)

- A. There is increased flexibility to use different control plane versions.
- B. The Junos VM becomes hardware-independent and can be deployed on any hypervisor without modification.
- C. The architecture facilitates programmability through provisioning the control plane, the data path, and the platform APIs.
- D. The platform drivers and forwarding engine are removed from the control plane to increase performance.

### QUESTION 10

Which two features are implemented on the Packet Forwarding Engine? (Choose two.)

- A. firewall filters
- B. chassis management
- C. class of service
- D. routing protocol updates

### QUESTION 11

```
user@router> monitor traffic interface et-0/0/1.0 matching arp count 10
```

Referring to the exhibit, which parameter at the end of the command would provide information for troubleshooting purposes?

- A. no-timestamp
- B. extensive
- C. print-ascii
- D. no-resolve

### QUESTION 12

Which parameter of the `monitor traffic` command should be used with caution when considering storage space on a Junos device?

- A. write-file
- B. layer2-headers
- C. extensive
- D. detail

### QUESTION 13

Which two commands would you use to reset the candidate configuration to the active configuration? (Choose two.)

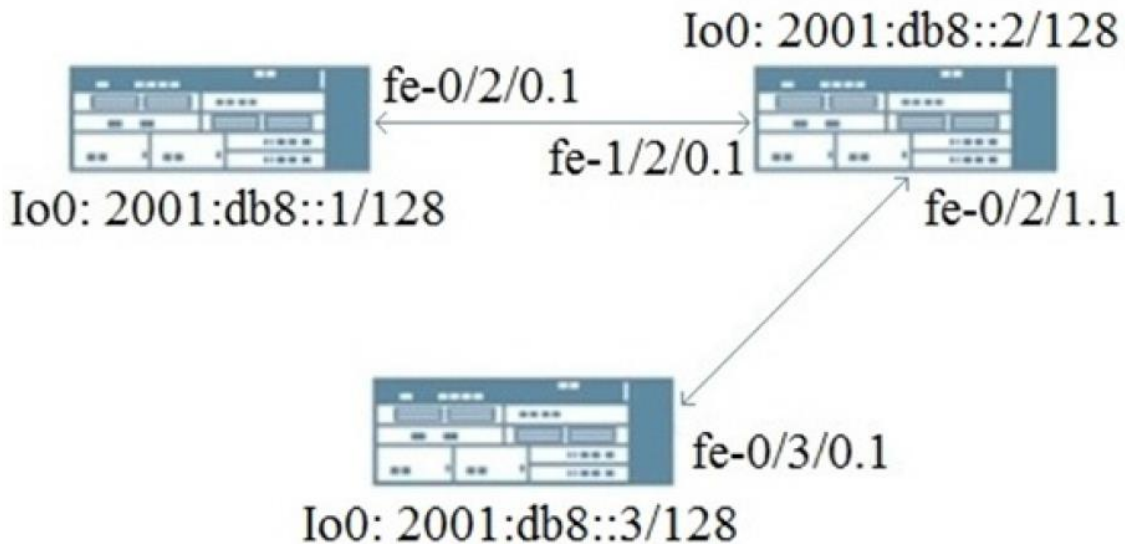
- A. rollback 0
- B. rollback 2
- C. rollback 1
- D. rollback

**QUESTION 14**

Which two statements are true regarding dynamic routing? (Choose two.)

- A. Participating devices dynamically learn routing information from each other.
- B. Dynamic routing requires more administrative overhead than static routing.
- C. Dynamic routing allows a device to automatically reroute traffic around a failure.
- D. Dynamic routing is used when absolute control of routing parameters is necessary.

**QUESTION 15**



Referring to the exhibit, which dynamic routing protocol would be used for this topology?

- A. IGMPv3
- B. RIPng
- C. RIP
- D. OSPFv2

### QUESTION 16

```
user@router> show route forwarding-table
Routing table: default.inet
Internet:
Enabled protocols: Bridging,
Destination      Type  RtRef  Next hop      Type  Index   NhRef  Netif
default          perm   0        
                rjct   36      1
0.0.0.0/32       perm   0        
                dscd   34      1
10.5.0.0/16      user   0  10.102.70.254 ucst   355     18  fxp0.0
10.10.0.0/16     user   0  10.102.70.254 ucst   355     18  fxp0.0
10.12.14.0/24    intf   0        
                rslv   589     1   ge-2/0/0.0
10.12.14.0/32    dest   0  10.12.14.0    recv   587     1   ge-2/0/0.0
10.12.14.254/32 intf   0  10.12.14.254 locl   588     2
10.12.14.254/32 dest   0  10.12.14.254 locl   588     2
10.12.14.255/32 dest   0  10.12.14.255 bcst   586     1   ge-2/0/0.0
10.13.10.0/23   user   0  10.102.70.254 ucst   355     18  fxp0.0
10.84.0.0/16    user   0  10.102.70.254 ucst   355     18  fxp0.0
10.102.70.0/24  intf   0        
                rslv   354     1   fxp0.0
224.0.0.0/4      perm   0        
                mdsc   35      1
224.0.0.1/32    perm   0  224.0.0.1    mcst   31      2
224.0.0.5/32    user   0  224.0.0.5    mcst   31      2
255.255.255.255/32 perm   0        
                bcst   32      1
```

Referring to the exhibit, what happens to a packet that has a destination address of 172.17.0.1?

- A. The packet is forwarded to the next hop of the management network.
- B. The packet is rejected and an ICMP network unreachable message is sent to the source address.
- C. The packet is silently discarded.
- D. The packet is forwarded to the next hop defined in the default route.

### QUESTION 17

You notice that the terms in your firewall filter are not in the correct order.

What would solve this problem?

- A. Use the `next term` action to force an evaluation of the next term.
- B. Use the `insert` command to reorder the terms within the filter.
- C. Use the `count` parameter to ensure that the terms are evaluated correctly.
- D. Use the `reject` action to change the action of the filter.

### QUESTION 18

Which command will show files stored in the /var/home/lab directory?

- A. lab@router> file show
- B. lab@router> file list
- C. [edit]  
lab@router# rollback ?
- D. lab@router> ls

### QUESTION 19

Which two statements are true about the default behavior of Junos routing policies? (Choose two.)

- A. Routing policies control the flow of routing information going to and from the forwarding table.
- B. Routing policies control the flow of routing information going to and from the routing table.
- C. Routing policies can export active and inactive routes.
- D. Routing policies can export only active routes.

### QUESTION 20

How does the PFE determine how to forward transit traffic?

- A. The PFE determines network destinations itself based on the RE's routing table.
- B. The PFE uses the forwarding table provided by the RE.
- C. The PFE performs a destination lookup based on its own routing table.
- D. The PFE uses the routing table provided by the RE.

### QUESTION 21

```
user@router> show route protocol static

inet.0: 7 destinations, 8 routes (7 active, 0 holddown, 0 hidden)
+ = Active Route, - = Last Active, * = Both

192.168.47.0/24    *[Static/5] 02:02:03
                  > to 172.16.1.2 via ge-1/2/0.0
                  [Static/25] 01:58:21
                  > to 192.168.2.2 via fe-1/2/1.2
```

Referring to the exhibit, what information is provided about the route to 192.168.47.0/24? (Choose two.)

- A. There are two active routes to 192.168.47.0/24.
- B. There is a single active route to 192.168.47.0/24.
- C. There are two next hops available to 192.168.47.0/24.
- D. There is a single next hop available to 192.168.47.0/24.

### QUESTION 22

Depending on the device type, Junos is built upon which two OS kernels? (Choose two.)

- A. NetBSD
- B. FreeBSD
- C. Linux
- D. OpenBSD

### QUESTION 23

Which two statements describe PFE functions? (Choose two.)

- A. The PFE stores a local copy of the Layer 2 and Layer 3 forwarding tables.
- B. The PFE provides access to the CLI and J-Web.
- C. The PFE stores the master copy of the Layer 2 and Layer 3 forwarding tables.
- D. The PFE implements rate limiting using policers.

### QUESTION 24

```
user@router> show interfaces terse | match ge-
ge-0/0/0          up      up
ge-0/0/1          up      up
ge-0/0/1.0        up      up    inet    172.26.133.105/24
ge-0/0/2          up      up
ge-0/0/2.0        down    up    inet    172.40.1.2/24
```

Referring to the exhibit, which logical interface is able to forward IP traffic?

- A. ge-0/0/2.0
- B. ge-0/0/0
- C. ge-0/0/1.0
- D. ge-0/0/2

### QUESTION 25

In your configuration, an interface contains multiple IP addresses belonging to the same subnet. You want to identify the IP address to use for packets sent to hosts on the same subnet.

Which parameter would you use to accomplish this task?

- A. patch
- B. primary
- C. preferred
- D. relative

### QUESTION 26

What are two modes of unicast reverse path forwarding? (Choose two.)

A. strict

B. high

C. low

D. loose

### QUESTION 27

You successfully established a BGP session with a peer, but do not see any routes learned from the peer.

What would cause this problem?

A. A routing policy is blocking BGP from learning the routes.

B. A security policy is blocking BGP from learning the routes.

C. Unicast reverse-path-forwarding is blocking BGP from learning the routes.

D. The firewall filter is blocking BGP from learning the routes.

### QUESTION 28

What are two services performed by the Packet Forwarding Engine? (Choose two.)

A. to process transit traffic

B. to handle processes that control the device's interfaces

C. to maintain the routing tables

D. to implement stateless firewall filtering

### QUESTION 29

Which command displays all IPv4 routes in the default routing instance?

A. `show route table inet.1`

B. `show route table inet6.0`

C. `show route table inet.2`

D. `show route table inet.0`

**QUESTION 30**

Which statement is true about the `orlonger` route-filter match type?

- A. All routes within the specified prefix that are longer than or equal to the given prefix are considered a match.
- B. All routes within the specified prefix that are longer or equal to the given prefix up to a defined acceptable prefix length are considered a match.
- C. All routes within the specified prefix that are longer than the given prefix up to a defined acceptable prefix length are considered a match.
- D. All routes within the specified prefix that are longer than the given prefix are considered a match.

**QUESTION 31**

What are two configurable physical interface properties? (Choose two.)

- A. protocol family
- B. address
- C. MTU
- D. link mode

**QUESTION 32**

What is the maximum number of configurations, by default, that are recoverable using the `rollback` command?

- A. 50
- B. 25
- C. 100
- D. 75

**QUESTION 33**

What is the purpose of the `load merge` command?

- A. to look for a replace tag in the configuration you load
- B. to combine the current configuration with the configuration you load
- C. to add or delete variables from the configuration based on the contents of a specified patch file
- D. to completely overwrite the current configuration with the configuration you load

### QUESTION 34

What is the purpose of the `discard` action of a firewall filter?

- A. The system silently drops the packet.
- B. The system evaluates the next term in the policy.
- C. The system drops the packet and logs the entry.
- D. The system drops the packet and sends an ICMP message.

### QUESTION 35

Which keystroke combination allows users to move the cursor to the end of the command line without deleting text?

- A. Ctrl + a
- B. Ctrl + e
- C. Ctrl + w
- D. Ctrl + u

### QUESTION 36

Which two statements describe IPv4 default behavior for BGP? (Choose two.)

- A. All active BGP routes are exported to configured EBGP neighbors.
- B. All BGP routes are exported to configured EBGP neighbors.
- C. All BGP routes are imported into the inet4.0 routing table.
- D. All BGP routes are imported into the inet.0 routing table.

### QUESTION 37

```
[edit system ntp]
user@router# show
server 172.25.11.254;
```

Referring to the exhibit, which action would synchronize the local router's clock with the NTP server?

- A. Issue the `set date ntp operational` command.
- B. Configure the correct NTP trusted key using the `set trusted-key <key-value>` configuration command under the `[edit system ntp]` hierarchy.
- C. Configure the NTP server using the `set boot-server 172.25.11.254` configuration command under the `[edit system ntp]` hierarchy.
- D. Reboot the router.

### QUESTION 38

You have configured an SRX Series device for the first time. When you commit your configuration, the Junos OS notifies you that you cannot yet commit your configuration.

Which configuration step must you complete?

- A. date/time
- B. root authentication
- C. security policies
- D. hostname

### QUESTION 39

Which two interfaces are considered physical interfaces? (Choose two.)

- A. ge-0/0/0
- B. et-7/1/4.0
- C. et-3/0/0:0.501
- D. xe-10/2/1

### QUESTION 40

Which configuration parameter on a Junos device modifies the default next-hop resolution behavior of a static route?

- A. resolve
- B. no-readvertise
- C. passive
- D. preference

### QUESTION 41

```
user@router> show chassis routing-engine
Routing Engine status:
  Temperature                0 degrees C / 32 degrees F
  CPU temperature            0 degrees C / 32 degrees F
  Total memory               931 MB Max 270 MB used ( 29 percent)
  Memory utilization         28 percent
  5 sec CPU utilization:
    User                     1 percent
    Background               0 percent
    Kernel                   1 percent
    Interrupt                0 percent
    Idle                     98 percent
  1 min CPU utilization:
    User                     0 percent
    Background               0 percent
    Kernel                   1 percent
    Interrupt                0 percent
    Idle                     99 percent
```

```

5 min CPU utilization:
  User          0 percent
  Background    0 percent
  Kernel        1 percent
  Interrupt     0 percent
  Idle          99 percent

15 min CPU utilization:
  User          0 percent
  Background    0 percent
  Kernel        1 percent
  Interrupt     0 percent
  Idle          99 percent

Model          VSRX-S
Serial ID      BUILTIN
Start time     2020-01-16 15:21:32 UTC
Uptime        12 days, 4 hours, 33 minutes, 7 seconds
Last reboot reason 0x4000:VJUNOS reboot

```

Referring to the exhibit, which two statements are correct? (Choose two.)

- A. The memory utilization is 28%.
- B. The memory utilization is 72%.
- C. The 15 minute CPU load average is 99%.
- D. The CPU kernel utilization is 1%.

**QUESTION 42**

Which two statements describe the connection between the control plane and the forwarding plane? (Choose two.)

- A. Exception traffic is preferred over control traffic during congestion.
- B. A rate limiter is configured by default.
- C. Control traffic is preferred over exception traffic during congestion.
- D. No rate limiter is configured by default.

**QUESTION 43**

When a system process encounters an error, how does the Junos OS protect other processes from being impacted?

- A. Each process operates in its own shared memory space.
- B. The Junos OS executes only one process at a time.
- C. Each routing protocol runs as an individual process.
- D. The Junos OS executes multiple processes simultaneously.

#### QUESTION 44

```
user@router> show route forwarding-table
routing table: inet
internet:
Destination Type RtRef next hop Type Index NhRef Netif
default user 0 0:32.51.07.89.2 ucst 520 ge-0/0/0.0
default perm 0 rjct 36 1
0.0.0.0/32 perm 0 dscd 34 1
10.21.0.0/16 user 0 192.168.10.100 ucast 535 3 ge-0/0/2.0
10.21.14.0/24 user 0 192.168.11.100 ucast 528 3 ge-0/0/1.0
10.21.14.10/30 user 0 192.168.12.100 ucast 530 3 ge-0/0/3.0
```

Which next-hop interface will be used to reach the 10.21.14.16 destination as shown in the exhibit?

- A. ge-0/0/0.0
- B. ge-0/0/2.0
- C. ge-0/0/1.0
- D. ge-0/0/3.0

#### QUESTION 45

```
user@router# run show route
inet.0: 8 destinations, 10 routes (8 active, 0 holddown, 0 hidden)
+ = Active Route, - = Last Active, * = Both
0.0.0.0/0          *[BGP/170] 00:00:24, localpref 100
                   AS path: 65000 I, validation-state: unverified
                   > to 172.18.6.1 via ge-0/0/0.0
                   > to 172.18.7.1 via ge-0/0/1.0
                   [BGP/170] 00:00:24, localpref 100
                   AS path: 65000 I, validation-state: unverified
                   > to 172.18.7.1 via ge-0/0/1.0
10.210.0.0/16     *[Static/5] 1w0d 20:17:39
                   > to 172.25.11.254 via fxp0.0
172.18.6.0/30     *[Direct/0] 00:00:30
                   > via ge-0/0/0.0
172.18.6.2/32     *[Local/0] 00:00:30
                   Local via ge-0/0/0.0
172.31.16.0/24   *[BGP/170] 00:00:24, localpref 100
                   AS path: 65000 I, validation-state: unverified
                   > to 172.18.7.1 via ge-0/0/1.0
                   [BGP/170] 00:00:28, localpref 100
                   AS path: 802 5512 3318 65000 I, validation-state: unverified
                   > to 172.18.6.1 via ge-0/0/0.0
```

```

192.168.1.1/32      *[OSPF/10] 00:00:25, metric 1
                   > to 192.168.11.2 via ge-0/0/4.0
192.168.80.0/28   *[BGP/170] 00:00:24, localpref 100, from 172.18.6.1
                   AS path: 65000 I, validation-state: unverified
                   to 172.18.6.1 via ge-0/0/0.0
                   > to 172.18.7.1 via ge-0/0/1.0
                   [BGP/170] 00:00:24, localpref 100
                   AS path: 65000 I, validation-state: unverified
                   > to 172.18.7.1 via ge-0/0/1.0
224.0.0.5/32     *[OSPF/10] 00:01:11, metric 1
                   MultiRecv

```

What is the next hop for a packet destined to 192.168.80.98 as shown in the exhibit?

- A. 172.18.6.1
- B. 172.25.11.254
- C. 172.18.7.1
- D. 192.168.11.2

#### QUESTION 46

```

{master:0}[edit routing-instances]
root@switch# top set interfaces xe-0/0/39.0 family ethernet-switching

```

Which statement is true about the command shown in the exhibit?

- A. There needs to be a ; after `top` for the command to be accepted as a valid command.
- B. Only `top` should be used, no other options are allowed on the same line.
- C. The command shown in the exhibit would be accepted as a valid command.
- D. If you replace `top` with `up` command, it becomes valid.

#### QUESTION 47

You configured the route filter shown in the exhibit.

```

{edit policy-options]
user@router# show
policy-statement Policy-One {
    term term-One{
        from {
            route-filter 172.35.0.0/16 orlonger;
        }
        then accept;
    }
}

```

In this scenario, which IP addresses would term-One accept?

- A. IP addresses that are part of the 172.35.0.0/16 network only.
- B. IP addresses that are part of the 172.35.0.0/16 network and IP addresses that are in the 172.35.0.0/16 and 172.36.0.0/16 subnets.
- C. IP addresses that are in a subnet of 172.35.0.0/16 network, but not IP addresses that are part of the 172.35.0.0/16 network itself.
- D. IP addresses that are part of the 172.35.0.0/16 network and IP addresses that are in subnets of 172.35.0.0/16 network.

### QUESTION 48

You are troubleshooting an issue and want to monitor syslog in real time.

Which operational command accomplishes this task?

- A. `show log messages`
- B. `monitor start messages`
- C. `monitor traffic interface fxp0.0`
- D. `show log messages | refresh 1`

### QUESTION 49

You issue the `request system zeroize` command.

Which statement is correct in this scenario?

- A. All data files are deleted and all configuration settings are returned to factory defaults.
- B. All data files remain unchanged but all configuration settings are returned to factory defaults.
- C. Disk space is freed by rotating log files and a proposed list of files to delete is presented.
- D. All data files are deleted and the configuration settings remain unchanged.

### QUESTION 50

| Item             | Version | Part number | Serial number | Description  |
|------------------|---------|-------------|---------------|--------------|
| Chassis          |         |             | EBE7ABF9EA61  | VSRX         |
| Midplane         | REV 08  | 750-058562  | 4229D770      | VSRX         |
| Pseudo CB 0      |         |             |               |              |
| Routing Engine 0 |         | BUILTIN     | BUILTIN       | VSRX-S       |
| FPC 0            | REV 07  | 611-049549  | RL3714040884  | FPC          |
| PIC 0            |         | BUILTIN     | BUILTIN       | VSRX DPKD GE |

Referring to the exhibit, which command was issued to generate the output?

- A. `show chassis environment`
- B. `show chassis hardware`
- C. `show chassis routing-engine`
- D. `show chassis fpc`

### QUESTION 51

What are two default password requirements on devices running Junos OS? (Choose two.)

- A. Passwords must contain at least one special character.
- B. Alphanumeric character classes must be used.
- C. An expiration date must be set.
- D. Passwords must be at least six characters in length.

### QUESTION 52

Which parameter would you use to prohibit the redistribution of a static route used for management traffic?

- A. discard
- B. passive
- C. reject

D. no-readvertise

### QUESTION 53

Which two keystrokes are used to auto-complete commands? (Choose two.)

- A. Esc
- B. Spacebar
- C. Tab
- D. End

### QUESTION 54

Which two conditions must exist in a Junos device for traffic to transit the device to a specific destination? (Choose two.)

- A. A routing table entry for that destination must exist.
- B. A firewall filter must exist to allow traffic to reach that destination.
- C. A forwarding table entry for that destination must exist.
- D. A routing policy must be in place on the device.

### QUESTION 55

You are attempting to upgrade the Junos OS on your device, but there is not enough space to complete the upgrade.

Which parameter, added to the `request system software add` command, would solve the problem?

- A. validate
- B. force
- C. no-validate
- D. no-copy

## QUESTION 56

```
user@router> show route
```

```
inet.0: 1222 destinations, 1525 routes (1222 active, 0 holddown, 0 hidden)  
+ = Active Route, - = Last Active, * = Both
```

```
0.0.0.0/0          *[Static/5] 1w2d 22:59:01  
                  > to 10.10.10.1 via fxp0.0  
10.10.10.0/25     *[Direct/0] 1w2d 22:59:01  
                  > via fxp0.0  
                  [Direct/0] 1w2d 22:58:57  
                  > via fxp0.0  
10.10.10.7/32     *[Local/0] 1w2d 22:59:01  
                  Local via fxp0.0  
10.10.10.9/32     *[Local/0] 1w2d 22:58:57  
                  Local via fxp0.0  
10.200.200.0/23  *[Direct/0] 1w2d 22:30:24  
                  > via xe-0/0/3.100
```

Referring to the exhibit, what does the number inside the square brackets represent?

- A. route preference
- B. metric
- C. protocol reference number
- D. local preference

## QUESTION 57

What are three functions of the RE? (Choose three.)

- A. to monitor the chassis
- B. to maintain the forwarding tables
- C. to implement policing
- D. to enforce stateless firewall filters
- E. to manage the PFE

### QUESTION 58

What information would you find using the CLI help function? (Choose two.)

- A. Junos technical publications
- B. explanation of traceoption events
- C. tip for the day
- D. explanation of specific system log error messages

### QUESTION 59

What is an "X" release of the Junos OS?

- A. a standard feature release
- B. a feature velocity release
- C. a special feature release
- D. a feature beta release

### QUESTION 60

```
user@router> show route
inet.0: 5 destinations, 5 routes (5 active, 0 holddown, 0 hidden)
+ = Active Route, - = Last Active, * = Both
10.210.0.0/16      *[Static/5] 1w0d 20:17:39
                  > to 172.25.11.254 via fxp0.0
172.18.6.0/30     *[Direct/0] 00:00:30
                  > via ge-0/0/0.0
172.31.20.0/24   *[BGP/170] 00:00:24, localpref 100
                  AS path: 65000 I, validation-state: unverified
                  > to 172.18.6.1 via ge-0/0/0.0
                  to 172.18.7.1 via ge-0/0/1.0
                  [BGP/170] 00:00:24, localpref 100
                  AS path: 65000 I, validation-state: unverified
                  > to 172.18.7.1 via ge-0/0/1.0
172.31.17.0/24   *[OSPF/150] 00:00:25, metric 1
                  > to 192.168.11.2 via ge-0/0/4.0
                  [BGP/170] 00:00:24, localpref 100
                  AS path: 65000 I, validation-state: unverified
                  > to 172.18.6.1 via ge-0/0/0.0
                  to 172.18.7.1 via ge-0/0/1.0
```

```
[BGP/170] 00:00:24, localpref 100
  AS path: 65000 I, validation-state: unverified
> to 172.18.7.1 via ge-0/0/1.0
```

...

You notice traffic destined to 172.31.17.0/24 is traversing an OSPF path rather than a BGP path.

Referring to the exhibit, what is causing this behavior?

- A. The 172.31.17.0/24 BGP route has a higher route preference.
- B. The 172.31.17.0/24 route does not have a valid BGP entry.
- C. The 172.31.17.0/24 BGP route is missing a valid default next hop.
- D. The 172.31.17.0/24 BGP route's outgoing interface is down.

#### QUESTION 61

A packet enters a Junos device. No matching destination entry exists in the forwarding table.

How will the device respond?

- A. The RE responds to the destination with a source unreachable notification message.
- B. The RE responds to the source with a destination unreachable notification message.
- C. The PFE responds to the destination with a source unreachable notification message.
- D. The PFE responds to the source with a destination unreachable notification message.

#### QUESTION 62

Which keystroke is used to auto-complete user-defined variables?

- A. End
- B. Spacebar
- C. Tab
- D. Home

#### QUESTION 63

Which two platforms are supported in both physical and virtual form factors? (Choose two.)

- A. NFX Series
- B. MX Series
- C. SRX Series
- D. ACX Series

**QUESTION 64**

| Fan speed<br>(degrees C) | Yellow alarm<br>(degrees C) |      | Red alarm<br>(degrees C) |         | Fire Shutdown<br>(degrees C) |         |
|--------------------------|-----------------------------|------|--------------------------|---------|------------------------------|---------|
| Item                     | Normal                      | High | Normal                   | Bad fan | Normal                       | Bad fan |
| Chassis default<br>100   | 48                          | 54   | 65                       | 55      | 75                           | 65      |
| Routing Engine 0<br>108  | 55                          | 80   | 95                       | 95      | 105                          | 100     |

Which command displays the output shown in the exhibit?

- A. `show chassis hardware`
- B. `show chassis temperature-thresholds`
- C. `show chassis alarms`
- D. `show chassis environment`

**QUESTION 65**

Which account is used to access a Junos device in a factory-default configuration?

- A. `root`
- B. `admin`
- C. `lab`
- D. `juniper`

**QUESTION 66**

What does the output of the `show route forwarding-table` command display?

- A. the Packet Forwarding Engine's routing table
- B. the inactive entries in the Routing Engine's routing table
- C. the routing protocol databases in the Routing Engine
- D. the Routing Engine's forwarding table

### QUESTION 67

Which command is used to replace the entire current configuration?

- A. load replace
- B. load set
- C. load patch
- D. load override

### QUESTION 68

```
[edit]
user@router# show system authentication-order
authentication-order [ radius tacplus ];
```

Referring to the exhibit, what is the expected behavior for login attempts from users that receive a reject form from both the RADIUS and TACACS+ servers?

- A. Users are prompted for a local authentication password.
- B. Users are not prompted for a local authentication password.
- C. Users are prompted for the root authentication password.
- D. Users are granted limited access to the device using a guest account.

### QUESTION 69

What is responsible for processing multicast transit traffic?

- A. control plane
- B. management plane
- C. RE
- D. PFE

#### QUESTION 70

```
[edit firewall family inet]
user@router# show
filter input-filter {
  term count-packets {
    from {
      source-address {
        10.10.10.0/24;
      }
    }
    then count building-1;
  }
  term reject-others {
    then {
      reject;
    }
  }
}
```

Referring to the exhibit, which statement is correct when traffic is received from 10.10.10.4?

Referring to the exhibit, which statement is correct when traffic is received from 10.10.10.4?

A. The traffic is counted and rejected.

B. The traffic only accepted.

C. The traffic is counted and accepted.

D. The traffic is only rejected.

#### QUESTION 71

Which three statements describe OSPF? (Choose three.)

A. OSPF uses a distance-vector algorithm to calculate routing cost.

B. OSPF calculates the best path to each destination.

C. OSPF is a link-state IGP.

D. OSPF must operate between different autonomous systems.

E. OSPF uses areas to incorporate hierarchy and to allow for scalability.

### QUESTION 72

What is the minimum system-defined user class required to issue `clear` commands?

- A. read-only
- B. operator
- C. authorized
- D. super-user

### QUESTION 73

You have entered the command `show log messages | match "error|kernel|panic"`.

Which statement is correct regarding the keywords `error`, `kernel`, and `panic` in the output?

- A. The output will contain all messages from the file except the ones that contain at least one of the three defined keywords.
- B. The output will contain all messages from the file that contain at least one of the three defined keywords.
- C. The output will contain all messages from the file except the ones that contain all three defined keywords.
- D. The output will contain all messages from the file that contain all three defined keywords.

### QUESTION 74

Which two statements describe a routing policy? (Choose two.)

- A. Attribute changes applied to export policies always affect the local routing table.
- B. Routing policies are used to choose which routes are sent to neighbors using dynamic routing protocols.
- C. Active and inactive routes are available for export from the routing table.
- D. A routing policy allows you to control the flow of information into the routing table.

### QUESTION 75

In which directory are traceoption files stored by default?

- A. `/var/tmp/`
- B. `/var/log/`
- C. `/var/db/`
- D. `/var/home/`

#### QUESTION 76

```
[edit]
user@router# show firewall policer policer1
if-exceeding {
    bandwidth-limit 1g;
    burst-size-limit 100k;
}
then discard;
```

You are asked to limit traffic on interface xe-0/0/3 to 1G using the policer shown in the exhibit.

Which configuration would accomplish this task?

A. [edit]  
user@router# show interfaces xe-0/0/3  
unit 0 {  
 accounting-profile policer1;  
 family inet {  
 address 1.1.1.1/23;  
 }  
}

B. [edit]  
user@router# show interfaces xe-0/0/3  
unit 0 {  
 family inet {  
 policer {  
 input policer1;  
 }  
 address 1.1.1.1/23;  
 }  
}

C. [edit]  
user@router# show interfaces xe-0/0/3  
accounting-profile policer1;  
unit 0 {  
 family inet {  
 address 1.1.1.1/23;  
 }  
}

```
D. [edit]
user@router# show interfaces xe-0/0/3
unit 0 {
    bandwidth 1g;
    family inet {
        address 1.1.1.1/23;
    }
}
```

#### QUESTION 77

... Hit [Enter] to boot immediately, or space bar for command prompt. <user presses Spacebar> Type '?' for a list of commands, 'help' for more detailed help. loader> boot -s  
... Enter full pathname of shell or 'recovery' for root password recovery or RETURN for / bin/sh: recovery

Referring to the exhibit, what will be the result?

- A. The device will boot in single-user mode at the operational prompt.
- B. The device will boot in multi-user mode at the configuration prompt.
- C. The device will boot into single-user mode at the shell prompt.
- D. The device will boot into multi-user mode at the shell prompt.

#### QUESTION 78

How would you change the display so that 40 lines will be displayed in the terminal program when you are logged into a Junos device?

- A. Issue the `set cli screen-length 40` command from operational mode.
- B. Set the display options in your terminal program.
- C. Issue the `set cli screen-length 40` command from configuration mode.
- D. Set the window size of your terminal program.

#### QUESTION 79

What would you use as a network tool to open a secure terminal connection from a device running Junos OS to another device?

- A. SSH
- B. HTTPS
- C. RDP
- D. telnet

### QUESTION 80

A Junos device is in a factory-default configuration and no host name is set.

What is used in place of a host name in this scenario?

- A. router
- B. amnesiac**
- C. Junos
- D. user

### QUESTION 81

| Interface  | Admin | Link | Proto | Local           | Remote  |
|------------|-------|------|-------|-----------------|---------|
| ge-0/0/0   | up    | up   |       |                 |         |
| ge-0/0/0.0 | up    | up   | inet  | 172.18.6.2/30   |         |
| ge-0/0/1   | up    | up   |       |                 |         |
| ge-0/0/1.0 | up    | up   | inet  | 172.18.7.2/30   |         |
| ge-0/0/2   | up    | up   |       |                 |         |
| ge-0/0/3   | up    | up   |       |                 |         |
| ge-0/0/4   | up    | up   |       |                 |         |
| ge-0/0/4.0 | up    | up   | inet  | 192.168.11.1/24 |         |
| ge-0/0/5   | up    | up   |       |                 |         |
| ge-0/0/6   | up    | up   |       |                 |         |
| ge-0/0/7   | up    | up   |       |                 |         |
| ge-0/0/8   | up    | up   |       |                 |         |
| ge-0/0/9   | up    | up   |       |                 |         |
| fxp0       | up    | up   |       |                 |         |
| fxp0.0     | up    | up   | inet  | 172.25.11.1/24  |         |
| lo0        | up    | up   |       |                 |         |
| lo0.0      | up    | up   | inet  | 192.168.31.1    | --> 0/0 |
| lo0.16384  | up    | up   | inet  | 127.0.0.1       | --> 0/0 |
| lo0.16385  | up    | up   | inet  |                 |         |

Which command produced the output shown in the exhibit?

- A. `show interfaces filters`
- B. `show interfaces terse`**
- C. `show interfaces summary`
- D. `show interfaces extensive`

### QUESTION 82

Given the configuration shown below:

```
set system authentication-order [ tacplus ]
```

Which two statements are correct? (Choose two.)

- A. If the TACACS+ server is not available, the local user database is checked.
- B. If the TACACS+ server is available and rejects the username/password provided, the user is not allowed to access the device.
- C. If the TACACS+ server is not available, the user is not allowed to access the device.
- D. If the TACACS+ server is available and rejects the username/password provided, the local password database is checked.

### QUESTION 83

```
[edit snmp]
user@router# show
community my-community {
    authorization read-only;
    clients {
        10.21.15.16/32;
    }
}
trap-group my-first-trap-group {
    version v2;
    categories {
        chassis;
        link;
    }
    targets {
        10.21.15.180;
    }
}
```

```
}
trap-group my-second-trap-group {
    targets {
        10.21.15.181;
    }
}
```

Referring to the exhibit, which statement is true?

- A. Traps are sent to 10.21.15.180.
- B. Traps are allowed from 10.21.15.180.
- C. Traps are sent to 10.21.15.16.
- D. Traps are allowed from 10.21.15.16.

**QUESTION 84**

```
user@router>
```

```
*** System shutdown message from user@router ***
```

```
System going down at 08:28
```

```
The system will be powered down in 10 minutes for maintenance.
```

```
user@router>
```

While working on a Junos device, you receive the message shown in the exhibit.

In this scenario, what should you do to stop the shutdown process?

- A. Issue the `request system power-off in 0` command.
- B. Issue the `clear system commit` command.
- C. Issue the `request system halt in 0` command.
- D. Issue the `clear system reboot` command.

### QUESTION 85

Which routing table is used for multicast forwarding cache?

- A. inet.2
- B. inet.0
- C. inet.1
- D. inet.3

### QUESTION 86

What is the default location of the primary syslog file on Junos devices?

- A. /var/log/
- B. /var/tmp/
- C. /var/home/
- D. /var/db/

### QUESTION 87

```
[edit routing-options]
user@router# show
rib inet6.0 {
    static {
        route 0::/0 next-hop 3001::1,
    }
}
```

Referring to the exhibit, which type of route does the configuration create?

- A. a generated route
- B. a default gateway
- C. an indirect next hop
- D. a non-advertised route

#### QUESTION 88

```
[edit]
user@router# show interfaces
ge-0/0/2 {
  unit 0 {
    family inet {
      address 172.16.10.1/24;
    }
  }
}
```

Referring to the exhibit, which command will change the 172.16.10.1/24 IP address to 172.16.100.1/24 IP address?

- A. copy interfaces ge-0/0/2 unit 0 family inet address 172.16.10.1/24 to address 172.16.100.1/24
- B. rename interfaces ge-0/0/2 unit 0 family inet address 172.16.10.1/24 to address 172.16.100.1/24
- C. set interfaces ge-0/0/2 unit 0 family inet address 172.16.100.1/24
- D. insert interfaces ge-0/0/2 unit 0 family inet address 172.16.10.1/24 before address 172.16.100.1/24

#### QUESTION 89

Which command is used to load the rescue configuration?

- A. load replace rescue
- B. load merge rescue
- C. rollback rescue
- D. rollback

---

#### QUESTION 90

What are two examples of transit traffic? (Choose two.)

- A. SFTP traffic that enters and exits the same interface on the local router.
- B. SCP traffic that enters one interface and exits another interface on the local router.
- C. SFTP traffic that enters one interface and is destined for another interface on the local router.
- D. SCP traffic that is destined for the router's loopback interface.

**QUESTION 91**

A Junos device is configured with multiple routing protocols to the same destination prefix.

By default, which route will be active in the forwarding table?

- A. an OSPF route
- B. an IS-IS route
- C. a BGP route
- D. a static route

**QUESTION 92**

Which statement is true about the `longer` route-filter match type?

- A. All routes within the specified prefix that are longer than or equal to the given prefix are considered a match.
- B. All routes within the specified prefix that are longer or equal to the given prefix up to a defined acceptable prefix length are considered a match.
- C. All routes within the specified prefix that are longer than the given prefix up to a defined acceptable prefix length are considered a match.
- D. All routes within the specified prefix that are longer than the given prefix are considered a match.