

DHCP Server:

First, install DHCP server role. In Server 2012, install DHCP server role. Open **Server Manager**. On the menu, click **Manage** and click **Add Roles and Features**.

1 Configure this local server

2 Add roles and features

3 Add other servers to manage

4 Create a server group

QUICK START

WHAT'S NEW

Manage Tools View Help

Add Roles and Features

Remove Roles and Features

Add Servers

Create Server Group

Server Manager Properties

Select the option “**Role-based or feature-based installation**”. Click **Next** to continue.

Add Roles and Features Wizard

DESTINATION SERVER
srv.test.local

Select installation type

Before You Begin

Installation Type

Server Selection

Server Roles

Features

Confirmation

Results

Select the installation type. You can install roles and features on a running physical computer or virtual machine, or on an offline virtual hard disk (VHD).

Role-based or feature-based installation
Configure a single server by adding roles, role services, and features.

Remote Desktop Services installation
Install required role services for Virtual Desktop Infrastructure (VDI) to create a virtual machine-based or session-based desktop deployment.

Select the server and click **Next** again.

Add Roles and Features Wizard

DESTINATION SERVER
srv.test.local

Select destination server

Before You Begin

Installation Type

Server Selection

Server Roles

Features

Confirmation

Results

Select a server or a virtual hard disk on which to install roles and features.

Select a server from the server pool

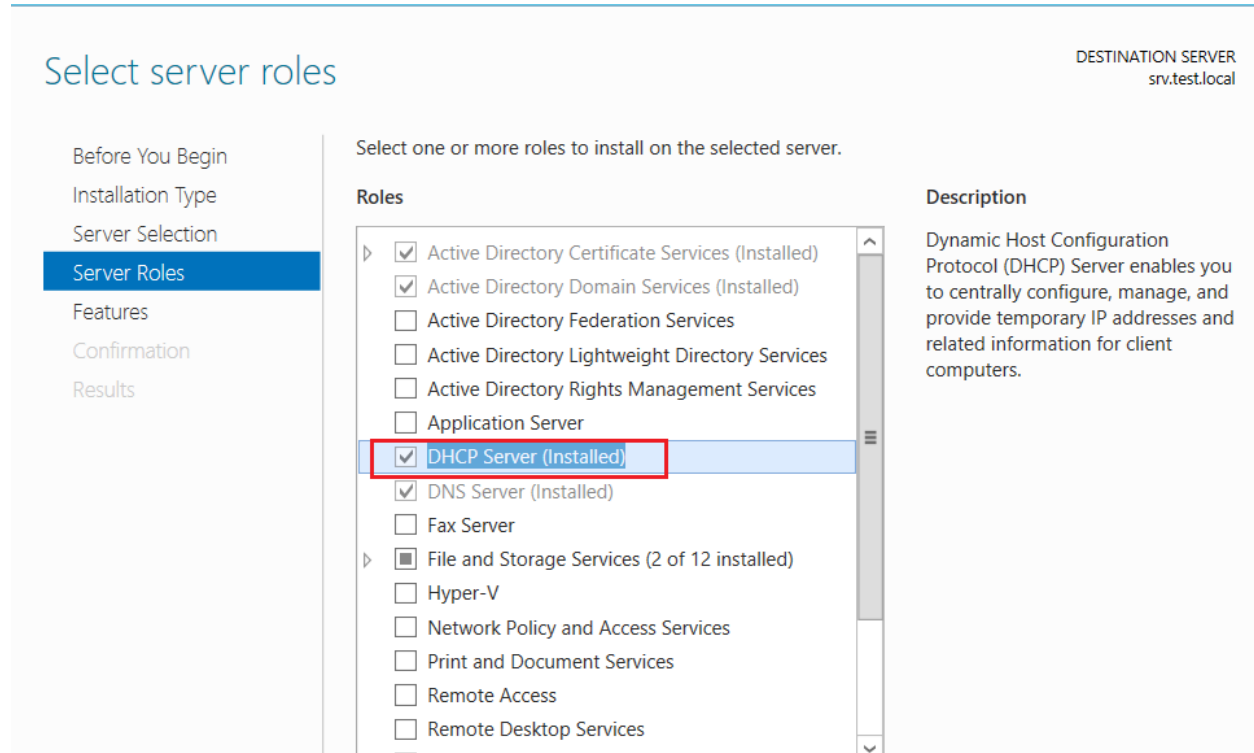
Select a virtual hard disk

Server Pool

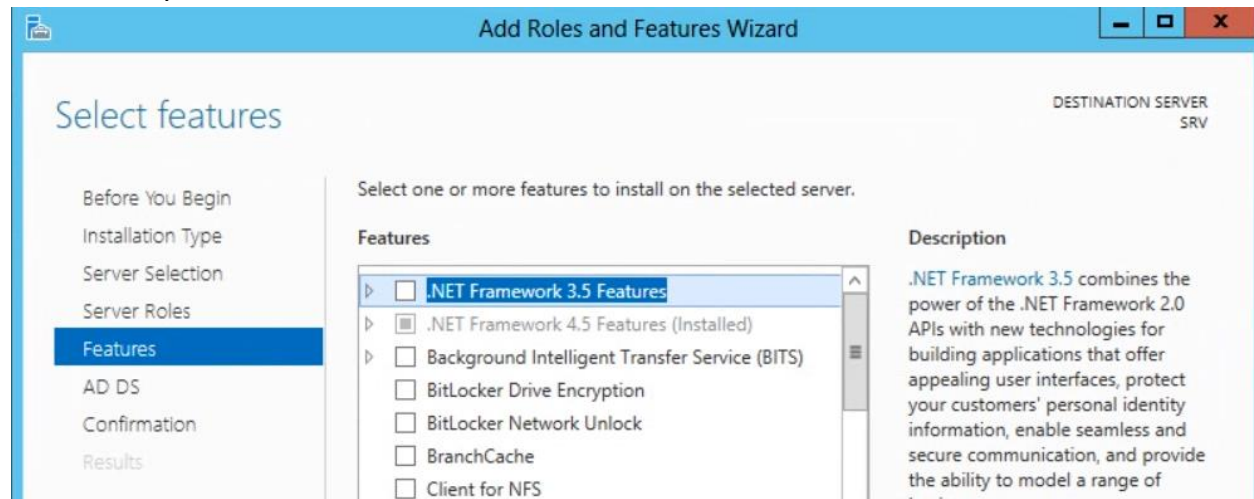
Filter:

Name	IP Address	Operating System
srv.test.local	192.168.100.230	Microsoft Windows Server 2012 R2 Standard

In the “**Select Server Role**” window, select DHCP role. This would add additional features required for DHCP. Click on “Add Features” to add all the dependent features automatically. Moreover, please ensure that “Include Management tool” option is checked. This will install the management tool required to manager the role. Click **Next** to continue.



In the “**Select Feature**” window, all the dependent features are already selected. We don’t need to select any additional feature. Click **Next**.



This window will explain you the functionality and advantages of DHCP.

DHCP Server DESTINATION SERVER

Before You Begin
Installation Type
Server Selection
Server Roles
Features
DHCP Server
Confirmation
Results

The Dynamic Host Configuration Protocol allows servers to assign, or lease, IP addresses to computers and other devices that are enabled as DHCP clients. Deploying a DHCP server on the network provides computers and other TCP/IP-based network devices with valid IP addresses and the additional configuration parameters these devices need, called DHCP options. This allows computers and devices to connect to other network resources, such as DNS servers, WINS servers, and routers.

Things to note:

- You should configure at least one static IP address on this computer.
- Before you install DHCP Server, you should plan your subnets, scopes and exclusions. Store the plan in a safe place for later reference.

Check the option “Restart the destination server automatically if required”, this would restart your Computer after role is successfully installed. Click on yes, if you are good to automatically restart the computer. Click on install to begin the installation process.

Confirm installation selections DESTINATION SERVER

Before You Begin
Installation Type
Server Selection
Server Roles
Features
DHCP Server
Confirmation
Results

To install the following roles, role services, or features on selected server, click Install.

Restart the destination server automatically if required

Optional features (such as administration tools) might be displayed on this page because they have been selected automatically. If you do not want to install these optional features, click Previous to clear their check boxes.

DHCP Server
Remote Server Administration Tools
Role Administration Tools
DHCP Server Tools

Installation progress can be reviewed in this window. You can even close this window; it would not interrupt the running task. Click **close** once the installation is completed.

Installation progress DESTINATION SERVER

Before You Begin
Installation Type
Server Selection
Server Roles
Features
DHCP Server
Confirmation
Results

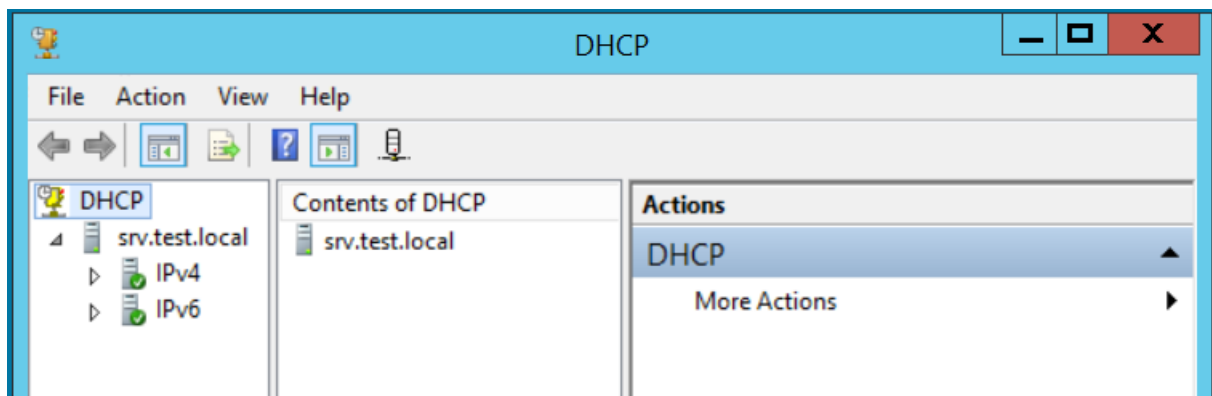
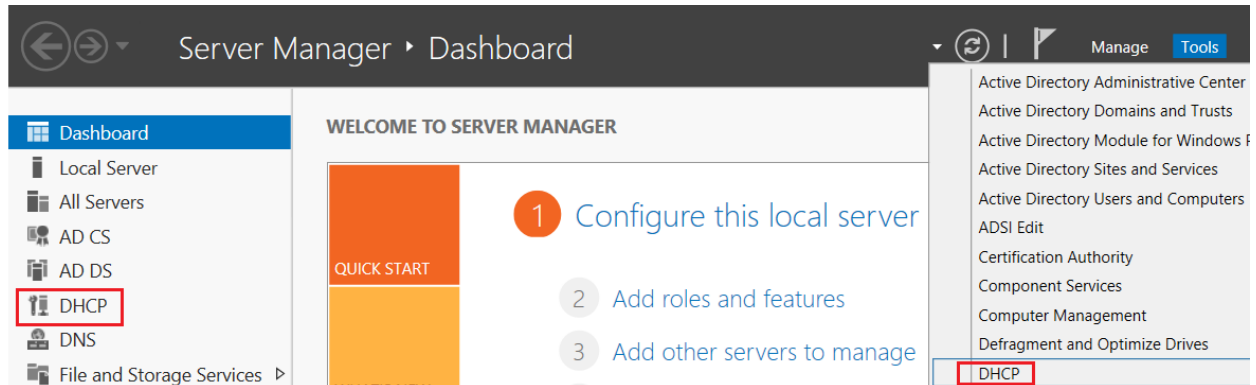
View installation progress

i Feature installation
Installation started on DC04.abc.com

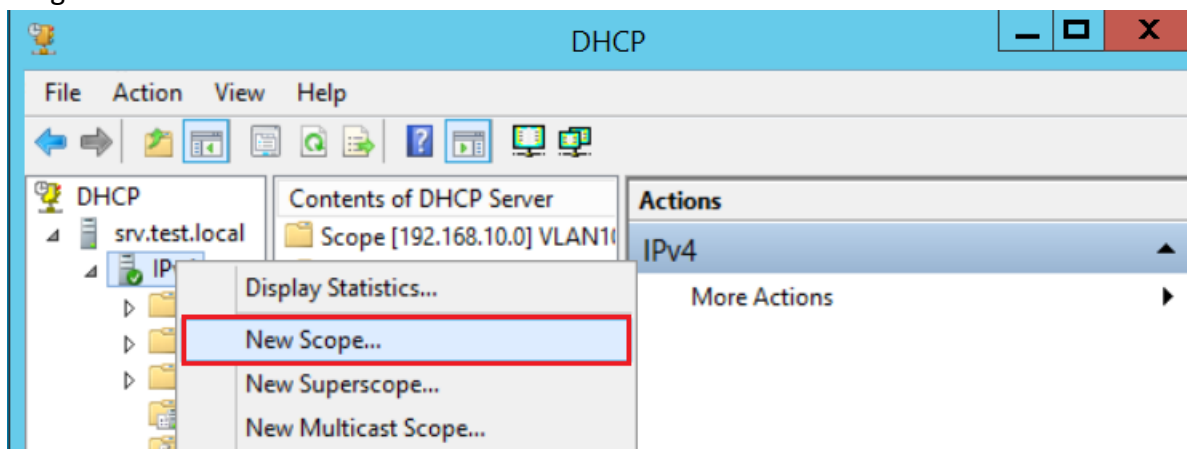
DHCP Server
Remote Server Administration Tools
Role Administration Tools
DHCP Server Tools

Create DHCP Server Scopes:

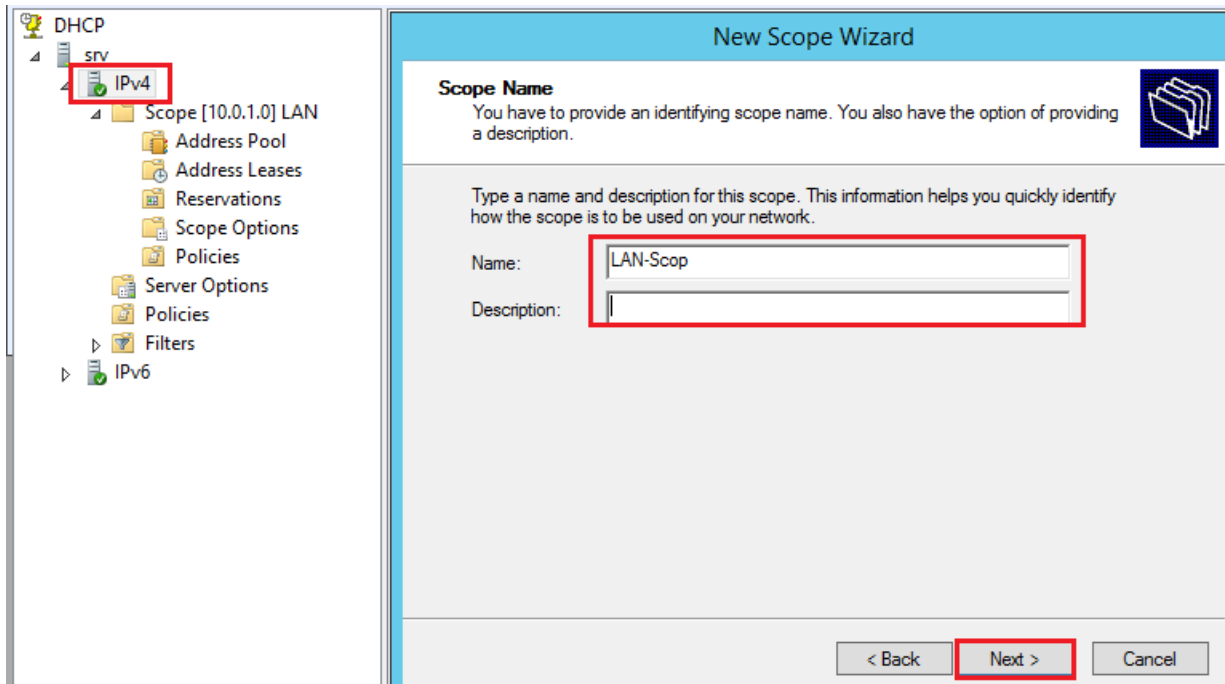
Login to DHCP server as administrator, run DHCP control console.



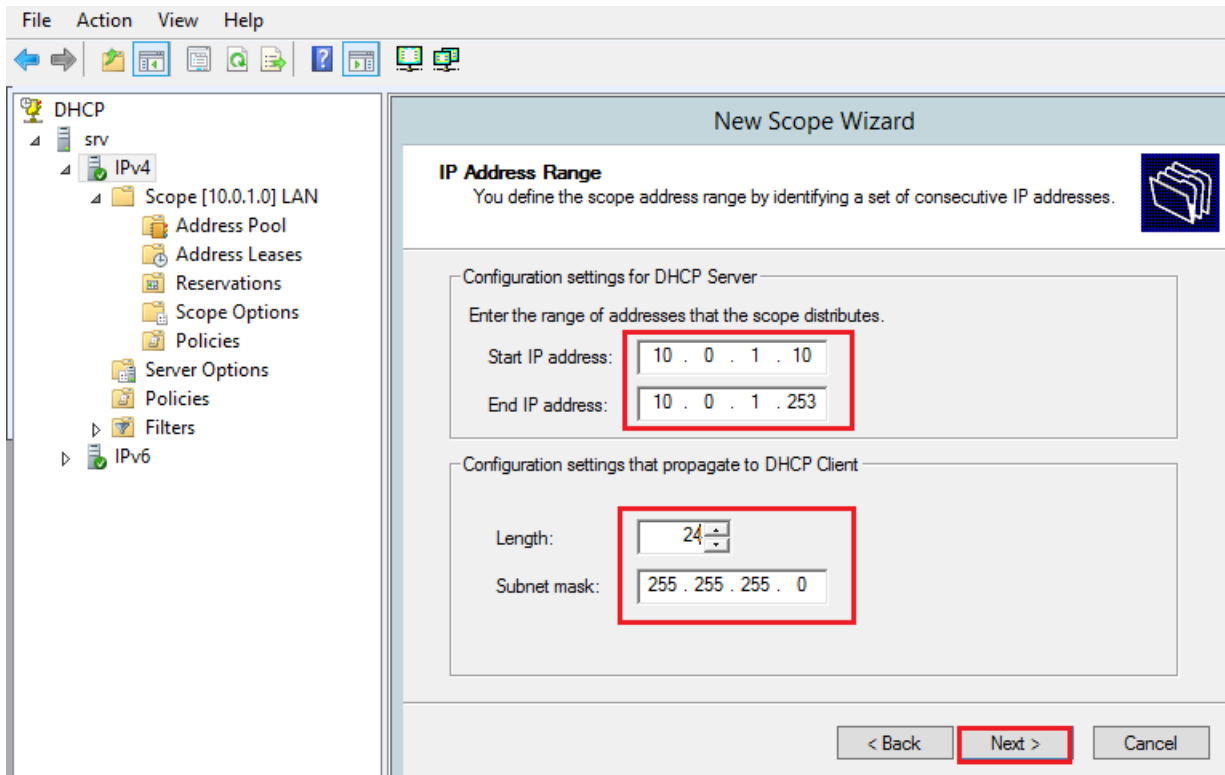
To create the new scope, right click on **IPV4** then select on **New Scope**. Scope is a group or range of IPs that DHCP would lease to clients.



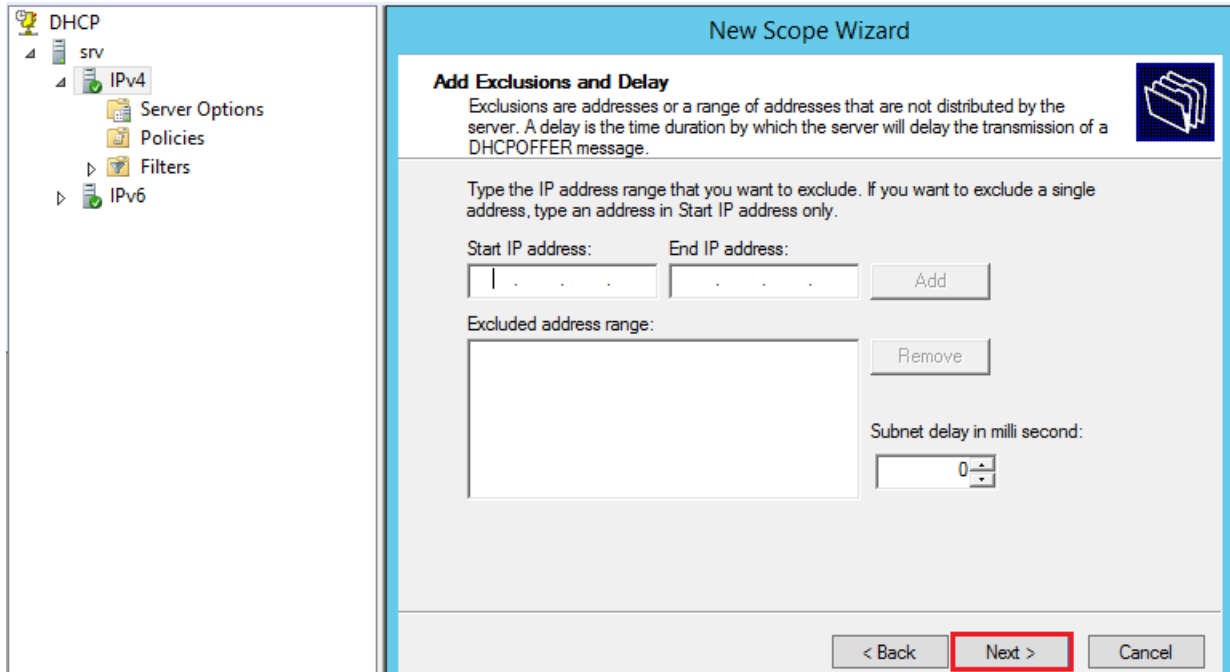
It opens “the New Scope Wizard”. It defines the range of IPs DHCP will assign to client. To configure DHCP Scope, enter the name of the Scope you want to define as per your requirement and you can give a brief description, then click on next to proceed.



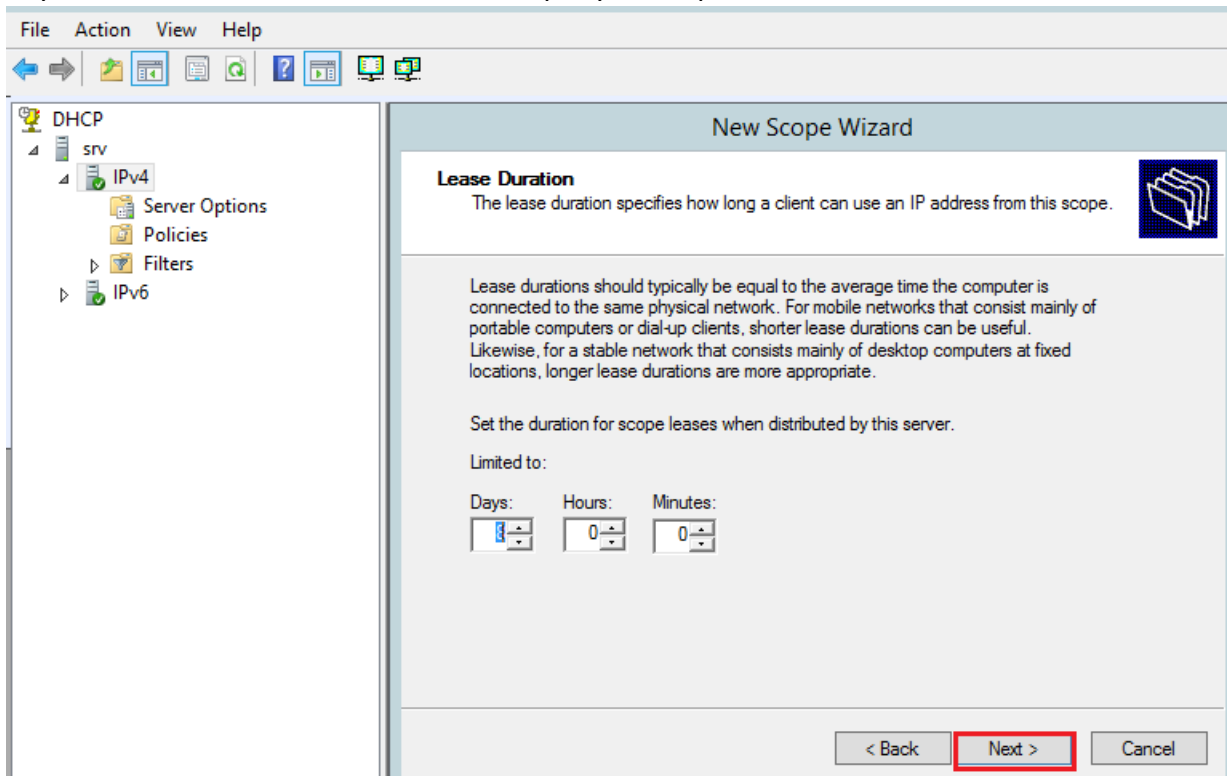
On the “IP Address Range” window, we have to define the range of IPs for the scope. Click **Next** to continue. In the “Subnet mask” define the subnet mask.



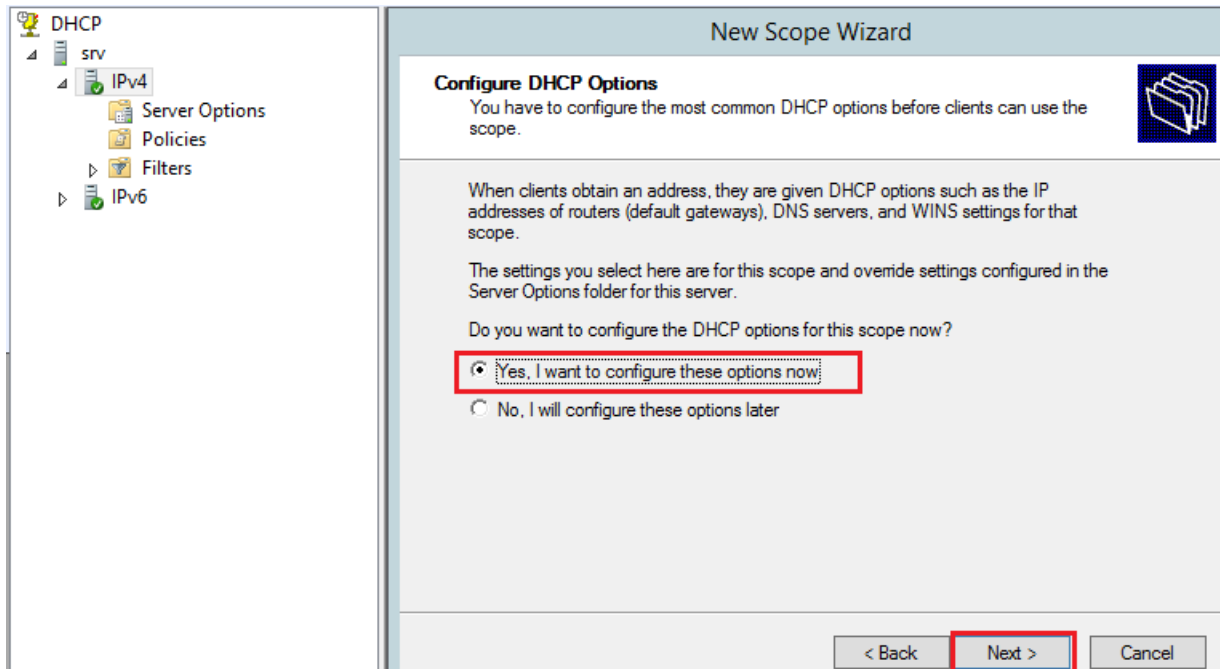
On the "Add Exclusions and Delay" console we set the IP range that we want to exclude. Exclusion defines the range of IP address that DHCP will not offer or assign to client machines. To continue, click **Next**.



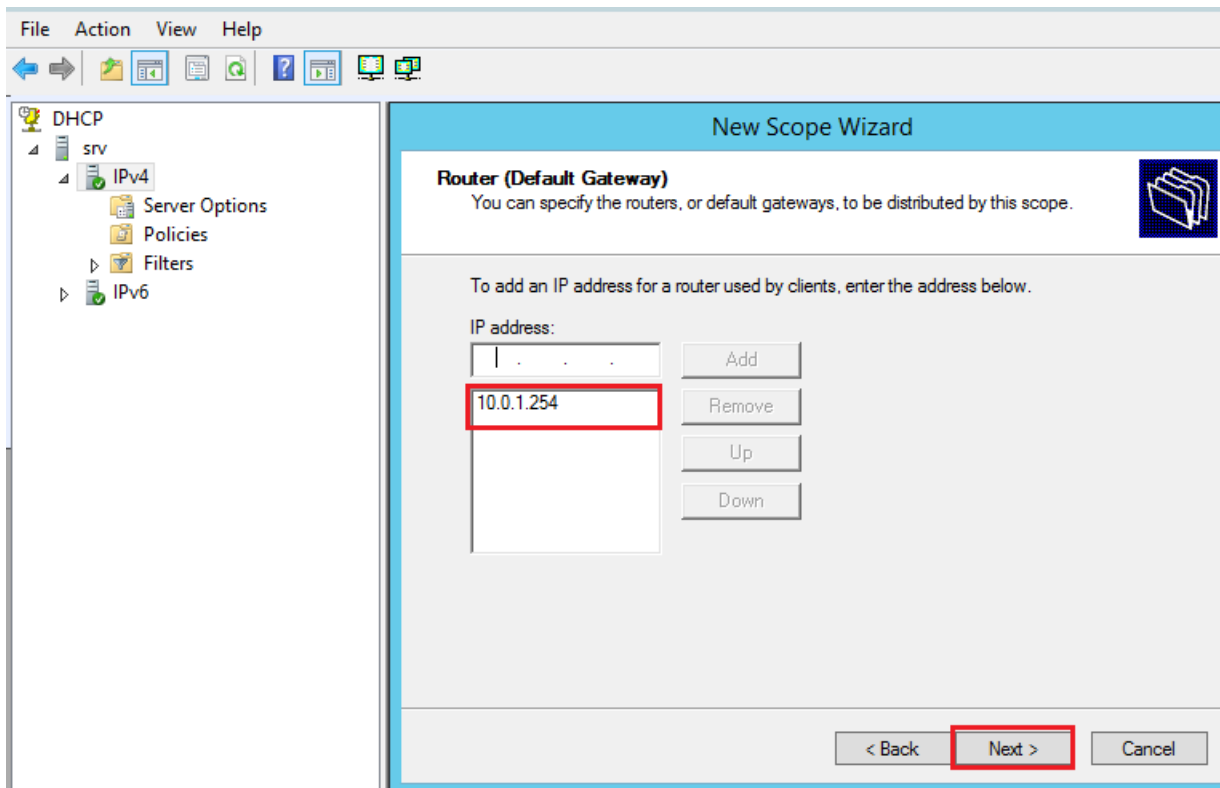
On the "Lease Duration" console we can define the lease for the IP, by default the lease is for 8 days. It can be increased or decreased as per your requirement.



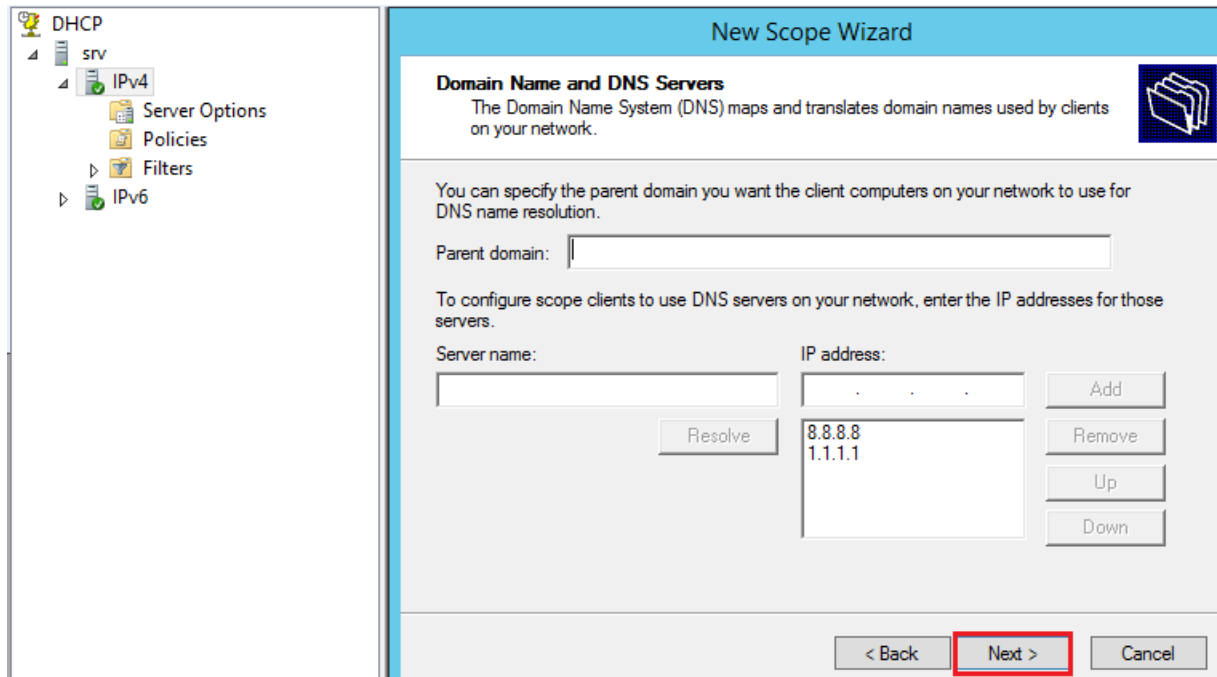
On the Configure DHCP options select checkbox “Yes, I want to configure these options now” and click **Next** to continue.



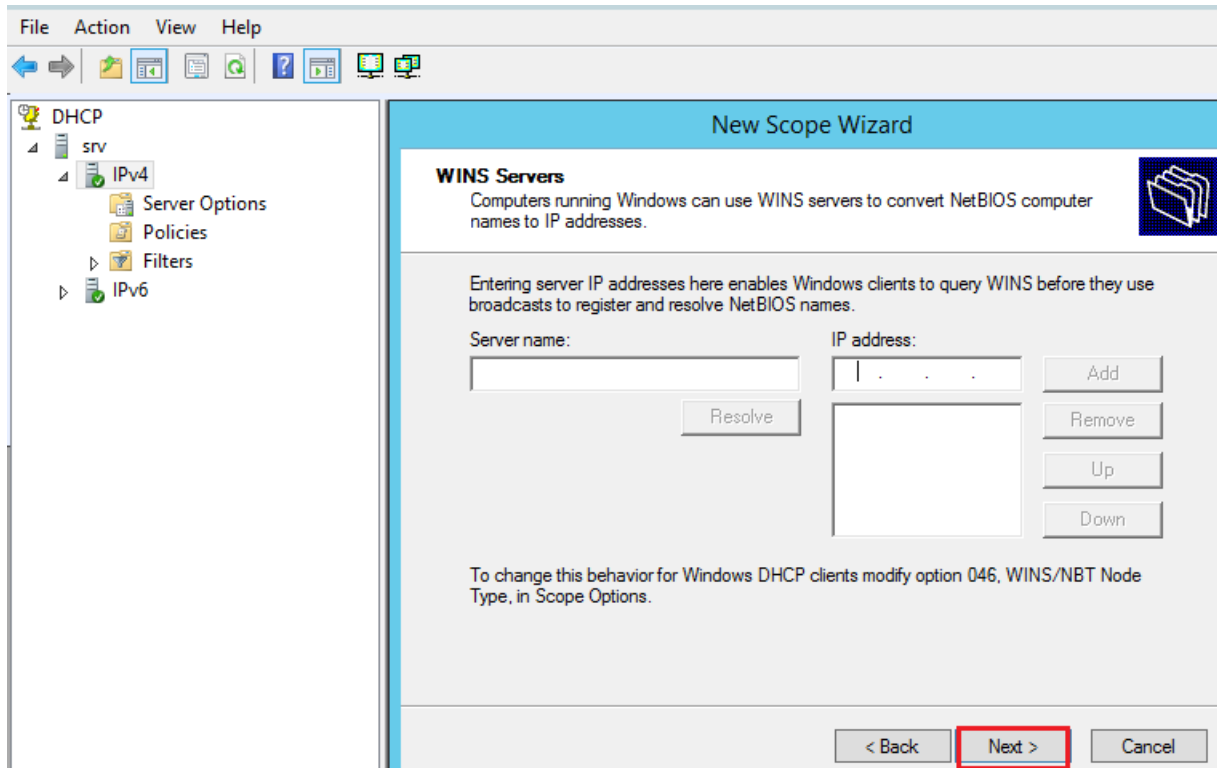
To add an IP address for a **Router (Gateway)** used by clients, enter the address below otherwise click on **Next** to continue.



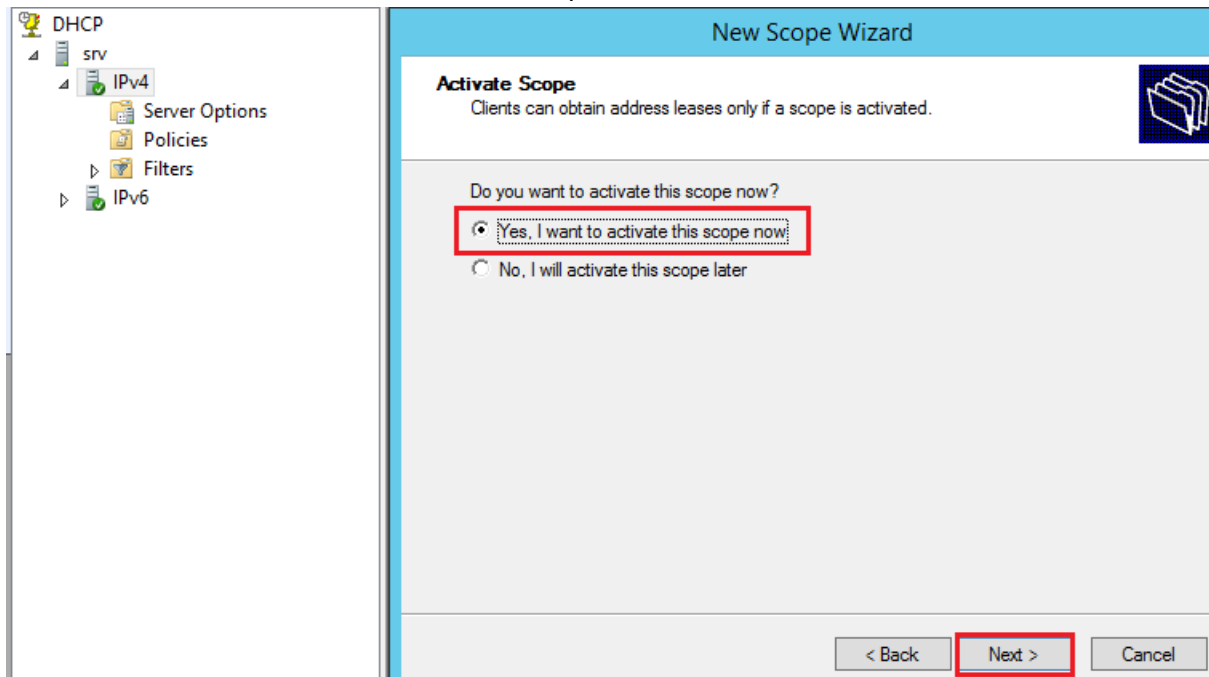
On **Domain Name and DNS Servers** window enter parent domain and DNS server name and DNS IP address. In case of multiple DNS IPs, you can add them individually. Click next to continue.



On **WINS Server** window enter details like Server name and IP address otherwise click on Next



On Activate Scope window select “Yes, I want to activate this scope now” to activate the scope otherwise select “No, I will activate this scope later” to activate it after sometime.



On “**Complete the New Scope Wizard**” click ‘Finish’ to close the console.

