

Border Gateway Protocol Introduction



Steven Moran

TECHNICAL INSTRUCTOR



Exterior routing protocol

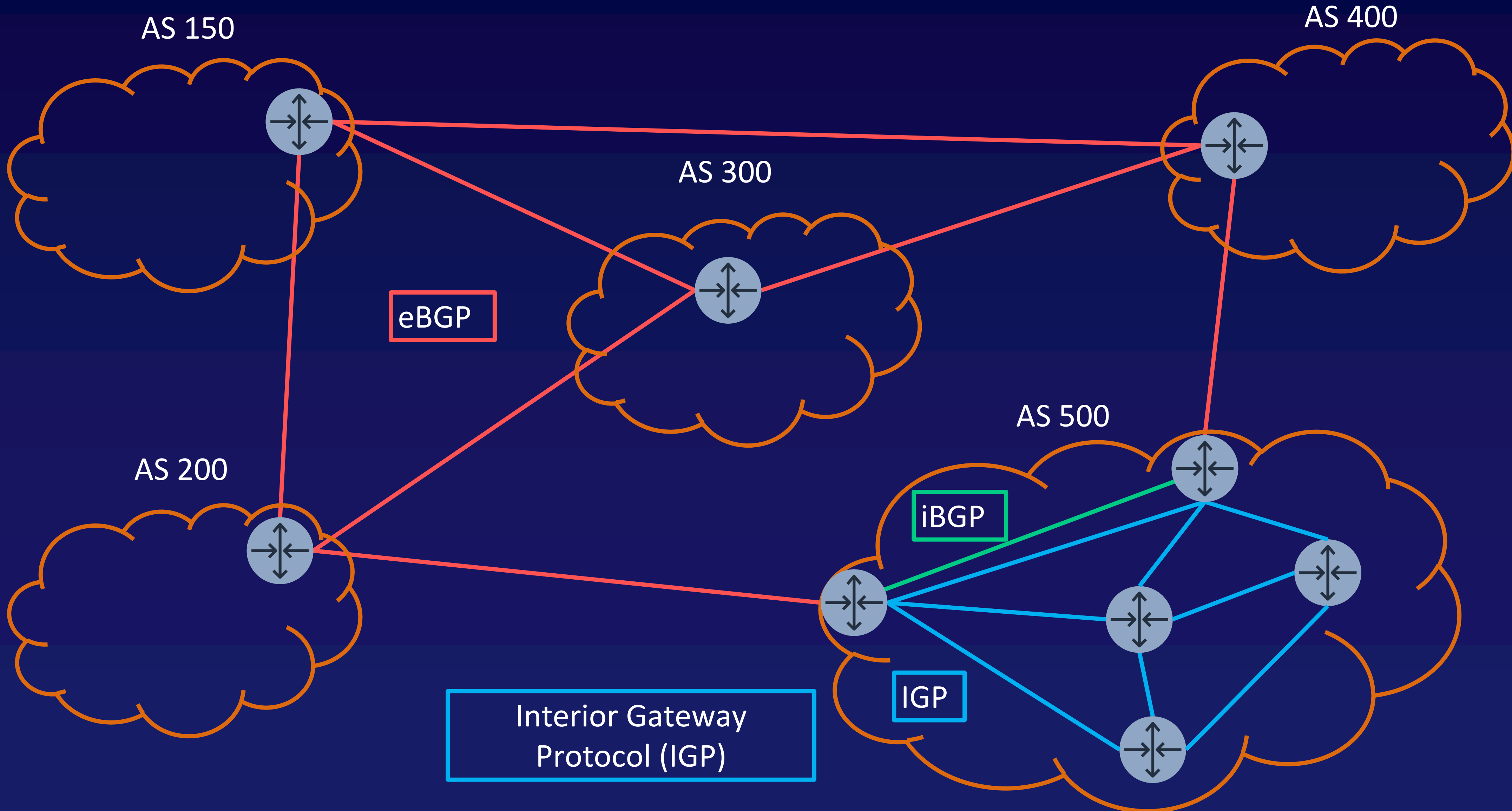
Network routes (**prefixes**) are shared between mutually-configured **peers**

No prefixes are automatically shared

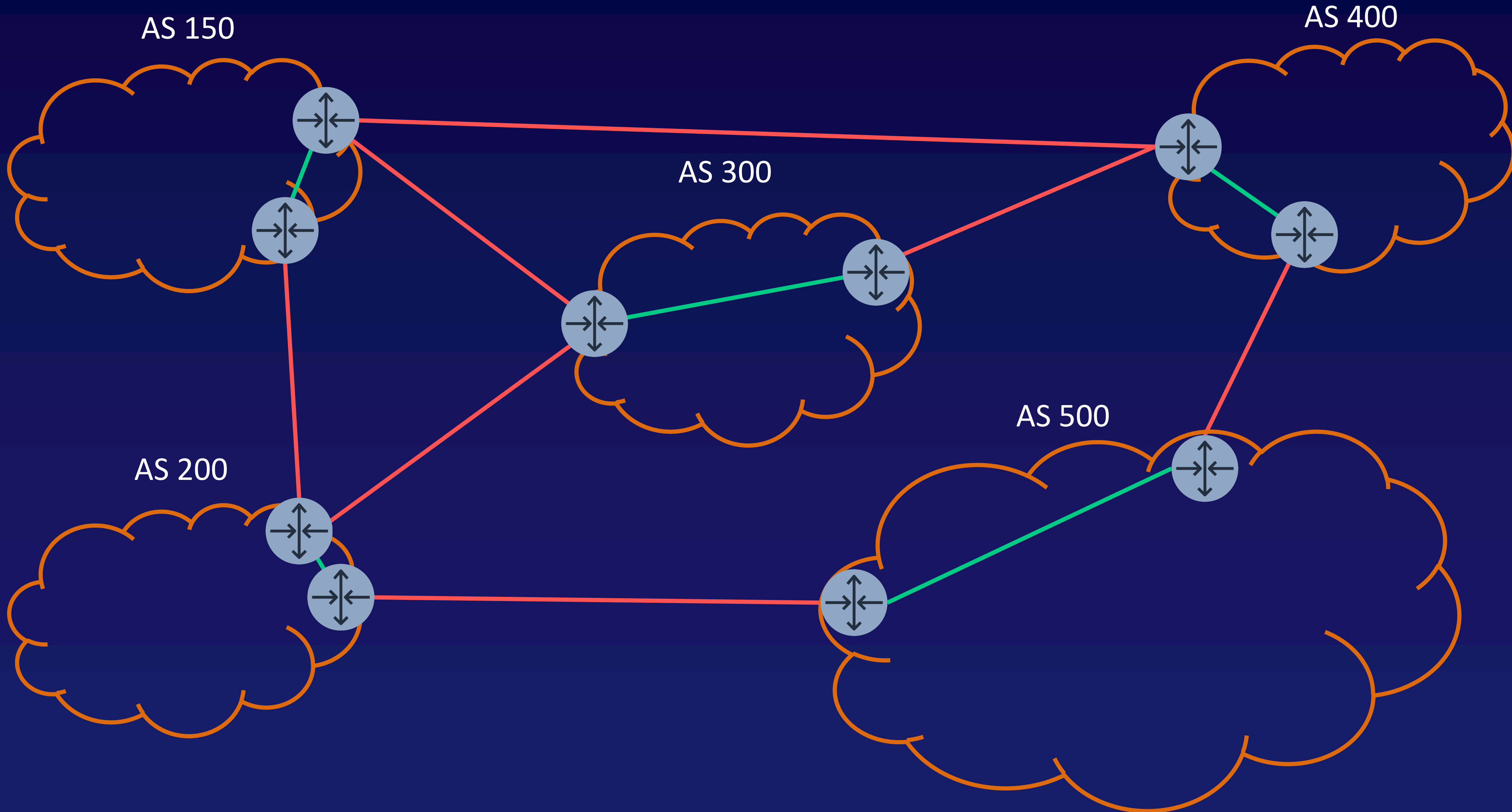
Selects the “best” of multiple paths to the same destination

TCP 179

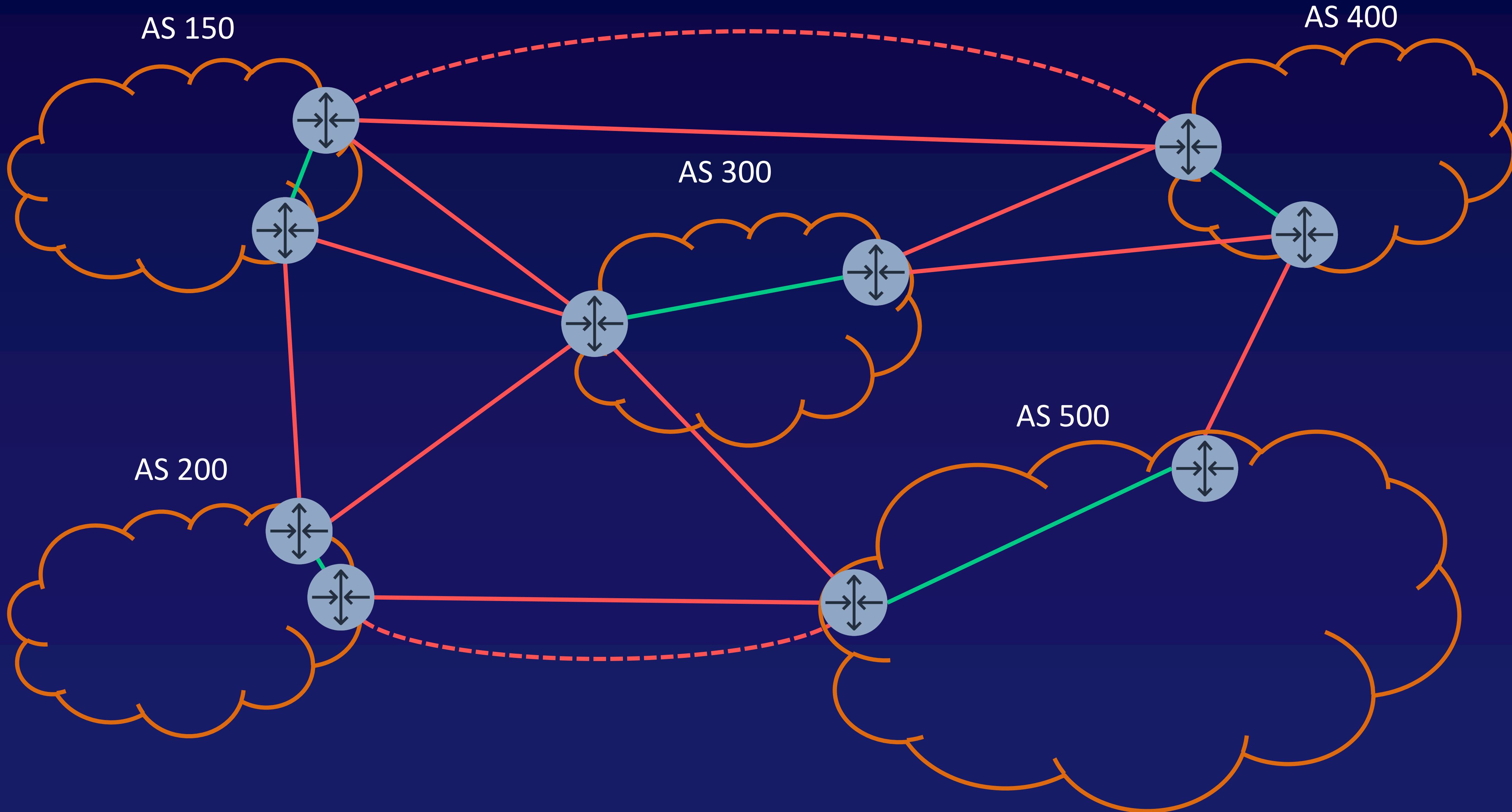
AS Recap and BGP Peers



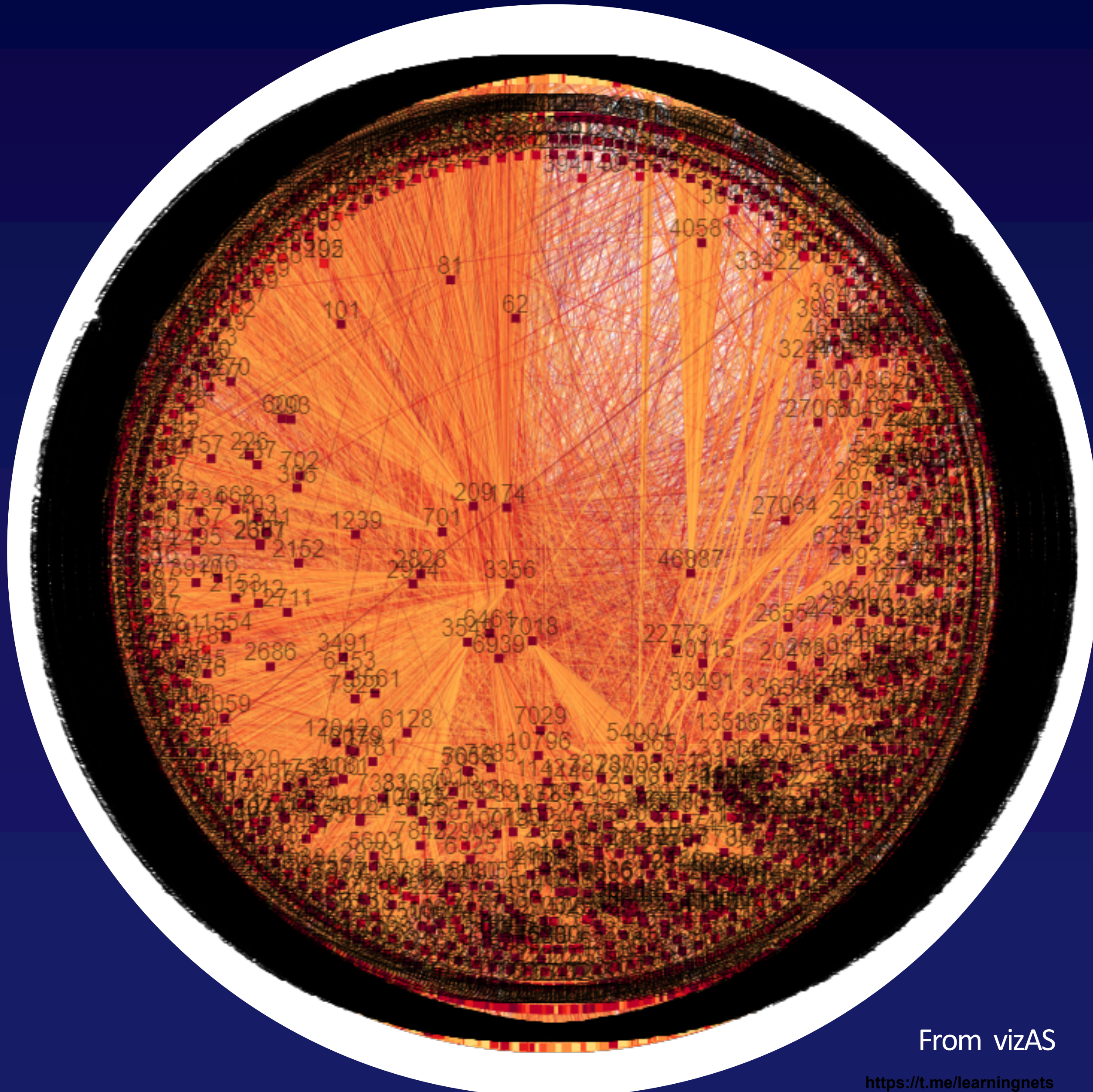
AS Recap and BGP Peers



AS Recap and BGP Peers



AS Recap and BGP Peers



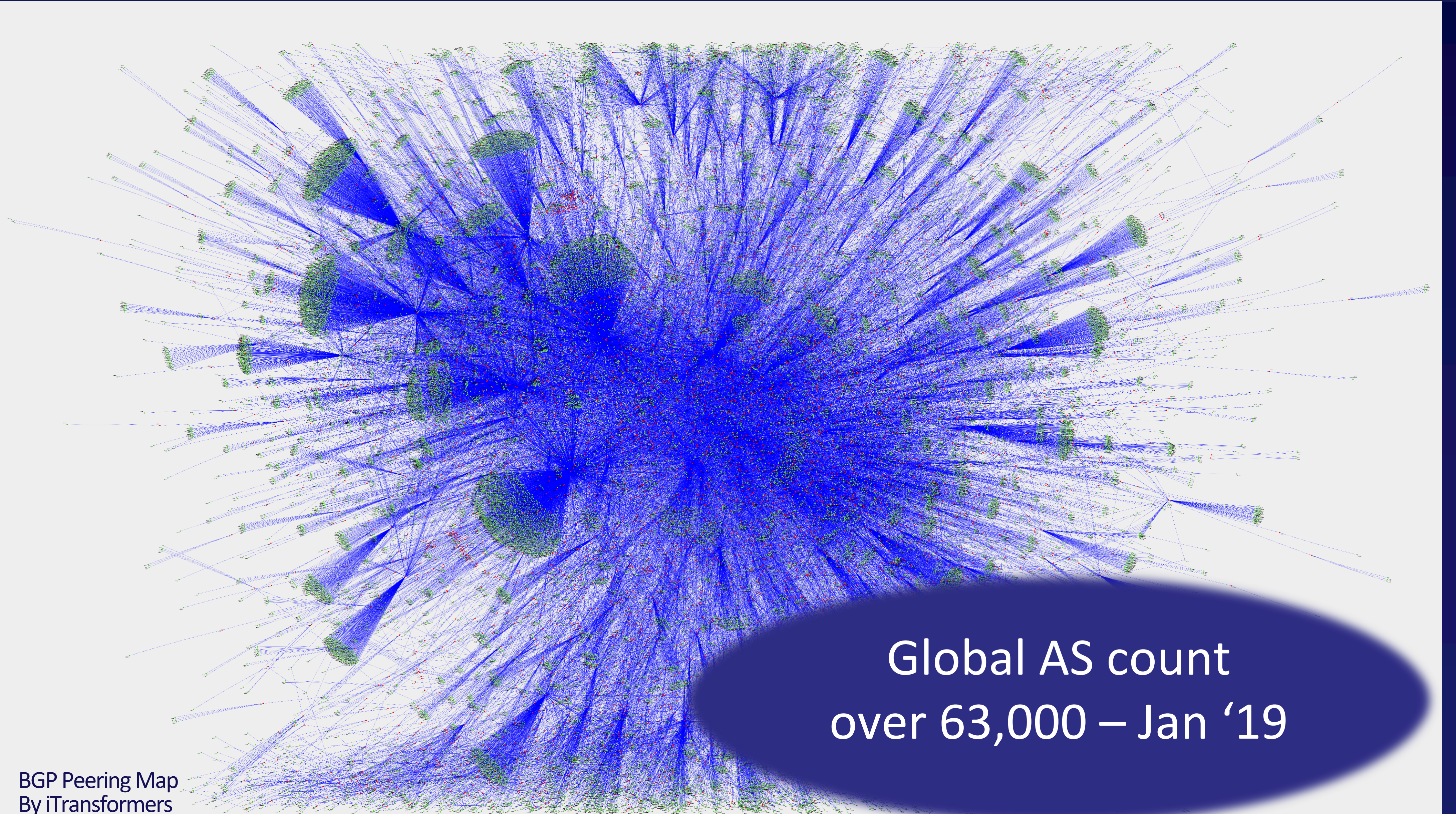
United States

IPv4 - 16979 total ASNs in
24905 visible peerings

From vizAS

<https://t.me/learningnets>

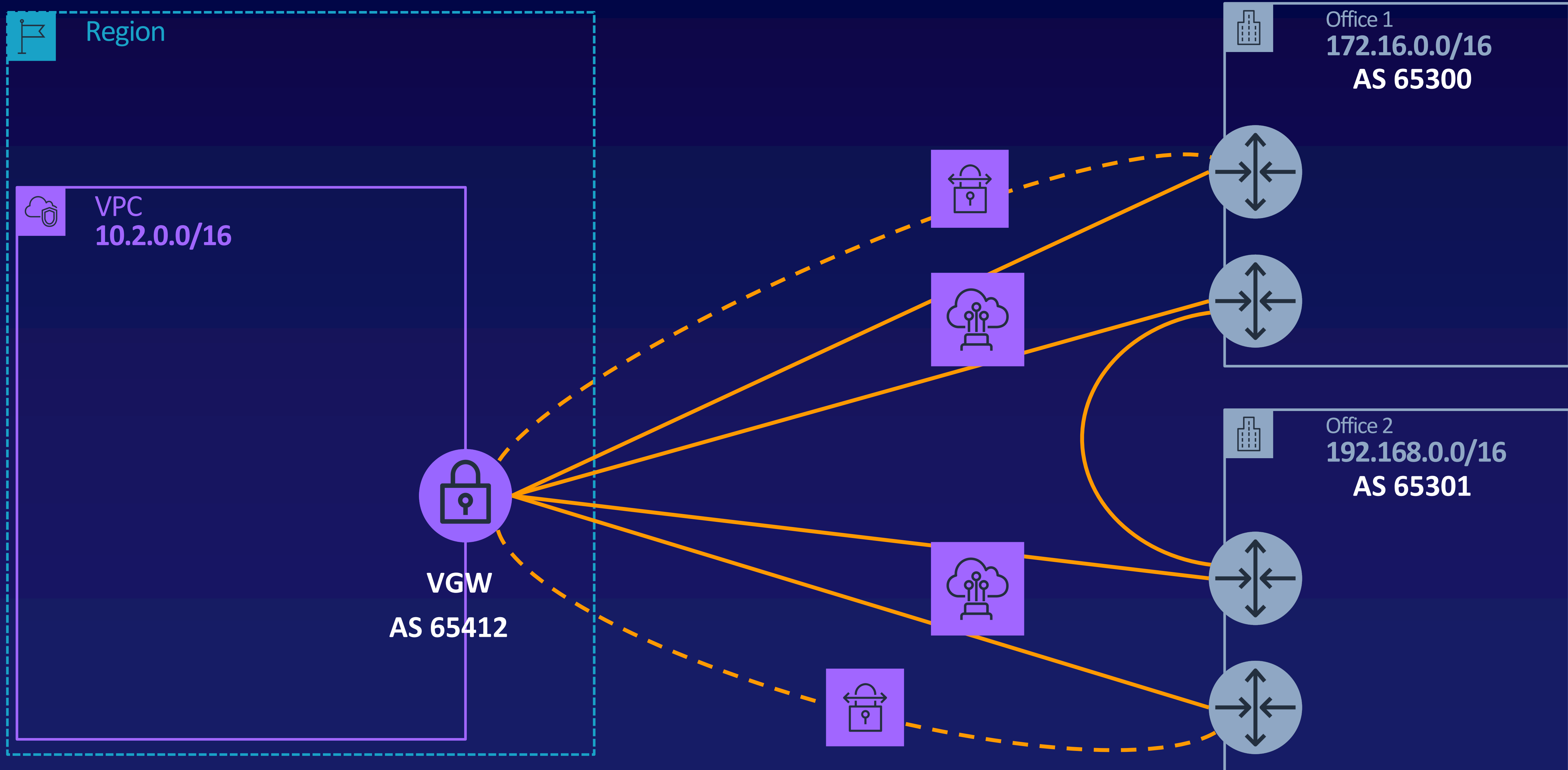
AS Recap and BGP Peers



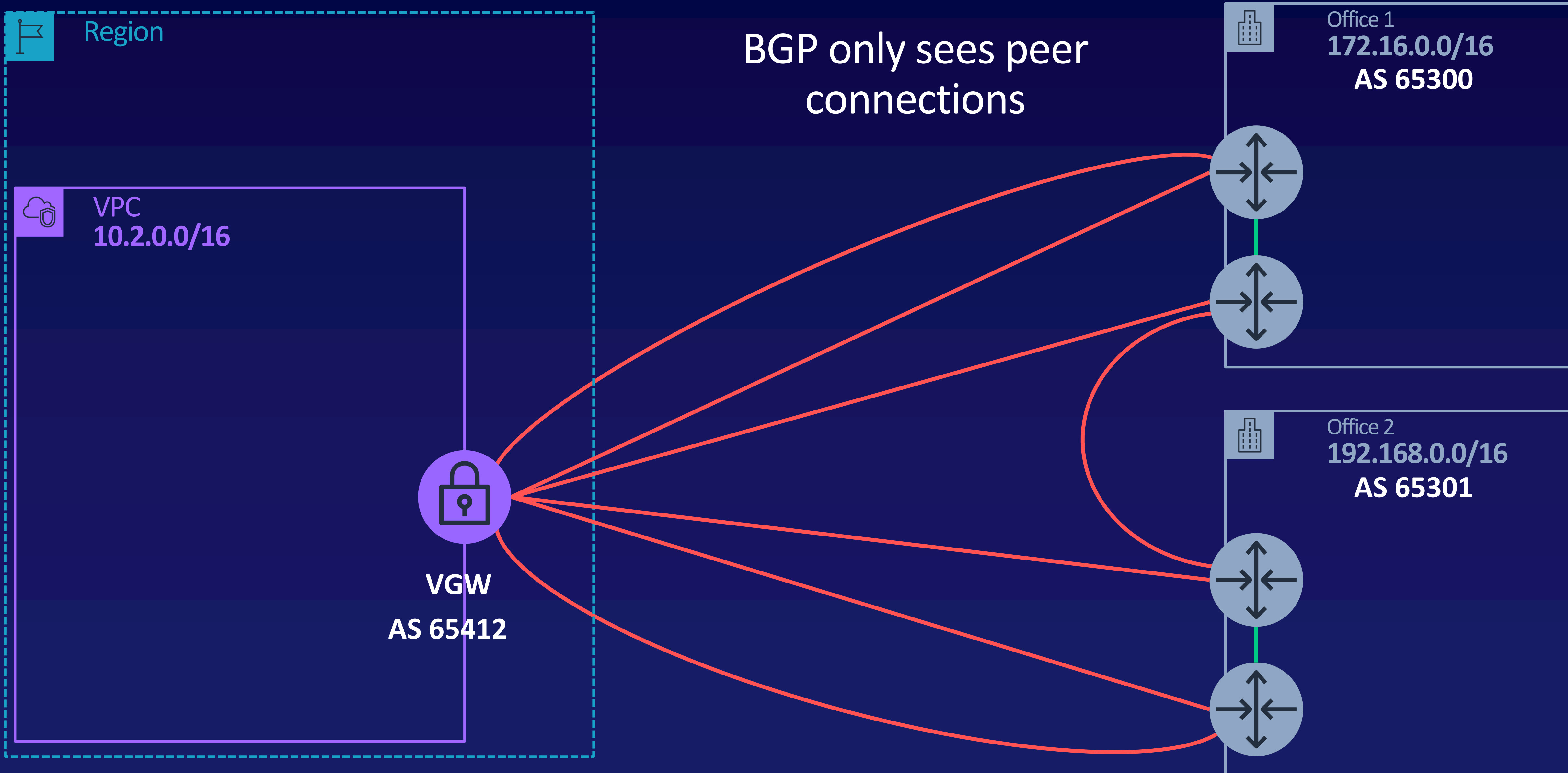
Global AS count
over 63,000 – Jan '19

BGP Peering Map
By iTransformers

AS Recap and BGP Peers



AS Recap and BGP Peers



Fast Takeaways

BGP allows different autonomous systems to share network route information with each other.

BGP peering and network advertisement must be manually configured.

BGP does not care how two peers are physically connected.